

LANGSTON BLACK

REAL ESTATE, INC.

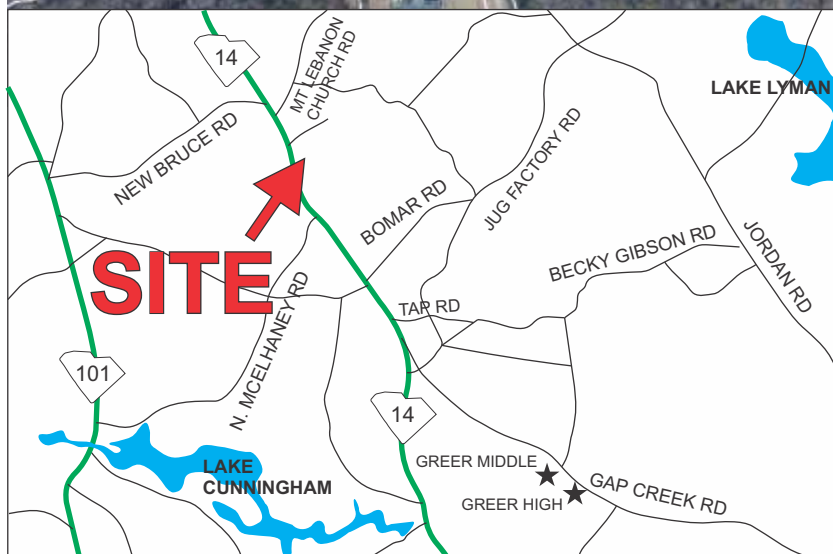
LAND FOR SALE

3682 NORTH HWY 14, GREER

26+- ACRE PARCEL

SITE

\$1,400,000



- HOUSE ON PROPERTY
- PUBLIC WATER AVAILABLE
- UNZONED IN GREENVILLE COUNTY
- TAX MAP 0631.07-01-002.00, 002.09 & 002.06

FOR MORE INFORMATION CONTACT
MICHAEL WOOD AT 864-325-1501
mwood@langston-black.com

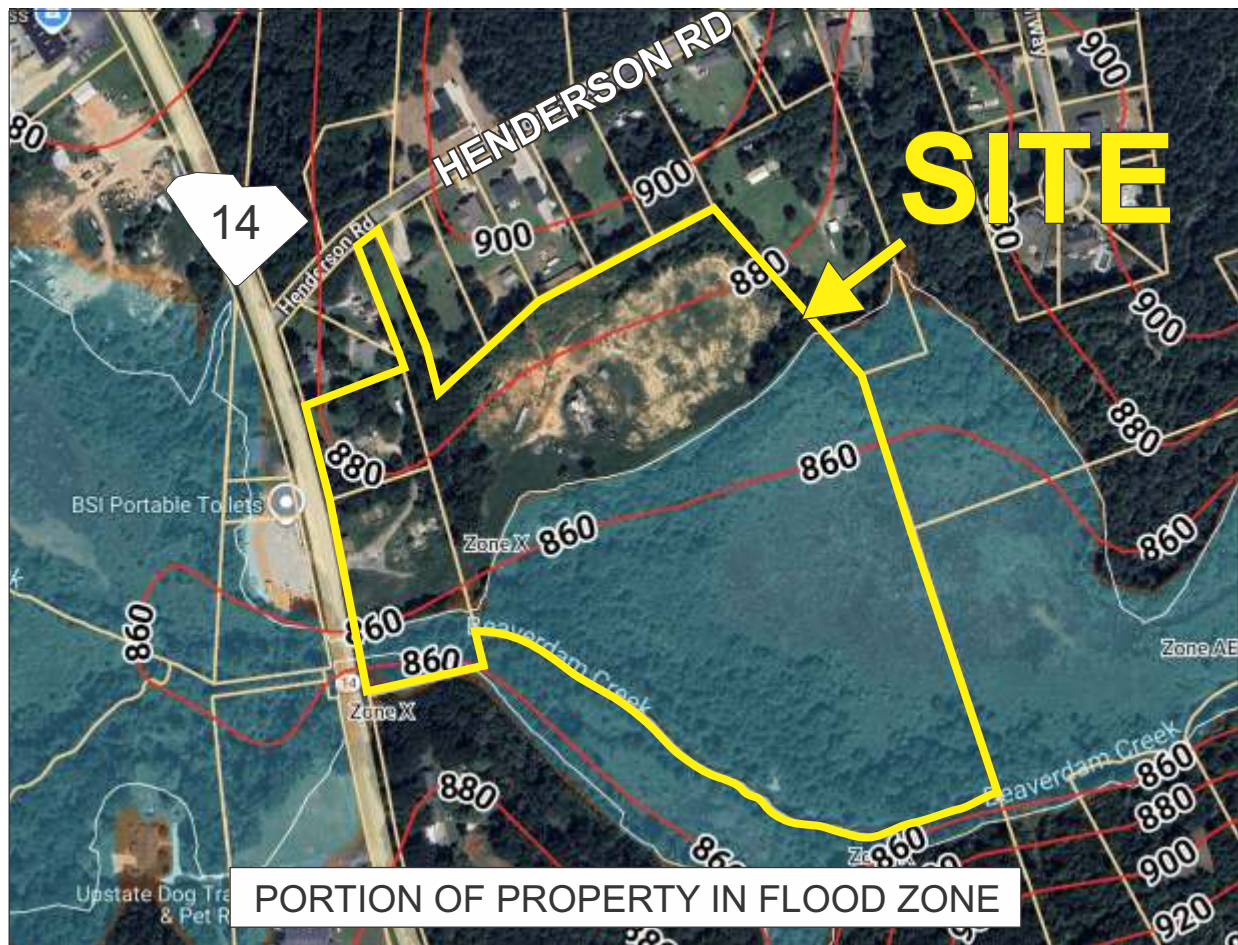
LANGSTON BLACK
REAL ESTATE, INC.

P.O. BOX 2167
GREER, S.C. 29652
BUS: 864-848-9070

025

www.langston-black.com

Every effort has been made to ensure the accuracy of the enclosed data, but we assume no responsibility for errors. All conditions and pricing subject to change without notice.
(LANGSTON-BLACK SITE #025)





Three parcels totaling 26+- acres with approximately 600 feet of frontage on N S Hwy 14 and bordered by Beaverdam Creek, just 5+- miles from Greer's rapidly growing downtown. Recognized as one of South Carolina's fastest growing cities, Greer has experienced rapid residential and commercial growth fueled by its proximity to BMW Manufacturing, Greenville Spartanburg Airport (GSP) and the expanding I-85 corridor. Previously used for commercial purposes the property is unzoned in Greenville County, providing uncommon flexibility for a wide variety of residential or commercial uses. City water is available and the property includes an existing 1,854+- sf home that is currently leased.