

FOR LEASE

CLOSE TO GREENVILLE MEMORIAL HOSPITAL

1011 GROVE ROAD, BUILDING B, GREENVILLE

12,000+- SF TWO STORY BUILDING



OFFICES ON MAIN FLOOR WITH
WORK / STORAGE AREAS ON
LOWER LEVEL WITH DOCK
HIGH ACCESS AND PARKING LOT



LEASE RATE: \$12.20/SF NNN
NNN ESTIMATED AT \$2.00/SF

FOR MORE INFORMATION CONTACT
CHUCK LANGSTON AT 864-230-4302
clangston@langston-black.com

Langston Black
REAL ESTATE, INC.

P.O. BOX 2167
GREER, S.C. 29652
BUS: 864-848-9070

417
B

www.langston-black.com



Main level

RECEPTION AREA WITH DESK, LOBBY AND RESTROOM
THREE OPEN AREAS SUITABLE FOR CUBICLES OR FILES

- (1) 19.7' x 22.6' OPEN AREA
- (2) 35.3' x 27.1' OPEN AREA
- (3) 40.9' x 20.2' OPEN AREA

8 OFFICES

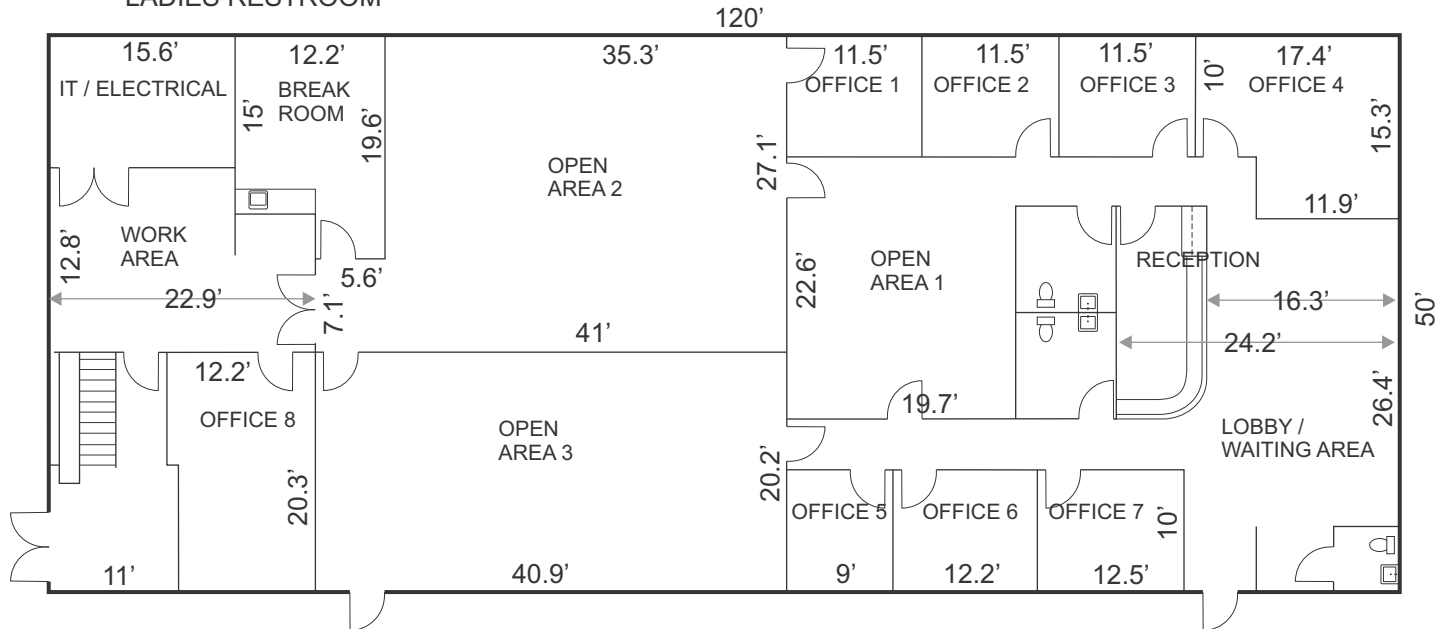
BREAK ROOM

WORK AREA

IT/ELECTRICAL ROOM

MEN'S RESTROOM

LADIES RESTROOM



Lower level

LOWER LEVEL:

OFFICE

WORK AREA

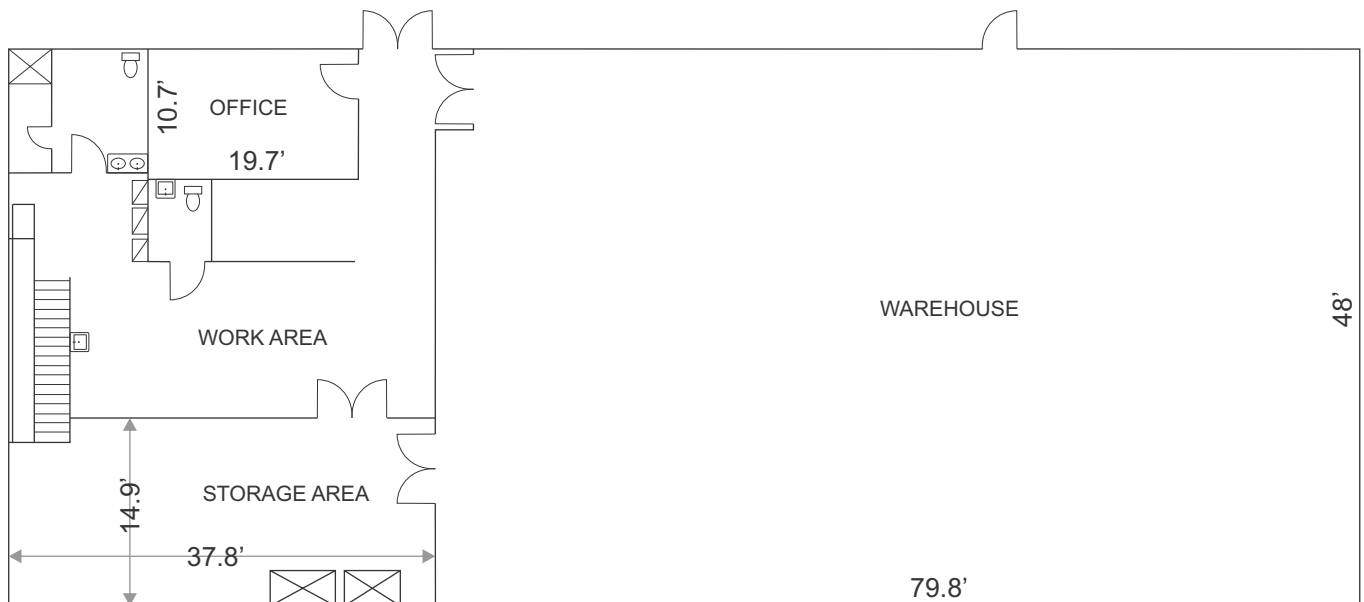
STORAGE AREA

WAREHOUSE AREA

DOCK HIGH DOUBLE DOORS

DOORS OPENING ONTO LARGE PARKING AREA

- TAX MAP 0100.00-01-008.00
- ZONED GREENVILLE COUNTY C2



MAIN LEVEL FRONT ENTRANCE



REAR OF BUILDING



DOCK HIGH ACCESS



LEFT END OF BUILDING



RECEPTION AREA



CORNER OFFICE



OPEN AREA #1



OPEN AREA #2



OPEN AREA #3



MAIN LEVEL - WORK AREA



STAIRCASE WITH CONVEYOR BELT



LOWER LEVEL - WORK AREA



LOWER LEVEL - STORAGE AREA



LOWER LEVEL - WORK AREA



LOWER LEVEL - OFFICE



LOWER LEVEL - WAREHOUSE

