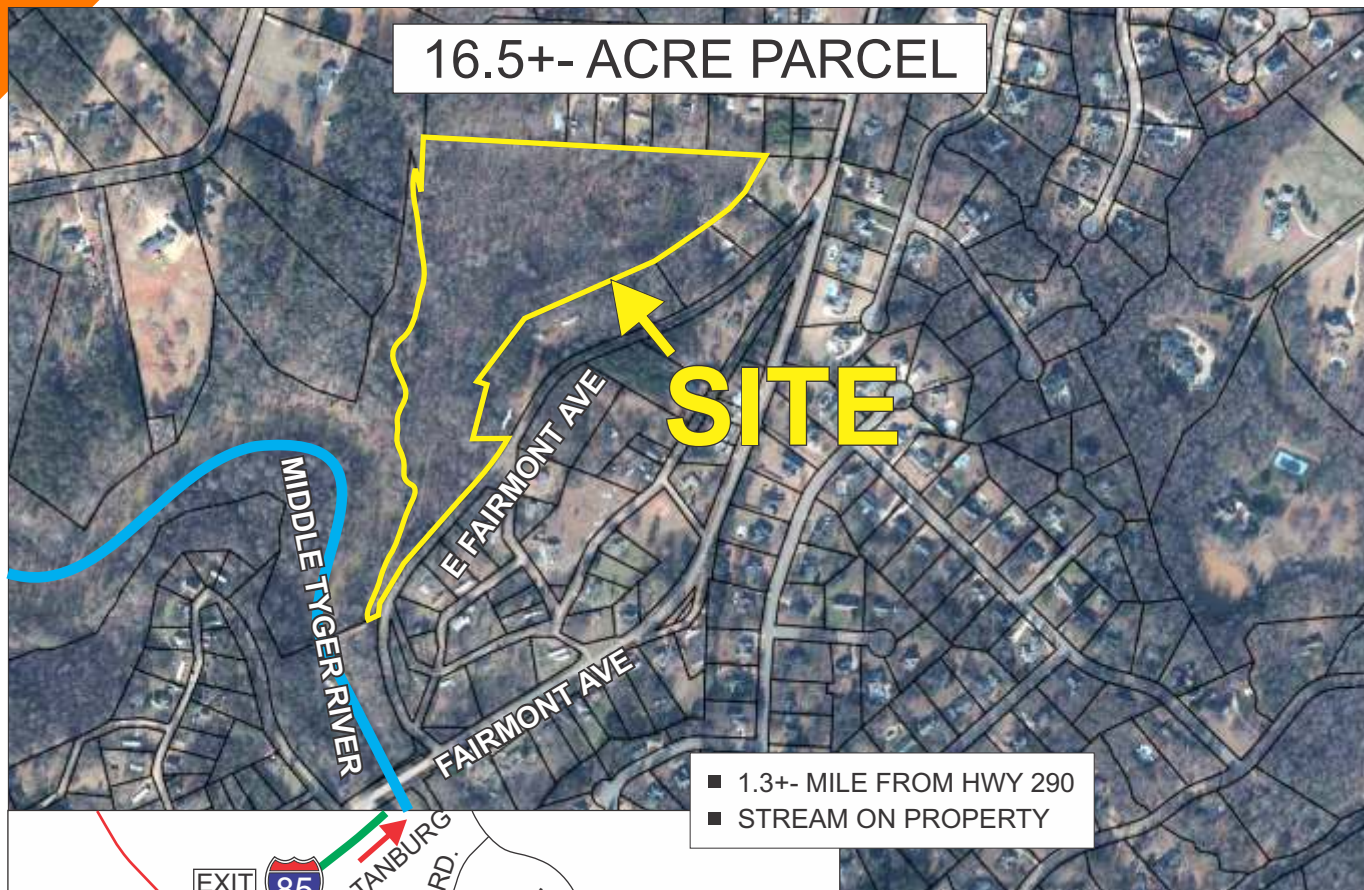
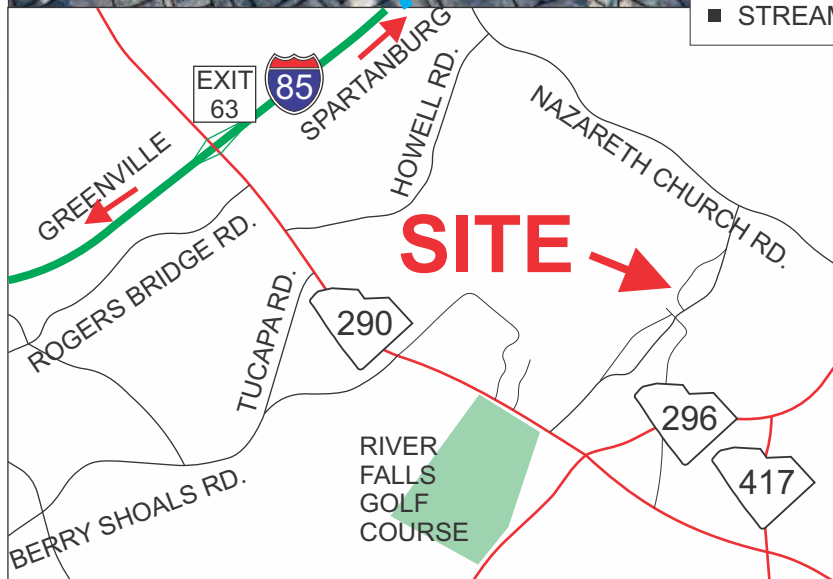


EAST FAIRMONT AVENUE, SPARTANBURG

16.5+- ACRE PARCEL



- 1.3+- MILE FROM HWY 290
- STREAM ON PROPERTY



UNZONED IN SPARTANBURG COUNTY
TAX MAP 5-27-00-088.00

\$1,000,000

FOR MORE INFORMATION CONTACT
MICHAEL WOOD AT 864-325-1501
mwood@langston-black.com

Langston Black
REAL ESTATE, INC.

P.O. BOX 2167
GREER, S.C. 29652
BUS: 864-848-9070

015

www.langston-black.com



16.5 wooded acres located on E Fairmont Avenue in unincorporated Spartanburg County! 1.2+- Miles to E Main St., Duncan, SC. This beautiful, gently sloping property offers privacy, mature hardwoods, multiple potential homesites, and gentle flowing stream. Whether you're looking to build a private estate or invest in future growth, this versatile parcel has immense potential. Access road in place, No HOA, Zoned Spartanburg County PZO with convenient access to downtown Spartanburg, I-85, schools, and shopping. Don't miss your chance to secure a large tract of land in this rapidly growing area. Contact listing agent to view this property.

