

5206 HWY 101 S, WOODRUFF

2.3+- ACRE PARCEL

2024 HWY 101 S  
TRAFFIC COUNT:  
13,500 VPD

SMALL OFFICE SHED  
WITH POWER

PUBLIC WATER  
METER INSTALLED.  
NO SEPTIC SYSTEM

- UNZONED IN SPARTANBURG COUNTY
- TAX MAP 4-18-00-024.02
- GAS LINE EASEMENT ON PROPERTY

BELLVIEW  
BAPTIST  
CHURCH

COUNTRY  
LAWN &  
TRACTOR

**SITE**

**\$425,000**

FOR MORE INFORMATION CONTACT  
RICK HAMMETT AT 864-313-9507  
rhammett@langston-black.com

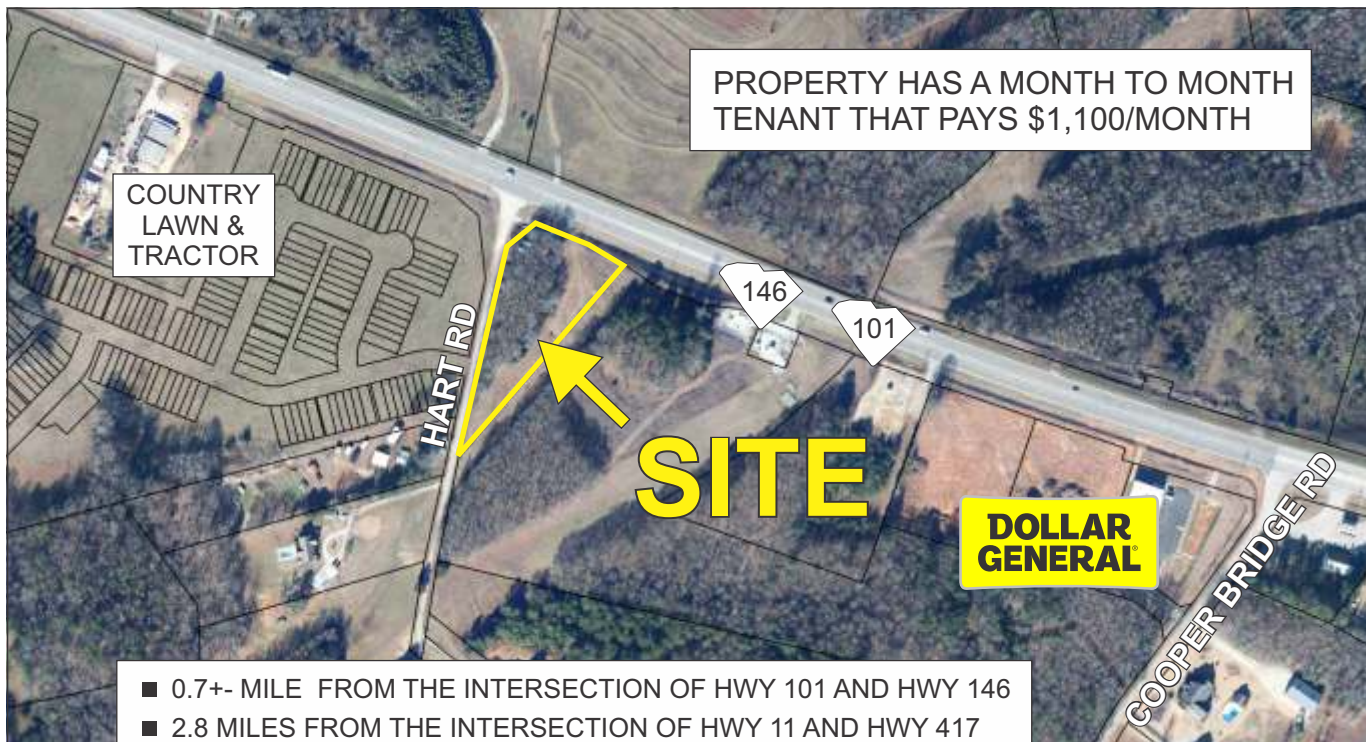
**Langston Black**  
REAL ESTATE, INC.

P.O. BOX 2167  
GREER, S.C. 29652  
BUS: 864-848-9070

010

[www.langston-black.com](http://www.langston-black.com)





- 0.7+- MILE FROM THE INTERSECTION OF HWY 101 AND HWY 146
- 2.8 MILES FROM THE INTERSECTION OF HWY 11 AND HWY 417
- 3+- MILES FROM NEW BMW BATTERY PLANT
- 3.5+- MILES FROM MICHELIN TIRE DISTRIBUTION CENTER
- 5+- MILES FROM DOWNTOWN WOODRUFF



