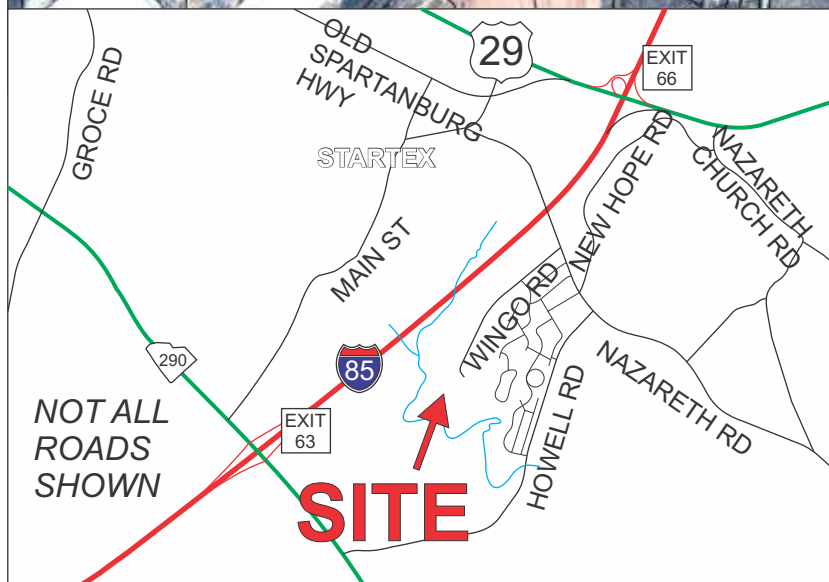
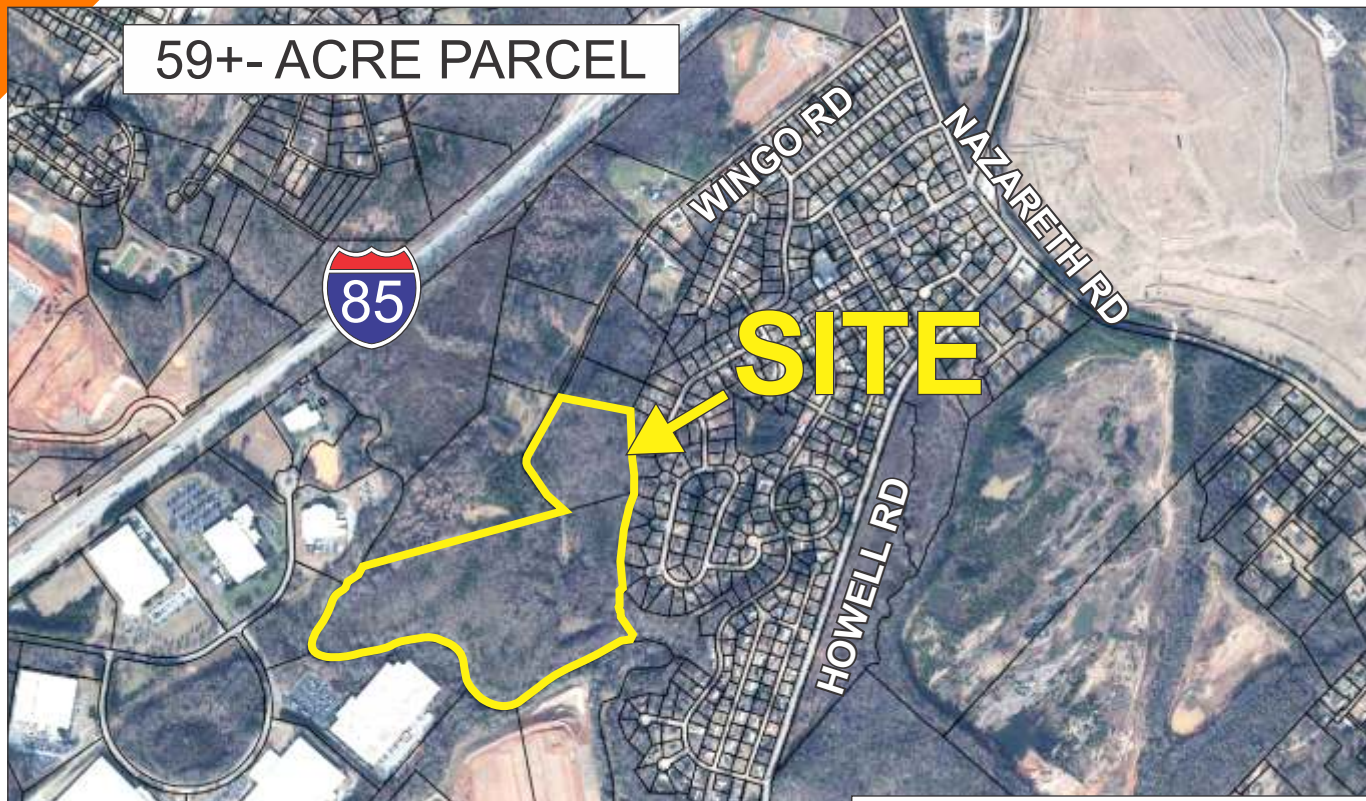


### WINGO ROAD, WELLFORD

59+- ACRE PARCEL



- UNZONED IN SPARTANBURG COUNTY
- TAX MAP 5-26-00-014.00 & 029.00

**SALES PRICE: ~~\$35,000/AC.~~**  
**REDUCED TO ~~\$32,000/AC.~~**

FOR MORE INFORMATION CONTACT  
MICHAEL WOOD AT 864-325-1501  
mwood@langston-black.com

**Langston Black**  
REAL ESTATE, INC.

P.O. BOX 2167  
GREER, S.C. 29652  
BUS: 864-848-9070

002

[www.langston-black.com](http://www.langston-black.com)









Beautiful 59.05+- acres of unzoned Spartanburg County land located less than 1 mile from I-85 in Wellford, SC. Has approximately 3,400' of frontage on the Middle Tyger River. This property has huge potential for industrial development, residential development or a great place to create your private homestead / family compound. Two separate parcel numbers: 5-26-00-014.00 (47.3+- acres) and 5-21-00-029.00 (11.75+- acres). This property is behind a locked gate. Listing agent is required to be present to provide access. Call to schedule a showing.