

800 CHARISMA DRIVE, SPARTANBURG

6.76+- ACRE PARCEL

GREAT VISIBILITY FROM BUS I-85



SITE

FRONTAGE ON CHARISMA DRIVE & LONE OAK ROAD

MULTIPLE PROPERTY OWNERS ARE LICENSED REAL ESTATE AGENTS

- TAX MAP 6-08-14-168.00
- ALL UTILITIES AVAILABLE
- NOT IN SPARTANBURG CITY LIMITS

\$2,200,000

FOR MORE INFORMATION CONTACT
OWNER/AGENT CHUCK LANGSTON
AT 864-230-4302
clangston@langston-black.com

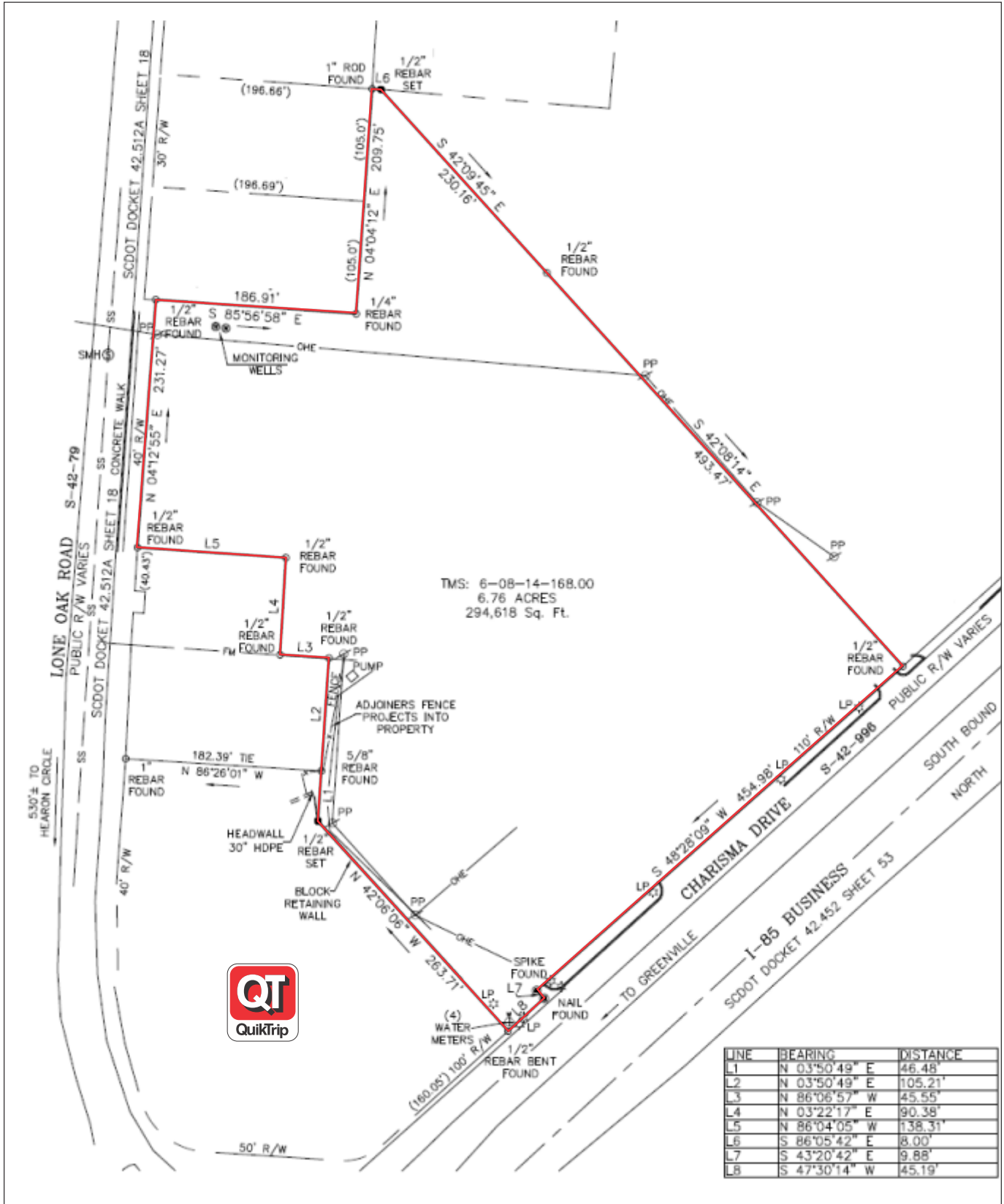
LANGSTON BLACK
REAL ESTATE, INC.

P.O. BOX 2167
GREER, S.C. 29652
BUS: 864-848-9070

012

www.langston-black.com





SURVEY DONE BY PALMETTO CORP
 LAND SURVEY DISISION
 DATE OF SURVEY: 04/30/2024

