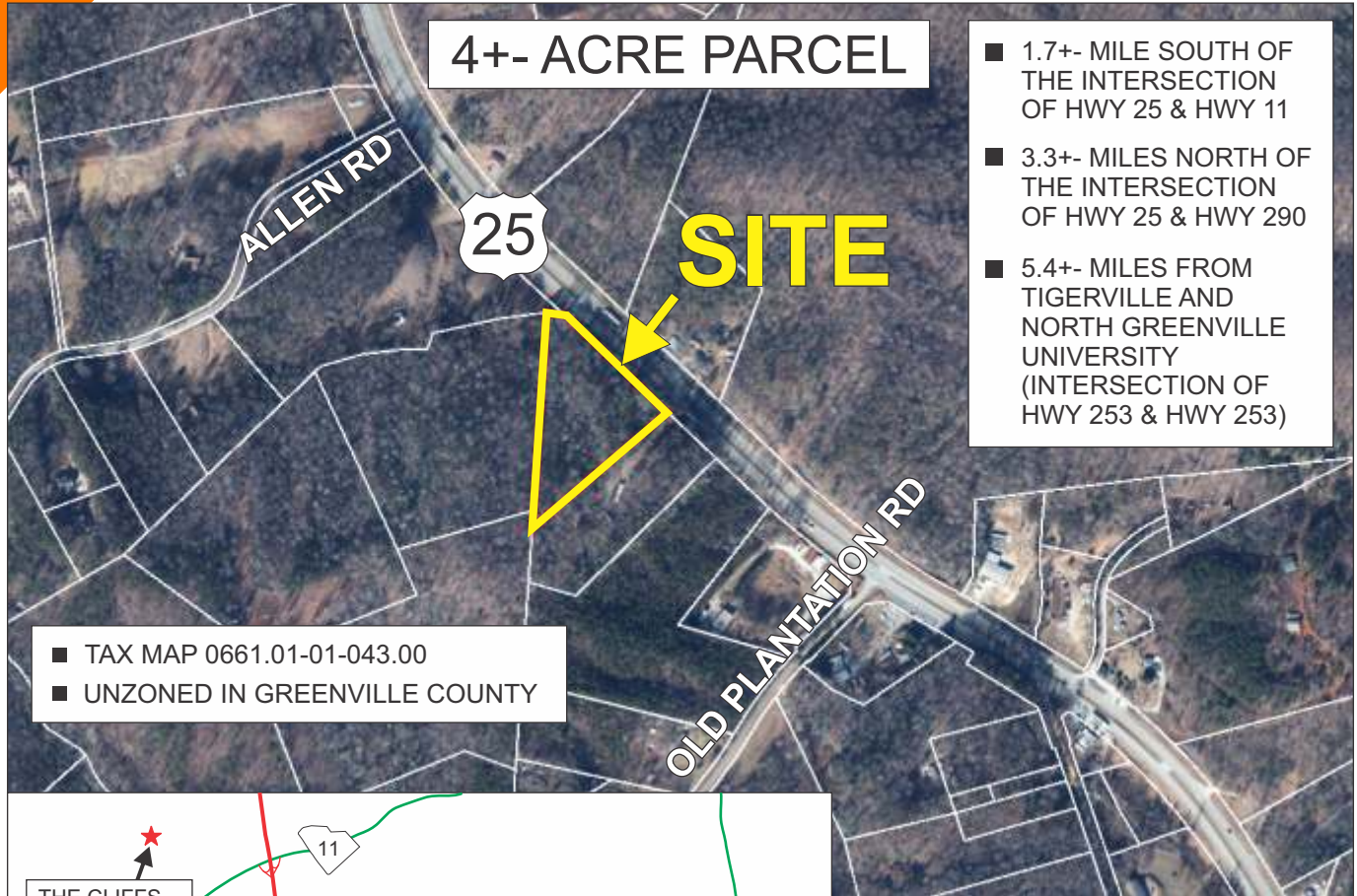


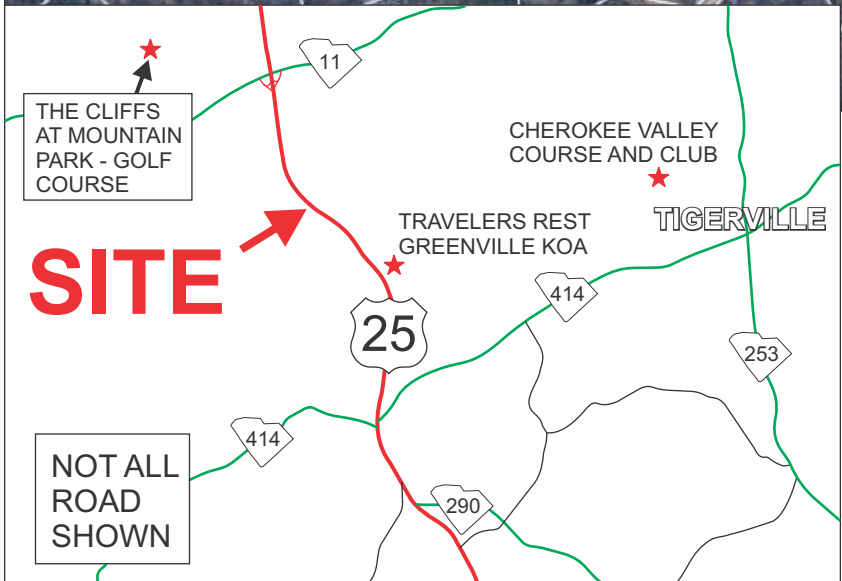
### HWY 25 NORTH, TRAVELERS REST

4+- ACRE PARCEL



- 1.7+- MILE SOUTH OF THE INTERSECTION OF HWY 25 & HWY 11
- 3.3+- MILES NORTH OF THE INTERSECTION OF HWY 25 & HWY 290
- 5.4+- MILES FROM TIGERVILLE AND NORTH GREENVILLE UNIVERSITY (INTERSECTION OF HWY 253 & HWY 253)

- TAX MAP 0661.01-01-043.00
- UNZONED IN GREENVILLE COUNTY



**\$130,000**

FOR MORE INFORMATION CONTACT  
MICHAEL WOOD AT 864-325-1501  
mwood@langston-black.com

**LANGSTON BLACK**  
REAL ESTATE, INC.

P.O. BOX 2167  
GREER, S.C. 29652  
BUS: 864-848-9070

041

[www.langston-black.com](http://www.langston-black.com)

Every effort has been made to ensure the accuracy of the enclosed data, but we assume no responsibility for errors. All conditions and pricing subject to change without notice.  
(LANGSTON-BLACK SITE #041)



