

3085 SOUTH HWY 14, GREER

6.95+- ACRE PARCEL



- REAR PROPERTY LINE IS ALONG THE ENOREE RIVER
- 3,400+- HOUSE, TWO CAR DETACHED GARAGE AND BARN ON PROPERTY

TAX MAP 0530.04-01-004.02

\$1,700,000

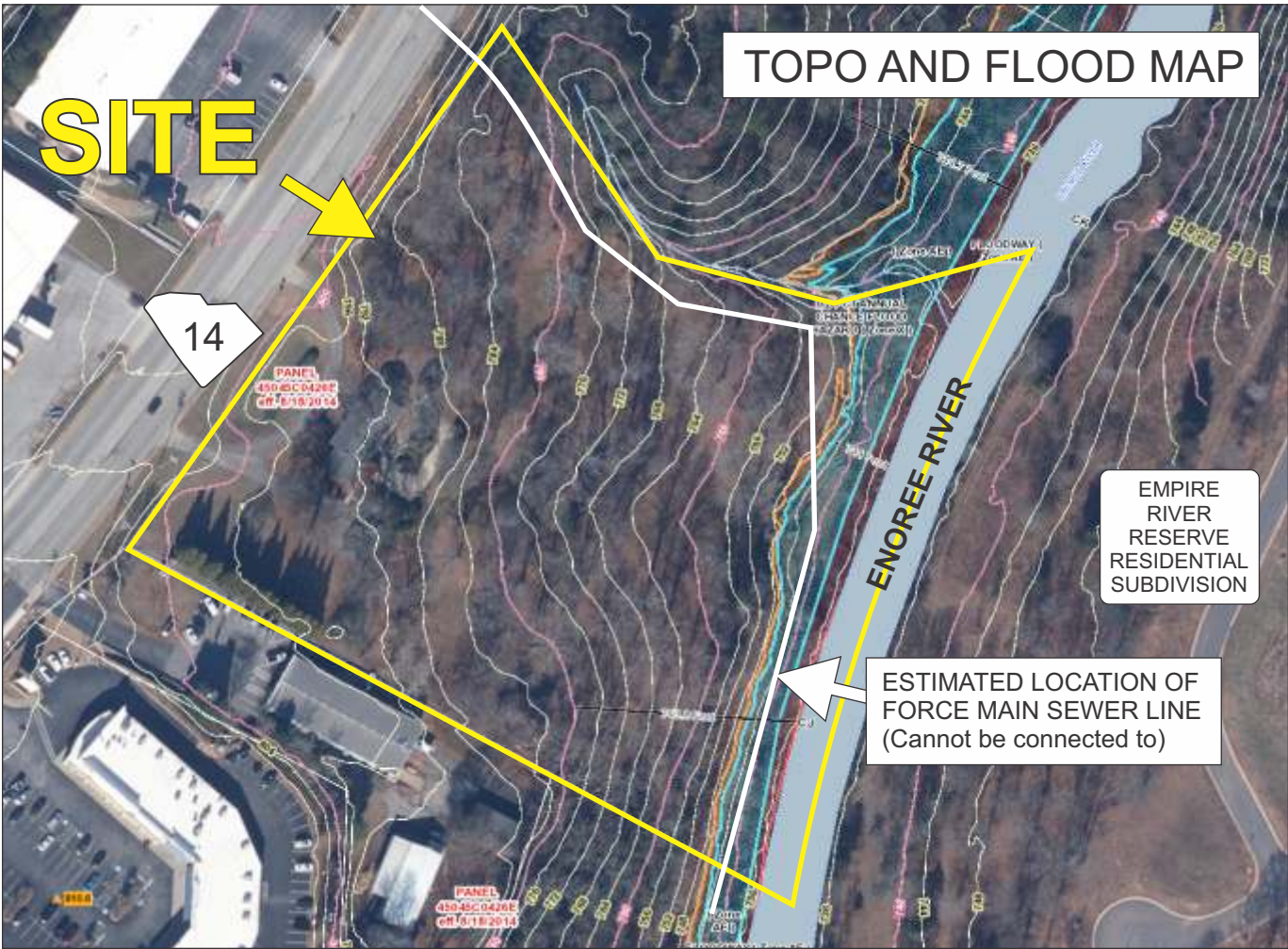
FOR MORE INFORMATION CONTACT
CHUCK LANGSTON AT 864-230-4302
clangston@langston-black.com

LANGSTON BLACK
REAL ESTATE, INC.

P.O. BOX 2167
GREER, S.C. 29652
BUS: 864-848-9070

023

www.langston-black.com





EXIT
56

85

GSP AIRPORT
ROGER MILLIKEN FIELD

CITGO

OLD HWY 14

14

Spartanburg Regional
HOSPITAL

Pelham
Medical Center

Gibbs Cancer Center
& Research Institute

BANK

DOLLAR
GENERAL

MEDICAL
OFFICES

SHERWIN
WILLIAMS

PELHAM
MILL PARK

FIRE
STATION

EMPIRE RIVER
RESERVE
RESIDENTIAL
SUBDIVISION

BATESVILLE RD

BAUSCH+LOMB

PELHAM RD

Haas
FAMILY GOLF

SPINX

SITE

