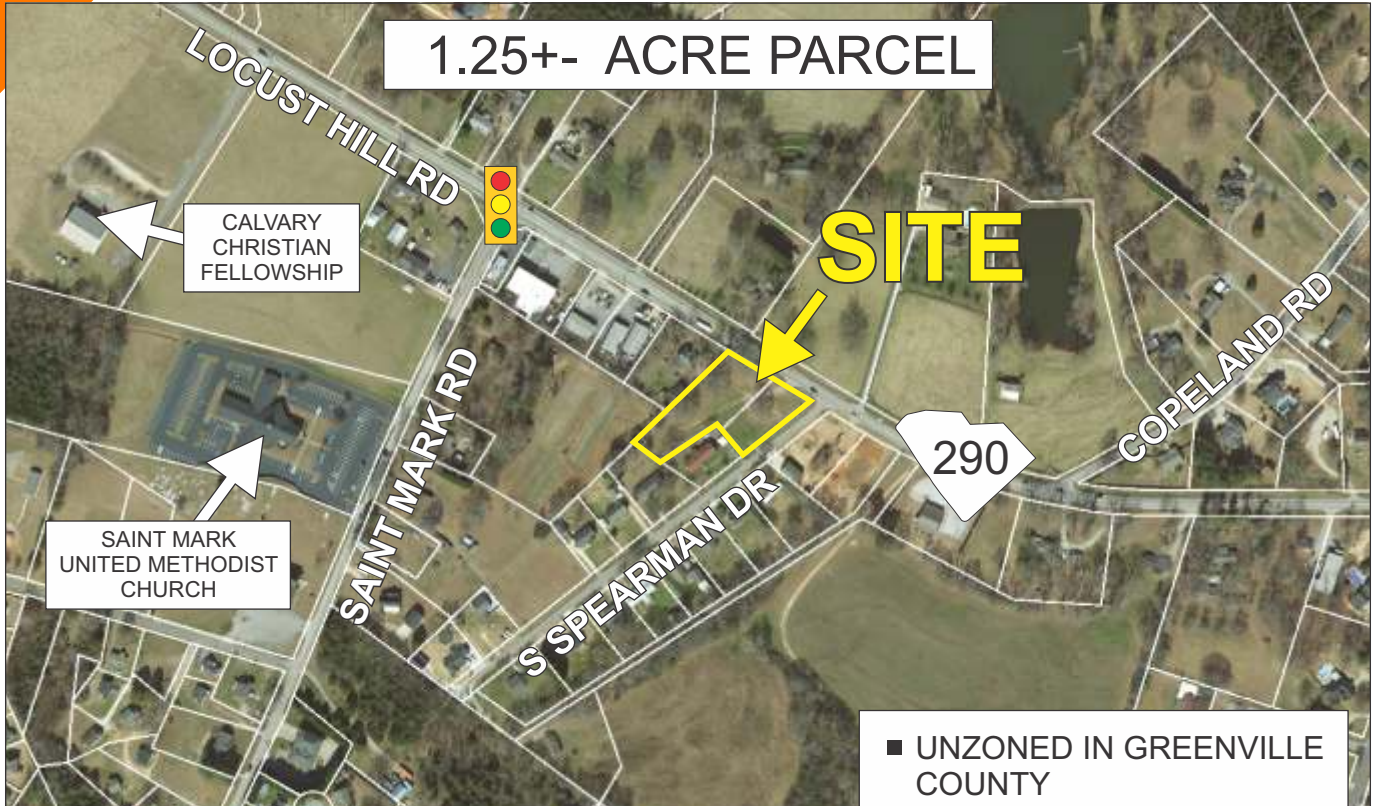


LOCUST HILL RD (HWY 290) & S SPEARMAN DR, GREER

1.25+- ACRE PARCEL



- UNZONED IN GREENVILLE COUNTY
- PUBLIC WATER AVAILABLE
- TAX MAP T009.01-01-043.00 & 044.00

\$320,000

FOR MORE INFORMATION CONTACT
GLENN YOUNG AT 864-384-4999
gyoung@langston-black.com

LANGSTON BLACK

REAL ESTATE, INC.

P.O. BOX 2167
GREER, S.C. 29652
BUS: 864-848-9070

002



www.langston-black.com

