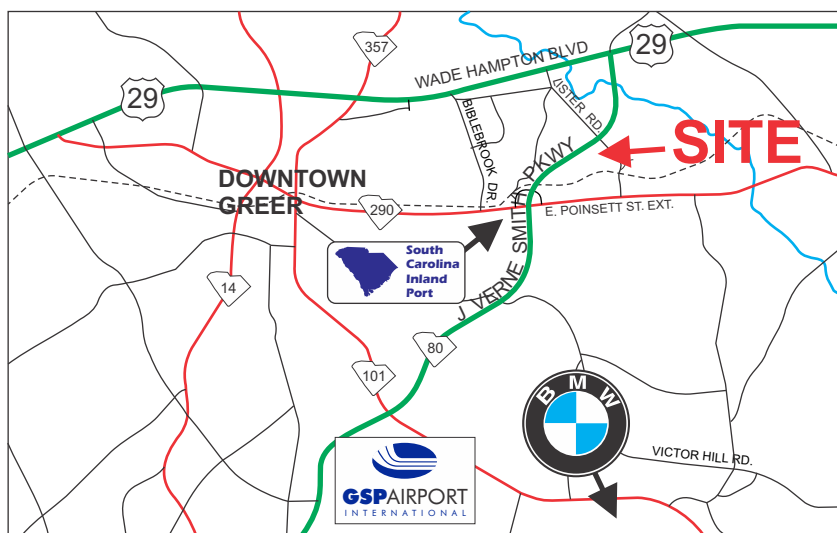
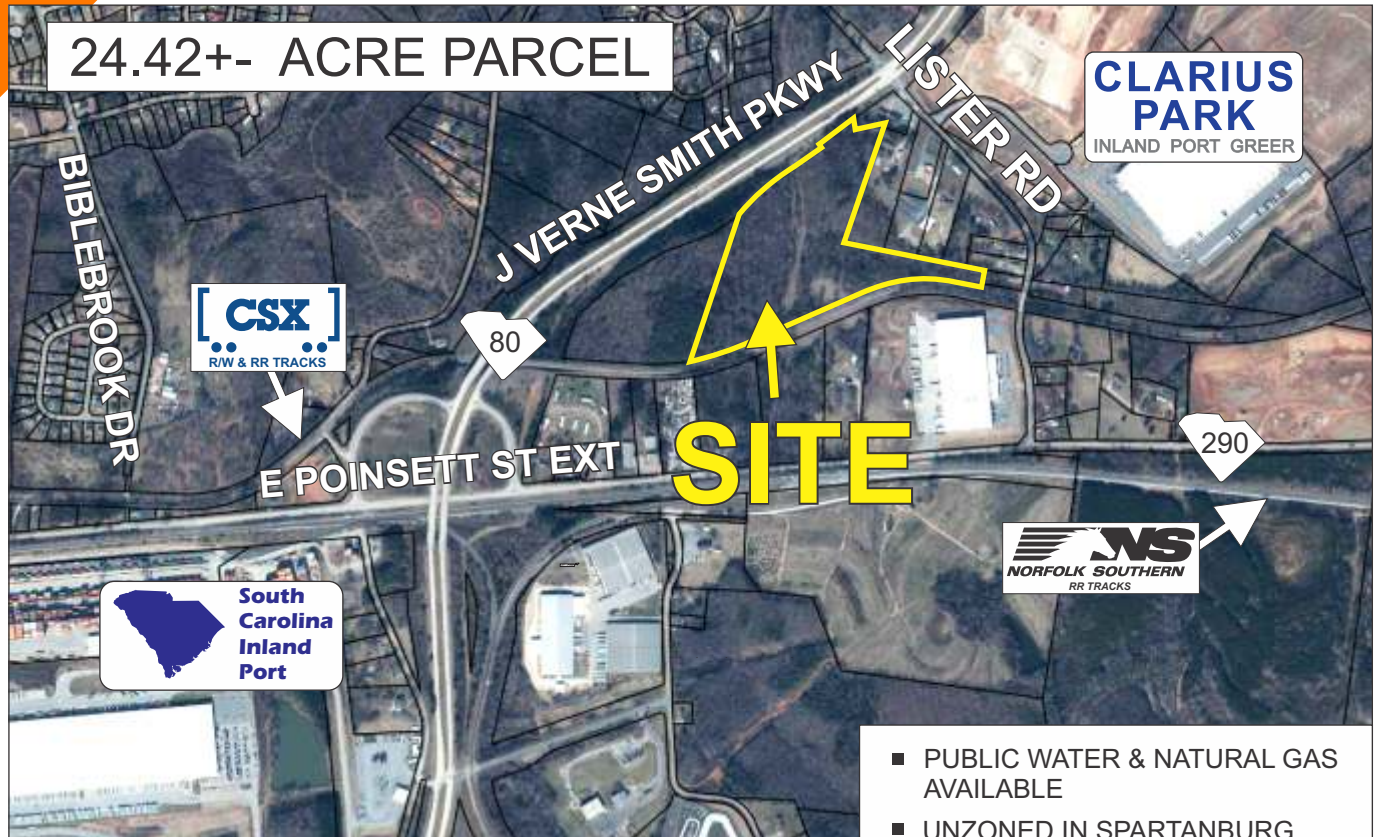


### LISTER ROAD, GREER

24.42+- ACRE PARCEL



- PUBLIC WATER & NATURAL GAS AVAILABLE
- UNZONED IN SPARTANBURG COUNTY
- TAX MAP 5-14-00-033.00
- NOT IN GREER CITY LIMITS

**\$50,000/ACRE**

FOR MORE INFORMATION CALL  
TIM ALLENDER AT 864-884-2198  
tallender@langston-black.com

**LANGSTON BLACK**  
REAL ESTATE, INC.

P.O. BOX 2167  
GREER, S.C. 29652  
BUS: 864-848-9070

020

[www.langston-black.com](http://www.langston-black.com)





- 1.5+- MILES FROM SC INLAND PORT
- 3.6+- MILES FROM GSP AIRPORT FREIGHT TERMINAL
- 4.8+- MILES FROM TRUCK ENTRANCE TO BMW

