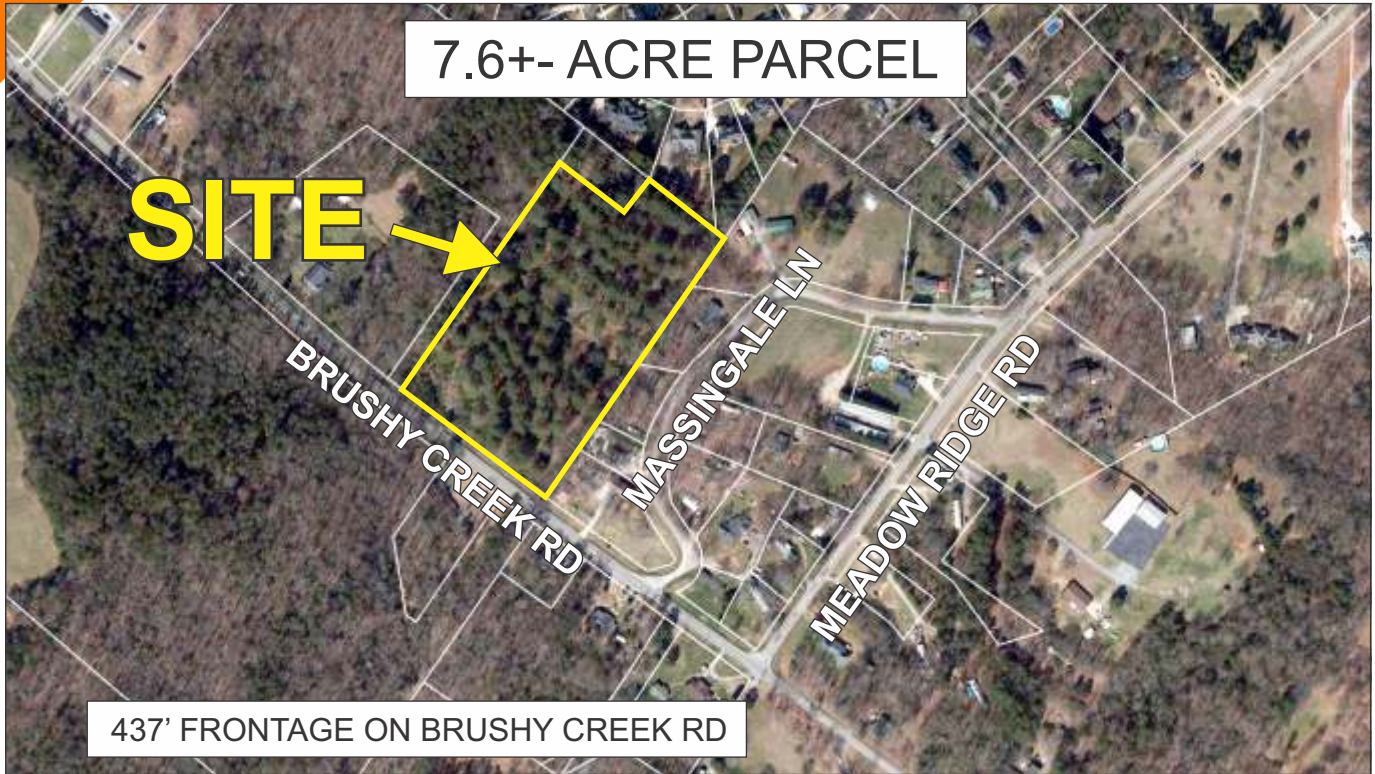


### BRUSHY CREEK ROAD, EASLEY

7.6+- ACRE PARCEL

**SITE** →



437' FRONTAGE ON BRUSHY CREEK RD



- PICKENS COUNTY  
TAX MAP 5037-06-28-6659
- PUBLIC WATER AVAILABLE

## \$650,000

FOR MORE INFORMATION CONTACT  
JIM GRIFFIN AT 864-593-3000  
jgriffin@langston-black.com

**LANGSTON BLACK**  
REAL ESTATE, INC.

P.O. BOX 2167  
GREER, S.C. 29652  
BUS: 864-848-9070

052

[www.langston-black.com](http://www.langston-black.com)



- 3.0+- MILES FROM HWY 123 (HOME DEPOT)
- 3.4+- MILES FROM TRI COUNTY TECHNICAL COLLEGE
- 3.6+- MILES FROM EASLEY TOWN CENTER  
(WALMART, KOHL'S, MARSHALLS, PETSMART,  
ACADEMY SPORTS, SAM'S CLUB)
- 7+- MILES FROM I-85 (EXIT 40)