

OFFICE / RETAIL SPACE FOR LEASE

219 PELHAM ROAD, SUITE B, GREENVILLE SC 29615

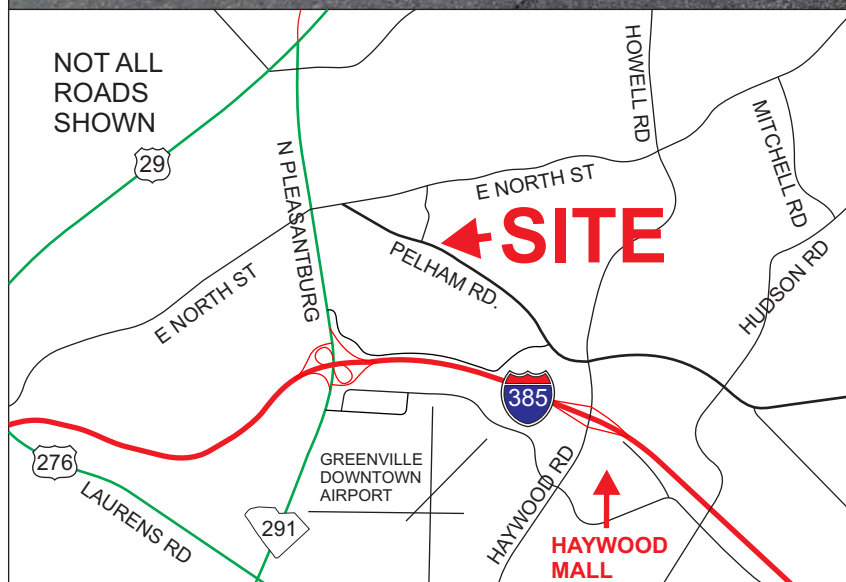
1,550 TO 3,100 SF AVAILABLE



OTHER TENANTS:

- CENTURY 21 / BLACKWELL & CO. REALTY
- TOBACCO & VAPE

- MONUMENT SIGNAGE
- IN FRONT OF PUBLIX
- NEAR INTERSECTION OF PELHAM RD AND E NORTH ST
- GREAT VISIBILITY ON CORNER



LEASE RATE: \$20/SF NNN

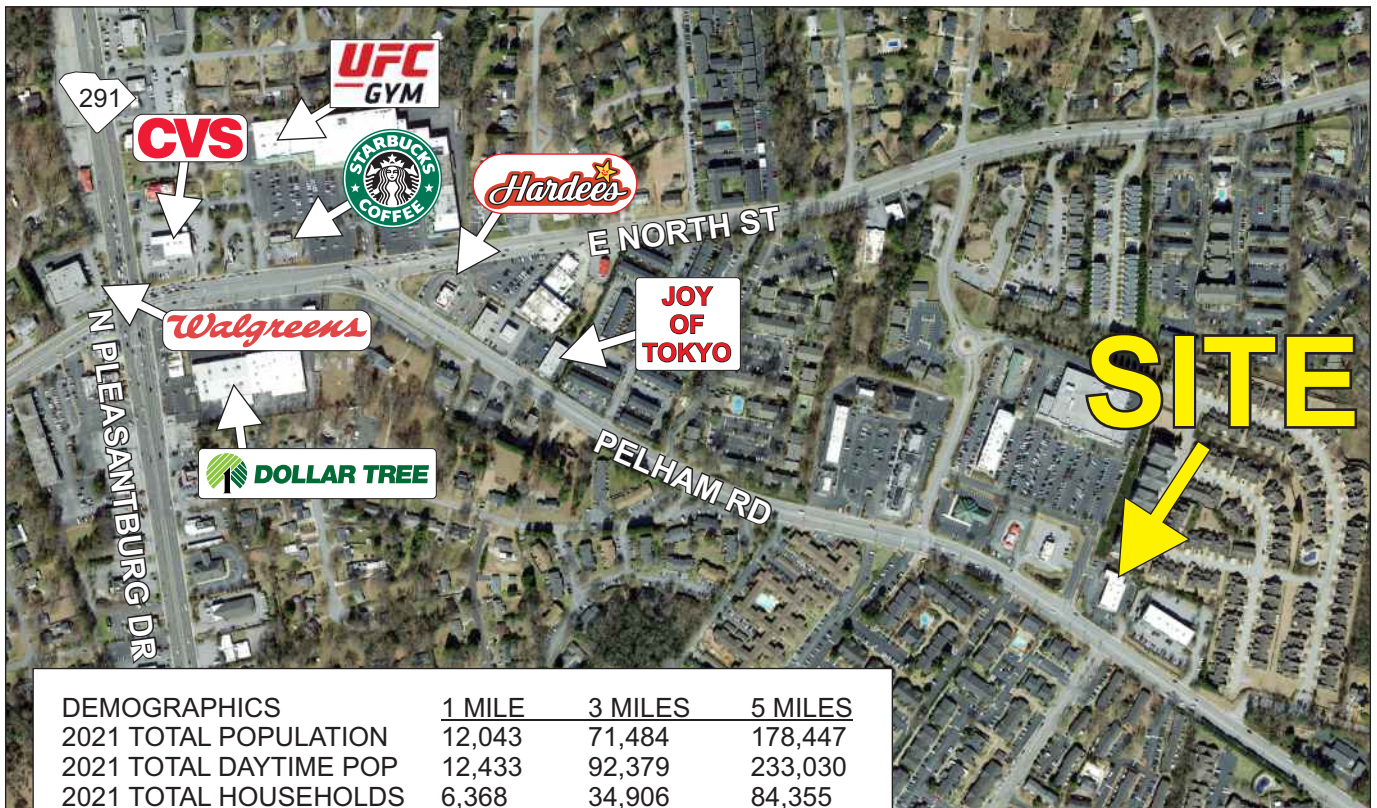
FOR MORE INFORMATION CONTACT
BRAD TOY, CCIM, AT 864-640-7429
btoy@langston-black.com

Langston Black
REAL ESTATE, INC.

P.O. BOX 2167
GREER, S.C. 29652
BUS: 864-848-9070

420

www.langston-black.com

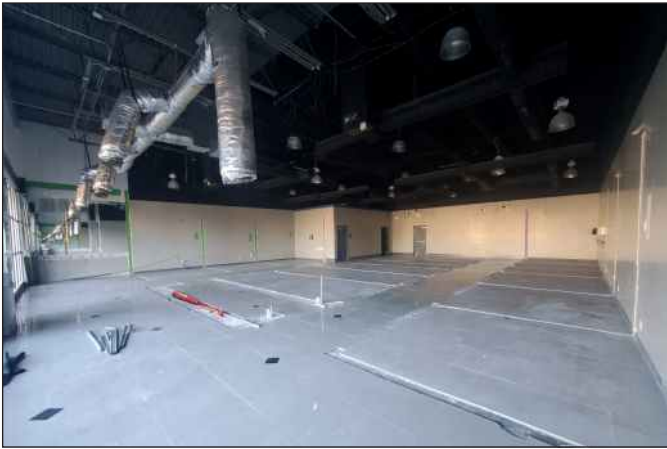


DEMOGRAPHICS	1 MILE	3 MILES	5 MILES
2021 TOTAL POPULATION	12,043	71,484	178,447
2021 TOTAL DAYTIME POP	12,433	92,379	233,030
2021 TOTAL HOUSEHOLDS	6,368	34,906	84,355
2021 MED. HH INCOME	\$50,701	\$57,237	\$59,801
2021 AVG. HH INCOME	\$67,171	\$84,259	\$89,880

TRAFFIC COUNT (PELHAM RD): 17,100 VPD

- ZONED CITY OF GREENVILLE C2
- TAX MAP 0279.00-01-008.03





219 PELHAM ROAD, SUITE B, GREENVILLE SC 29615

