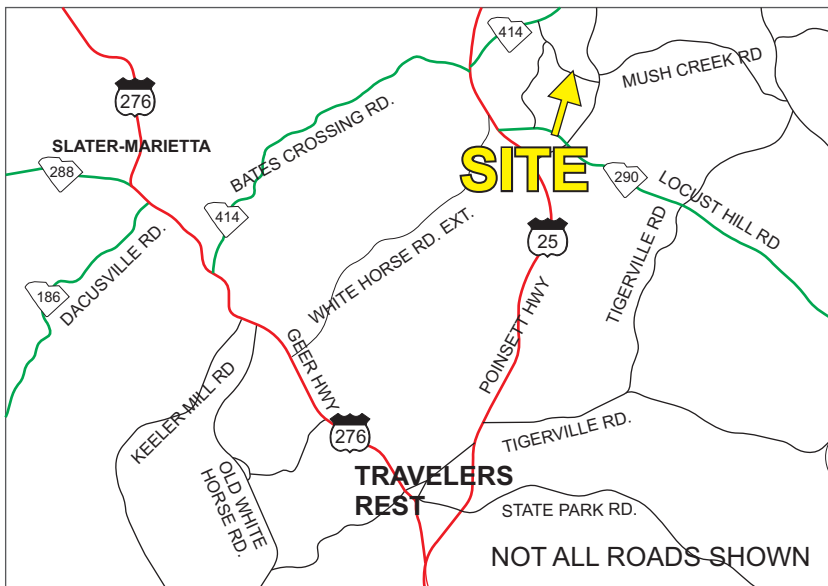
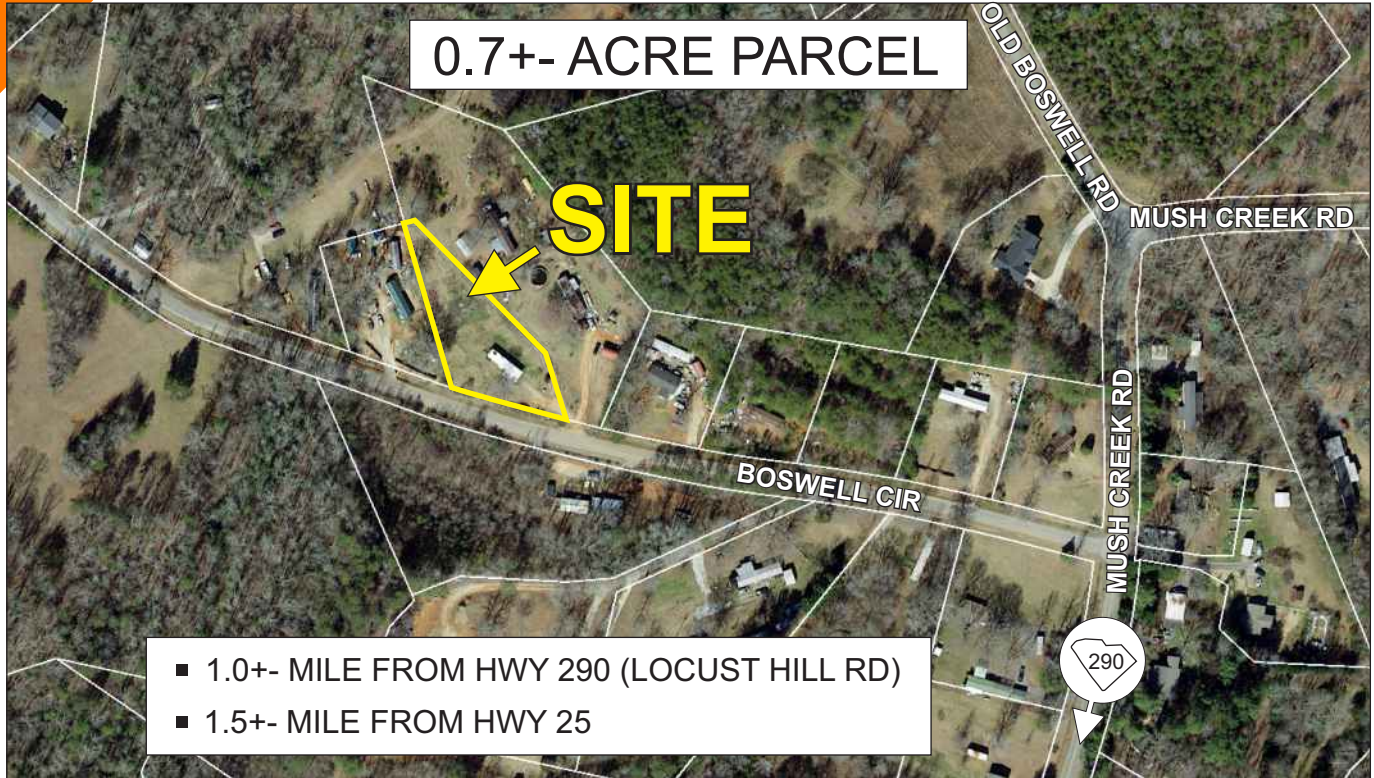


26 BOSWELL CIRCLE, TRAVELERS REST

0.7+- ACRE PARCEL

SITE

- 1.0+- MILE FROM HWY 290 (LOCUST HILL RD)
- 1.5+- MILE FROM HWY 25



- UNZONED IN GREENVILLE COUNTY
- TAX MAP 0655.05-01-009.19
- PUBLIC WATER AVAILABLE

\$32,000

FOR MORE INFORMATION CALL
JOHN DANIEL AT 864-979-3463
jdaniel@langston-black.com

LANGSTON BLACK
REAL ESTATE, INC.

P.O. BOX 2167
GREER, S.C. 29652
BUS: 864-848-9070

023

www.langston-black.com

