

LANGSTON BLACK

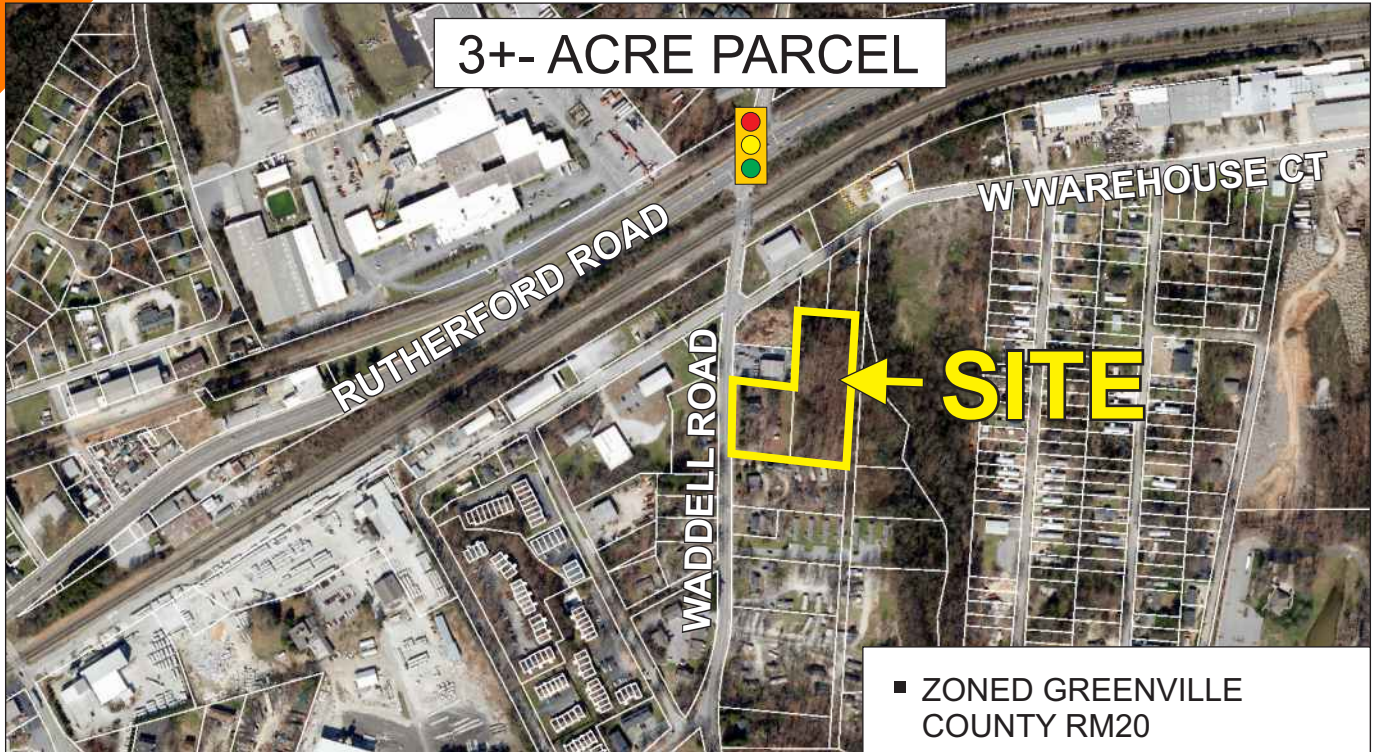
REAL ESTATE, INC.

LAND FOR SALE

JUST OFF OF RUTHERFORD ROAD

410 WADDELL ROAD, TAYLORS

3+ - ACRE PARCEL



- ZONED GREENVILLE COUNTY RM20
- HOUSE ON PROPERTY (NO VALUE)
- TAX MAP P013.00-03-039.00 & 039.01
- ALL UTILITIES AVAILABLE

\$265,000

FOR MORE INFORMATION CALL
TIM ALLENDER AT 864-884-2198
tallender@langston-black.com

LANGSTON BLACK
REAL ESTATE, INC.

P.O. BOX 2167
GREER, S.C. 29652
BUS: 864-848-9070

025



www.langston-black.com

Every effort has been made to ensure the accuracy of the enclosed data, but we assume no responsibility for errors. All conditions and pricing subject to change without notice.
(LANGSTON-BLACK SITE #025)



MEASUREMENTS FROM SURVEY DONE BY SITE DESIGN ON 10/1/2019