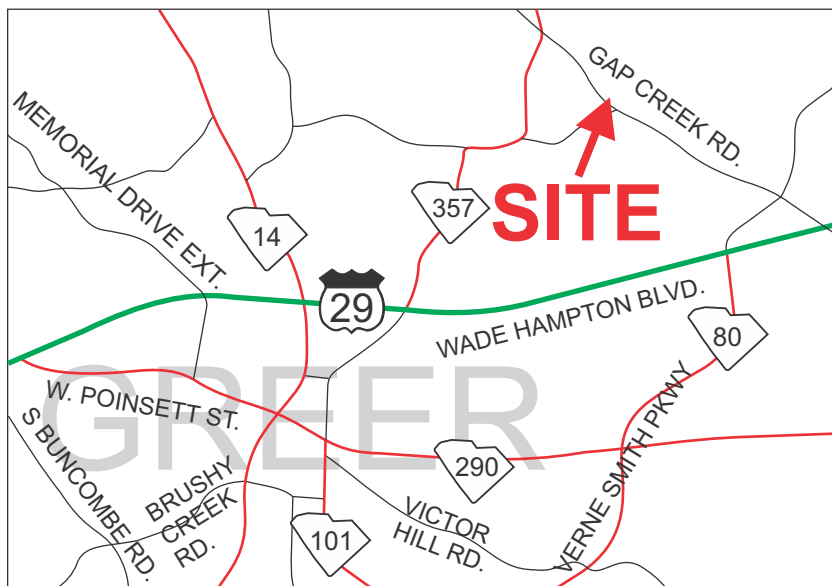
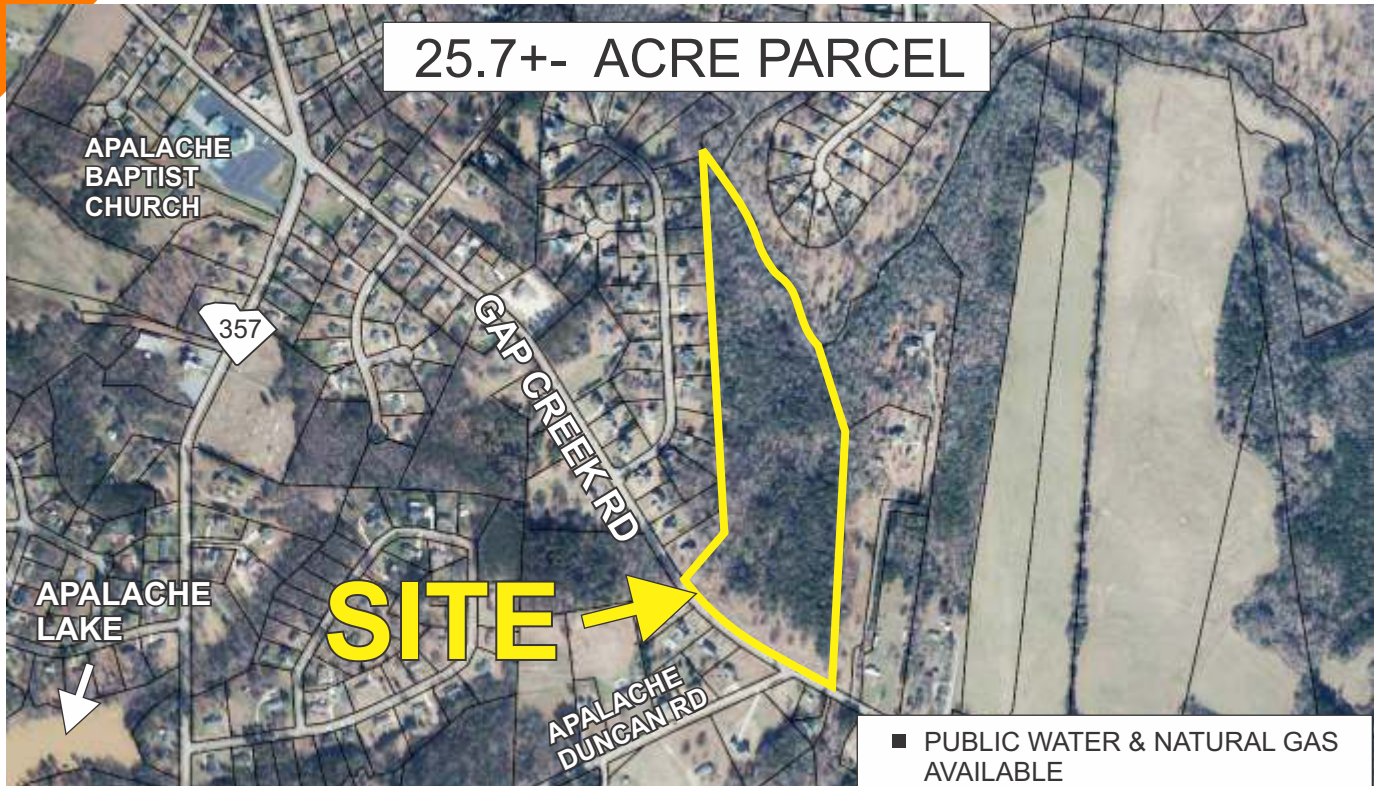


### GAP CREEK ROAD, LYMAN

25.7+- ACRE PARCEL



- PUBLIC WATER & NATURAL GAS AVAILABLE
- TAX MAP 5-09-00-017.00
- UNZONED IN SPARTANBURG COUNTY

## \$29,500/ACRE

FOR MORE INFORMATION CONTACT:

MICHAEL WOOD AT 864-325-1501  
mwood@langston-black.com

CHUCK LANGSTON AT 864-230-4302  
clangston@langston-black.com

**LANGSTON BLACK**  
REAL ESTATE, INC.

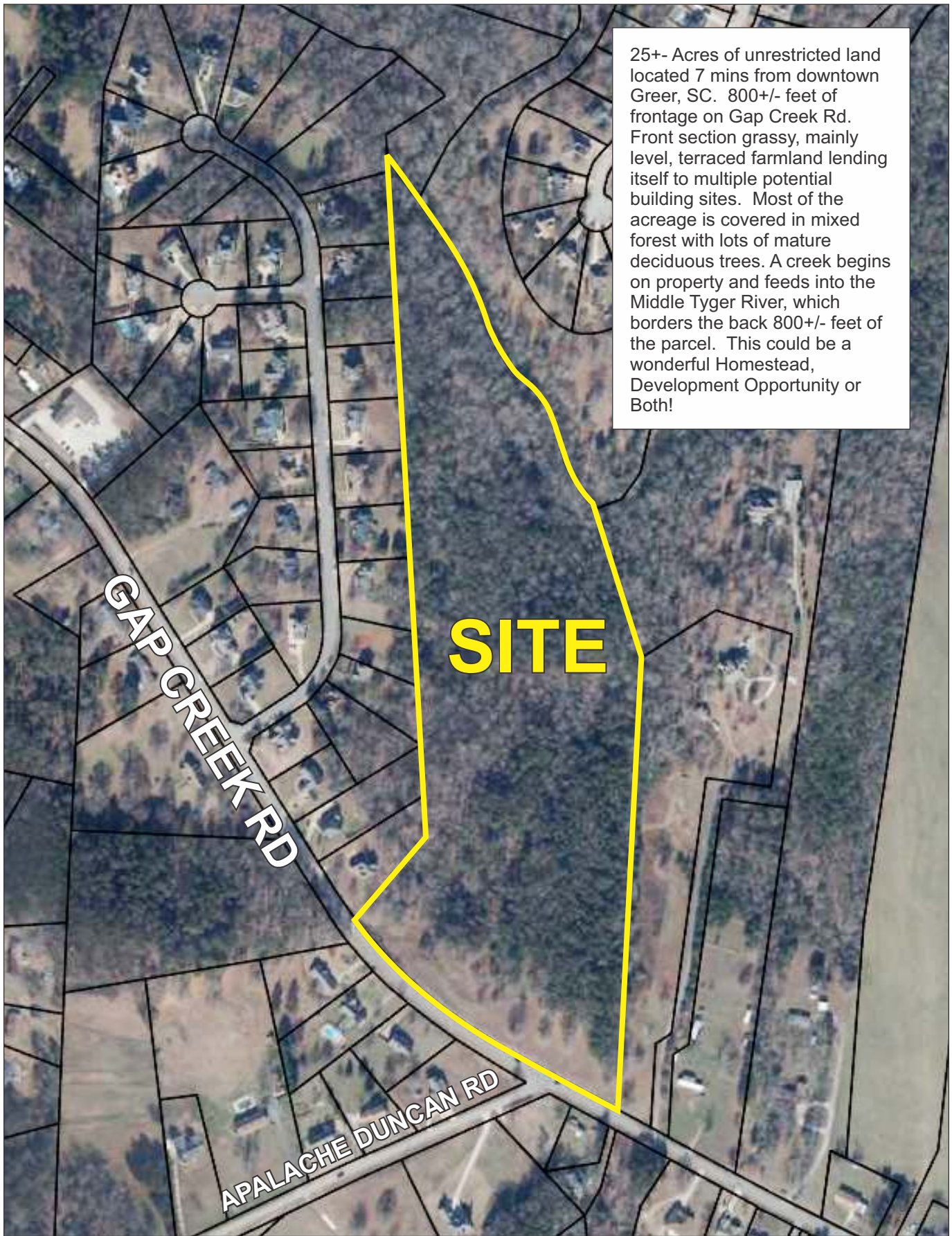
P.O. BOX 2167

GREER, S.C. 29652

BUS: 864-848-9070

017

[www.langston-black.com](http://www.langston-black.com)



25+- Acres of unrestricted land located 7 mins from downtown Greer, SC. 800+/- feet of frontage on Gap Creek Rd. Front section grassy, mainly level, terraced farmland lending itself to multiple potential building sites. Most of the acreage is covered in mixed forest with lots of mature deciduous trees. A creek begins on property and feeds into the Middle Tyger River, which borders the back 800+/- feet of the parcel. This could be a wonderful Homestead, Development Opportunity or Both!



5' TOPO CONTOUR LINES  
FEMA FLOOD ZONES (2021)  
FROM SPARTANBURG COUNTY GIS

