

# LANGSTON BLACK

REAL ESTATE, INC.

## FLEX SPACE FOR LEASE

2,400+- SF (UNIT 16)

1097 HWY 101 SOUTH, GREER

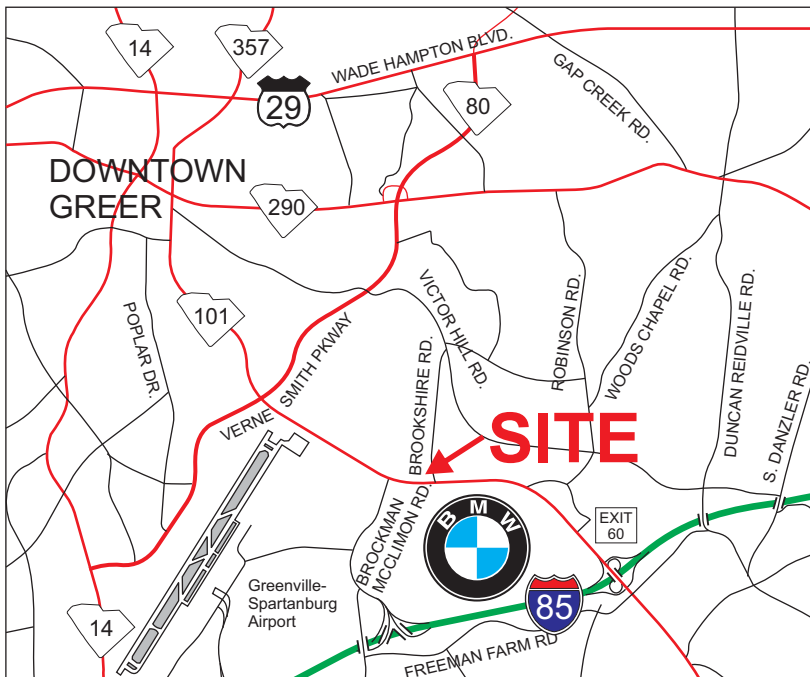
LOCATED IN GATEWAY BUSINESS PARK ACROSS FROM BMW MANUFACTURING

1,650+- SF OFFICE AREA  
750+- SF WAREHOUSE



ONE PRIVATE OFFICE  
2 RESTROOMS  
BREAK ROOM  
LARGE OPEN AREA  
2 DOCK HIGH DOORS

BUILDING ACCESS  
IS FROM  
BROOKSHIRE  
ROAD



- TAX MAP 5-24-00-002.00
- ZONED CITY OF GREER I1

FOR MORE INFORMATION, INCLUDING  
LEASE RATES, PLEASE CONTACT  
ROGER BARNES AT 864-915-4622  
rbarnes@langston-black.com

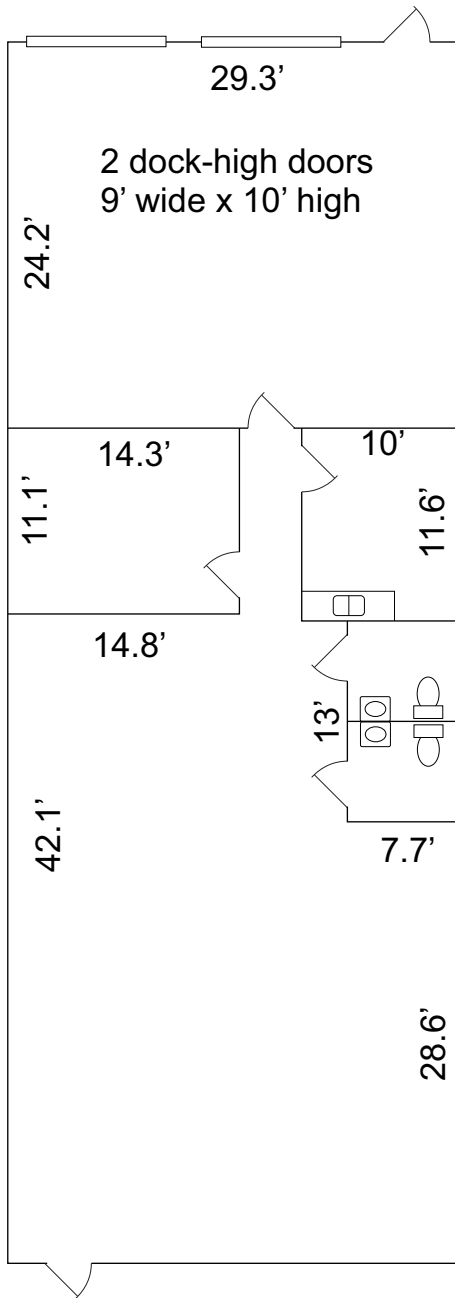
**LANGSTON BLACK**  
REAL ESTATE, INC.

P.O. BOX 2167  
GREER, S.C. 29652  
BUS: 864-848-9070

402  
16

[www.langston-black.com](http://www.langston-black.com)

Every effort has been made to ensure the accuracy of the enclosed data, but we assume no responsibility for errors. All conditions and pricing subject to change without notice.  
(LANGSTON-BLACK SITE #402 - UNIT 16)



UNIT 16  
30' X 80'

