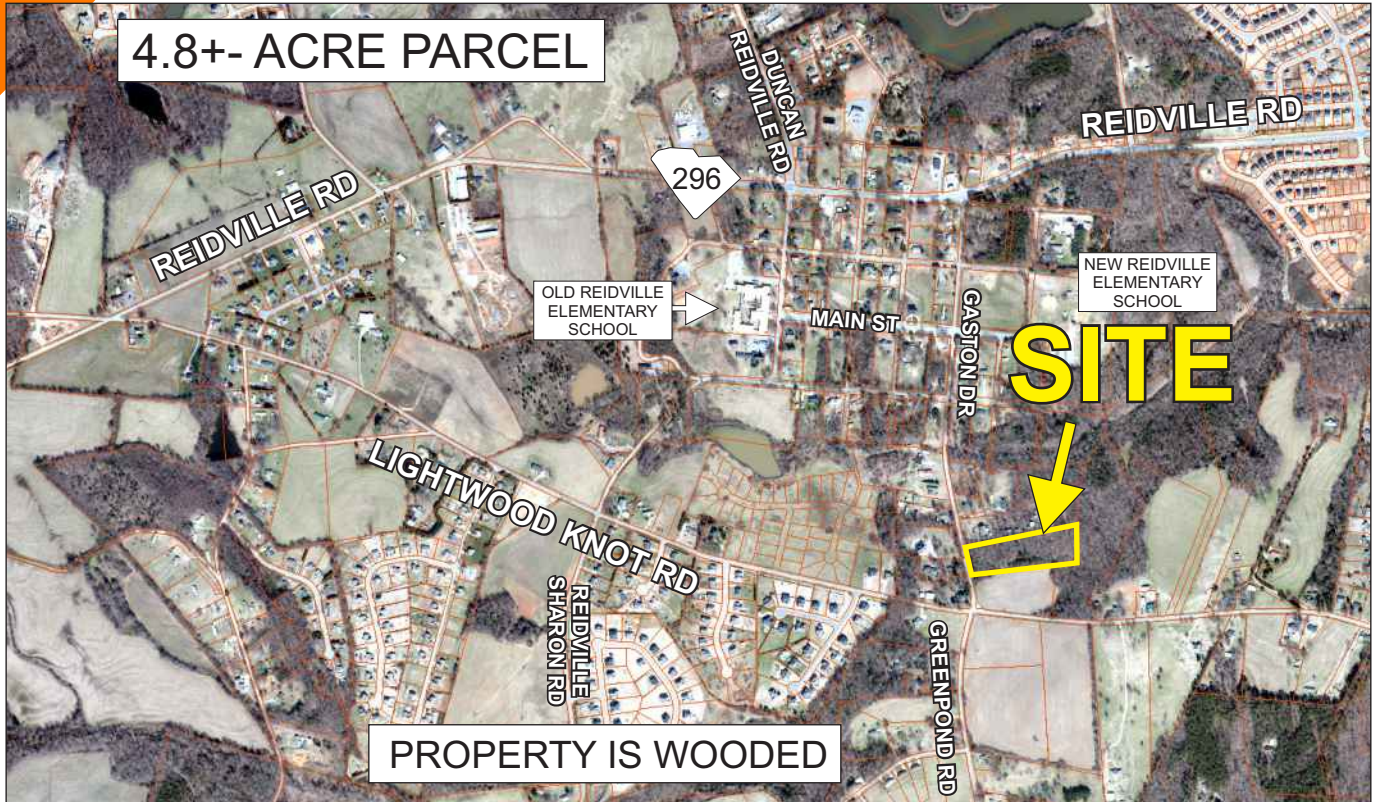


LAND FOR SALE

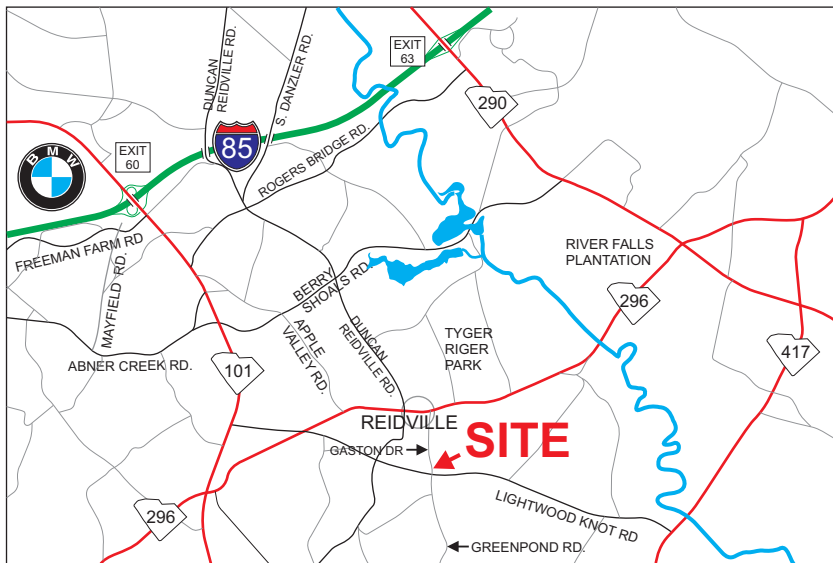
JUST OFF OF LIGHTWOOD KNOT ROAD

GASTON DRIVE, REIDVILLE

4.8+- ACRE PARCEL



PROPERTY IS WOODED



- PUBLIC WATER AVAILABLE
- IN REIDVILLE CITY LIMITS
- TAX MAP 5-36-00-097.01

\$31,000/ACRE

FOR MORE INFORMATION CONTACT
BOB ASHWORTH AT 864-706-3488
bashworth@langston-black.com

LANGSTON BLACK

REAL ESTATE, INC.

P.O. BOX 2167
GREER, S.C. 29652
BUS: 864-848-9070

023

www.langston-black.com



- 0.7+- MILE FROM HWY 296 (REIDVILLE RD)
- 2.1+- MILES FROM HWY 101
- 2.3 MILES FROM HWY 417
- 3.5+- MILES FROM HWY 290 (HWY 290 / HWY 296 INTERCHANGE)