

# LANGSTON BLACK

REAL ESTATE, INC.

## OFFICE SUITE FOR LEASE

556 MEMORIAL DRIVE EXTENSION, GREER

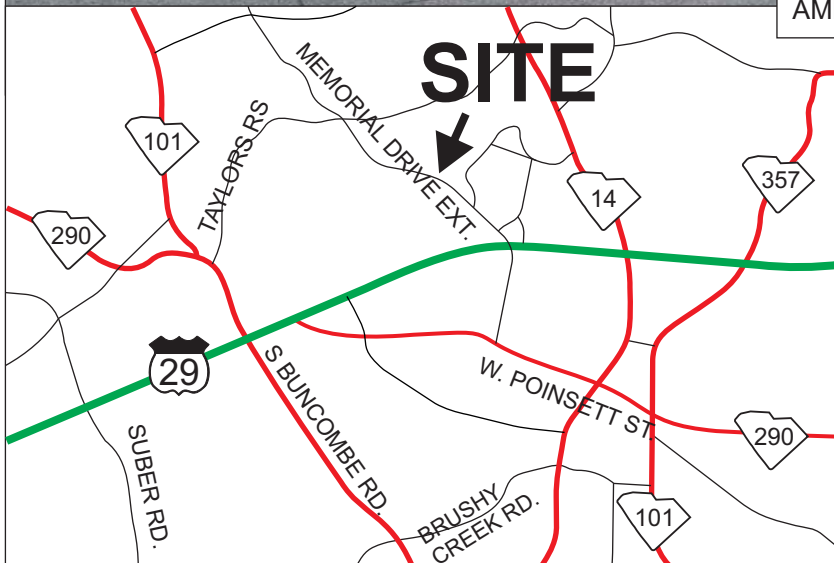


Greer  
Professional  
Park

SUITE D: 4,642+- SF ON MAIN LEVEL  
OWNER WILLING DEMISE INTO 2 SUITES



CONVENIENTLY LOCATED 1/2+- MILE  
FROM WADE HAMPTON BLVD. (HWY 29)  
AMPLE ON-SITE PARKING



LEASE RATE: \$12/SF  
MODIFIED GROSS LEASE

FOR MORE INFORMATION CONTACT  
JIM GRIFFIN AT 864-593-3000  
jgriffin@langston-black.com

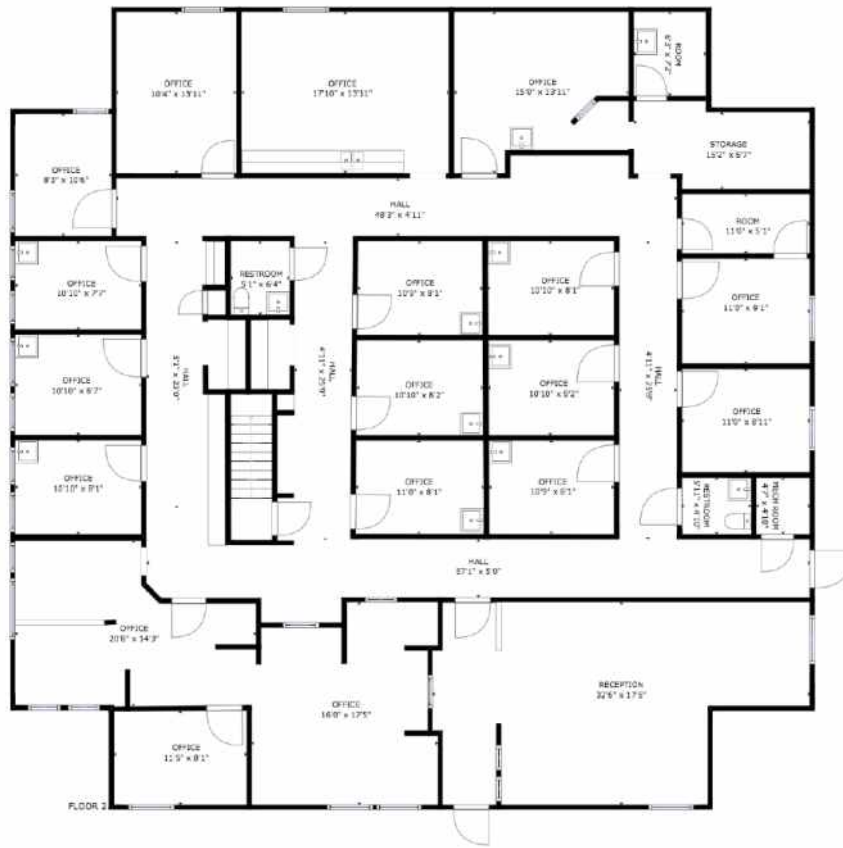
**LANGSTON BLACK**  
REAL ESTATE, INC.

P.O. BOX 2167  
GREER, S.C. 29652  
BUS: 864-848-9070

414

[www.langston-black.com](http://www.langston-black.com)

Every effort has been made to ensure the accuracy of the enclosed data, but we assume no responsibility for errors. All conditions and pricing subject to change without notice.  
(LANGSTON-BLACK SITE #414)







0.5+- MILE FROM WADE HAMPTON BLVD. (HWY 29)

1.2+- MILES FROM THE INTERSECTION OF WADE HAMPTON BLVD. AND HWY 14

1.5+- MILES FROM THE INTERSECTION OF WADE HAMPTON BLVD. AND S. BUNCOMBE RD.

1.7+- MILES FROM DOWNTOWN GREER