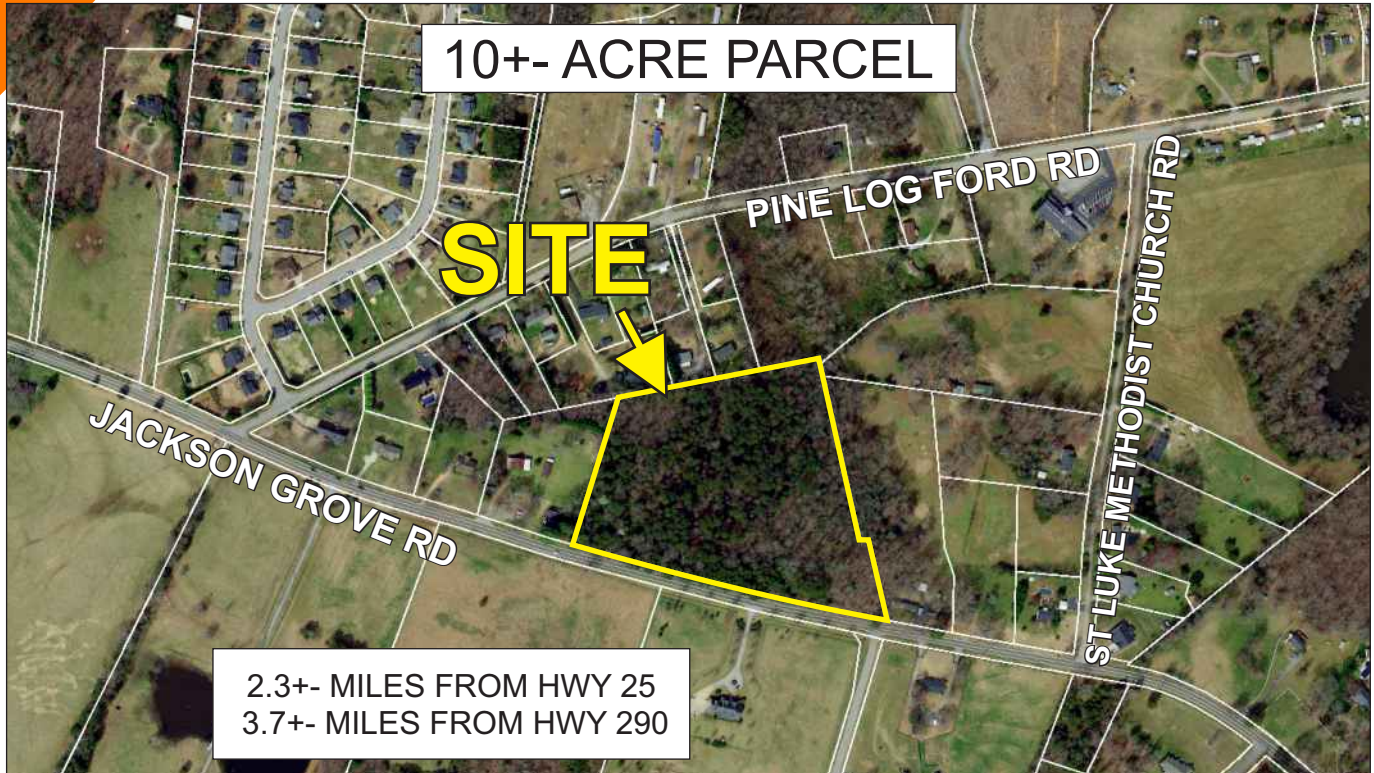
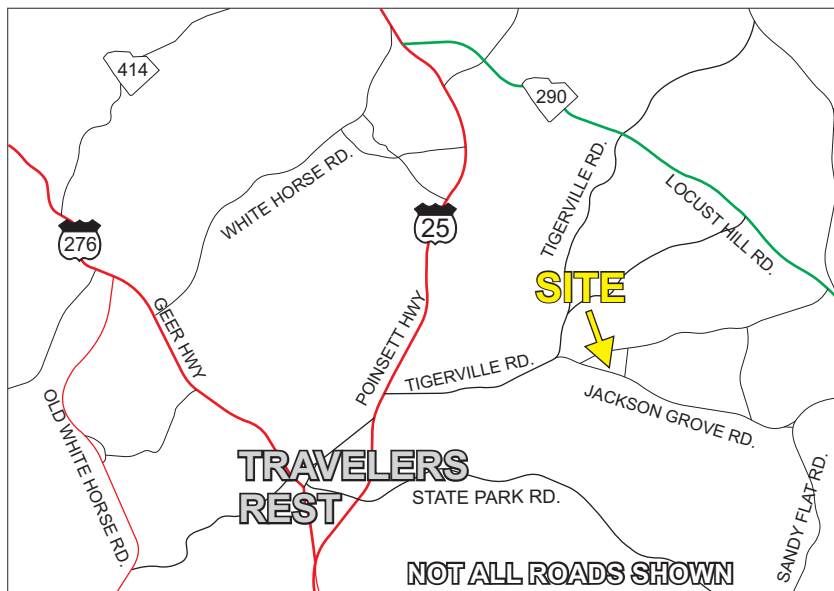


### JACKSON GROVE ROAD, TRAVELERS REST

10+- ACRE PARCEL



2.3+- MILES FROM HWY 25  
3.7+- MILES FROM HWY 290



- UNZONED IN GREENVILLE COUNTY
- PUBLIC WATER AVAILABLE
- TAX MAP 0501.04-01-016.11

## \$21,000/ACRE

FOR MORE INFORMATION CALL  
JEFF HOWELL AT 864-419-5999  
jhowell@langston-black.com

### LANGSTON BLACK

REAL ESTATE, INC.

P.O. BOX 2167  
GREER, S.C. 29652  
BUS: 864-848-9070

042

[www.langston-black.com](http://www.langston-black.com)



**SITE**

TIGERVILLE RD

PINE LOG FORD RD

TIGERVILLE RD

JACKSON GROVE RD

ST LUKE  
METHODIST  
CHURCH RD