

## OFFICE / RETAIL SPACE FOR LEASE

ACROSS HWY 29 FROM GREER KIA DEALERSHIP

14332 EAST WADE HAMPTON BLVD. (HWY 29), GREER, SC

WADE HAMPTON EAST BUILDING

1,200+- SF UNIT

**FOR LEASE**

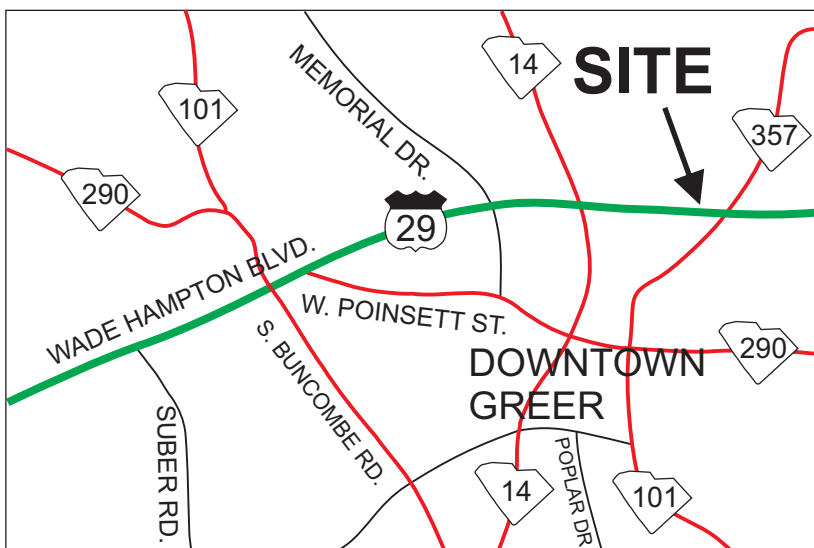


**BUILDING  
TENANTS  
INCLUDE:**

14332: **AVAILABLE**  
14330: CAROLINA CHIROPRACTIC  
14328: THE GRAF AGENCY, LLC  
14326: PEACHY SERVICES, LLC

14324: #1 MASSAGE  
14322: BARRELS AND BLADES  
14332G: (LOWER LEVEL): **AVAILABLE**

CORNER OF HWY 29 AND LAKEVIEW DRIVE



- ZONED CITY OF GREER GREER C3.
- TAX MAP 9-03-10-029.07

**LEASE RATE: \$17/SF NNN**  
NNN: \$3.00/SF

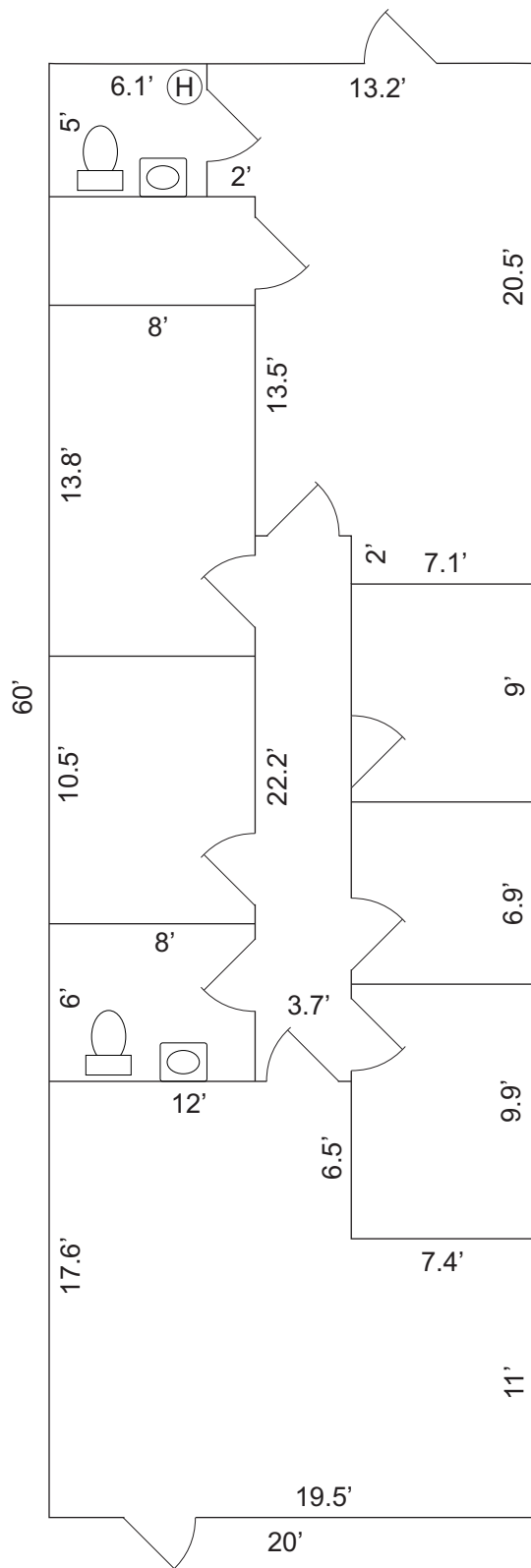
FOR MORE INFORMATION CONTACT  
BRAD TOY, CCIM, AT 864-640-7429  
btoy@langston-black.com

**Langston Black**  
REAL ESTATE, INC.

P.O. BOX 2167  
GREER, S.C. 29652  
BUS: 864-848-9070

423

[www.langston-black.com](http://www.langston-black.com)



BUILDING HAS PRIVATE PARKING LOT  
HEATED AND COOLED WITH ELECTRIC  
HEAT PUMP SYSTEM

