

LANGSTON BLACK

REAL ESTATE, INC.

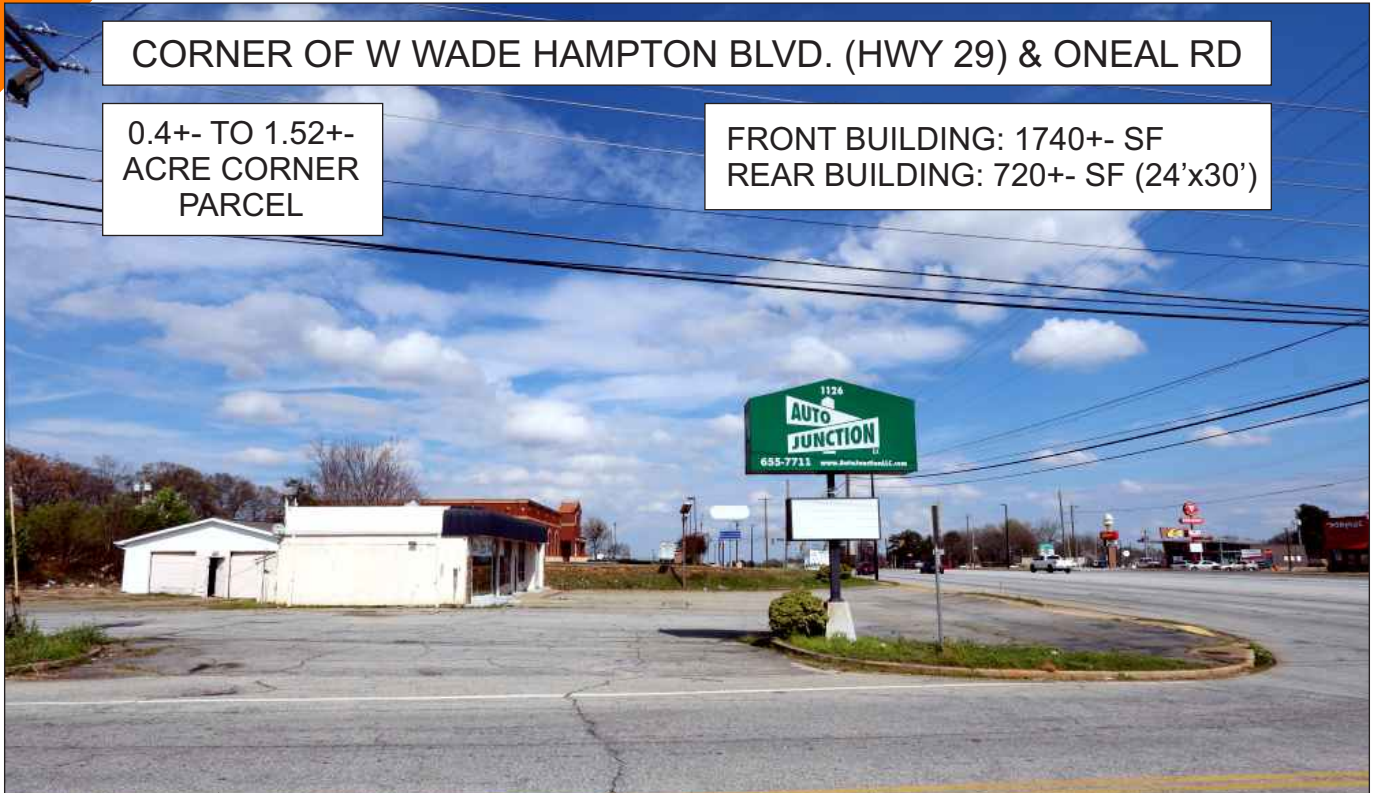
BUILD TO SUIT

1126 WEST WADE HAMPTON BLVD, GREER

CORNER OF W WADE HAMPTON BLVD. (HWY 29) & ONEAL RD

0.4+- TO 1.52+-
ACRE CORNER
PARCEL

FRONT BUILDING: 1740+- SF
REAR BUILDING: 720+- SF (24'x30')



- ALL UTILITIES AVAILABLE
- ZONED CITY OF GREER C3
- TAX MAP T017.01-02-006.01, 006.02 & 006.05

FOR MORE INFORMATION, INCLUDING LEASE RATE, PLEASE CONTACT CHUCK LANGSTON AT 864-230-4302 clangston@langston-black.com

LANGSTON BLACK
REAL ESTATE, INC.

P.O. BOX 2167
GREER, S.C. 29652
BUS: 864-848-9070

455

www.langston-black.com

Every effort has been made to ensure the accuracy of the enclosed data, but we assume no responsibility for errors. All conditions and pricing subject to change without notice.
(LANGSTON-BLACK SITE #455)

