

# LANGSTON BLACK

REAL ESTATE, INC.

## OFFICE SUITE FOR LEASE

132A PILGRIM ROAD, GREENVILLE

1,050+- SF SUITE

GREAT LOCATION JUST  
OFF OF SMITH HINES RD.,  
CLOSE TO WOODRUFF RD



1+- MILE FROM I-385 &  
1.8+- MILES FROM I-85

### FEATURES:

- ENTRY AREA
- 2 PRIVATE OFFICES
- OPEN AREA SUITABLE FOR CUBICLES
- RESTROOM
- STORAGE AREA
- 2 PRIVATE ENTRY DOORS

LEASE RATE: \$1,200/MO

POWER, WATER/SEWER INCLUDED  
(PHONE AND INTERNET NOT INCLUDED)

FOR MORE INFORMATION CONTACT  
RICK HAMMETT AT 864-313-9507  
rhammett@langston-black.com

**LANGSTON BLACK**  
REAL ESTATE, INC.

P.O. BOX 2167  
GREER, S.C. 29652  
BUS: 864-848-9070

401

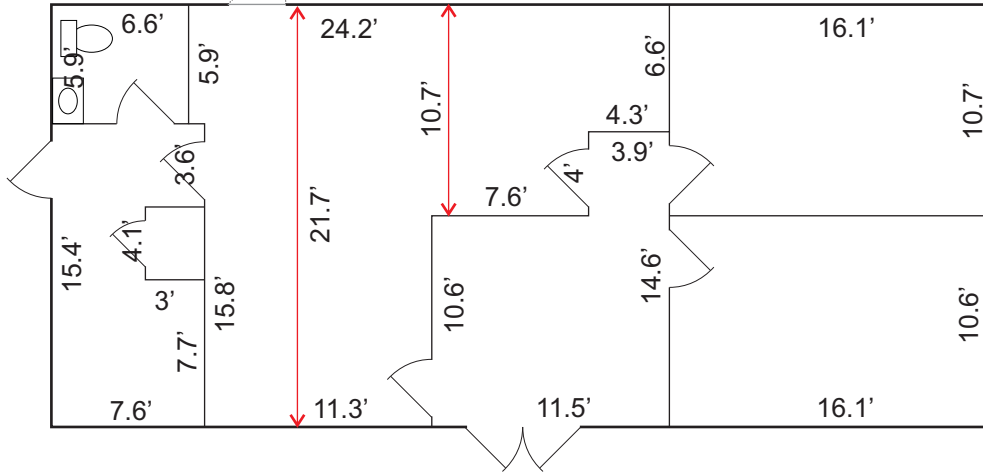


[www.langston-black.com](http://www.langston-black.com)

Every effort has been made to ensure the accuracy of the enclosed data, but we assume no responsibility for errors. All conditions and pricing subject to change without notice.  
(LANGSTON-BLACK SITE #401)



THE REMAINDER OF THE BUILDING IS OCCUPIED BY GRAY ENGINEERING CONSULTANTS



ZONED GREENVILLE COUNTY S1

TAX MAP 0547.03-01-052.06

