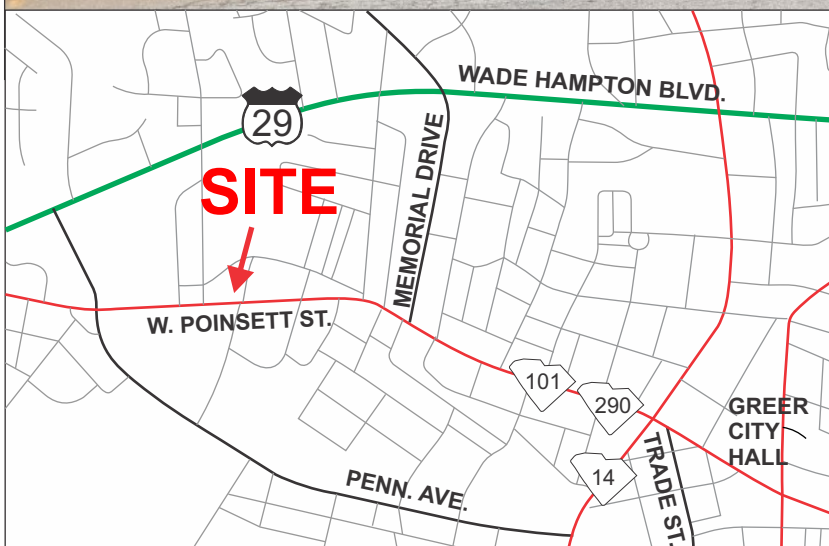


1000 WEST POINSETT STREET, GREER

1,655+- SF BUILDING WITH 6 OFFICES & 2 RESTROOMS



ADDITIONAL STORAGE SPACE IN
BASEMENT WITH DRIVE-IN DOOR
(570+- SF) & ATTIC (475+- SF)



ZONED CITY OF GREER C2

\$255,000

FOR MORE INFORMATION CALL
TL BALDREE AT 864-430-8423
tlbaldree@langston-black.com

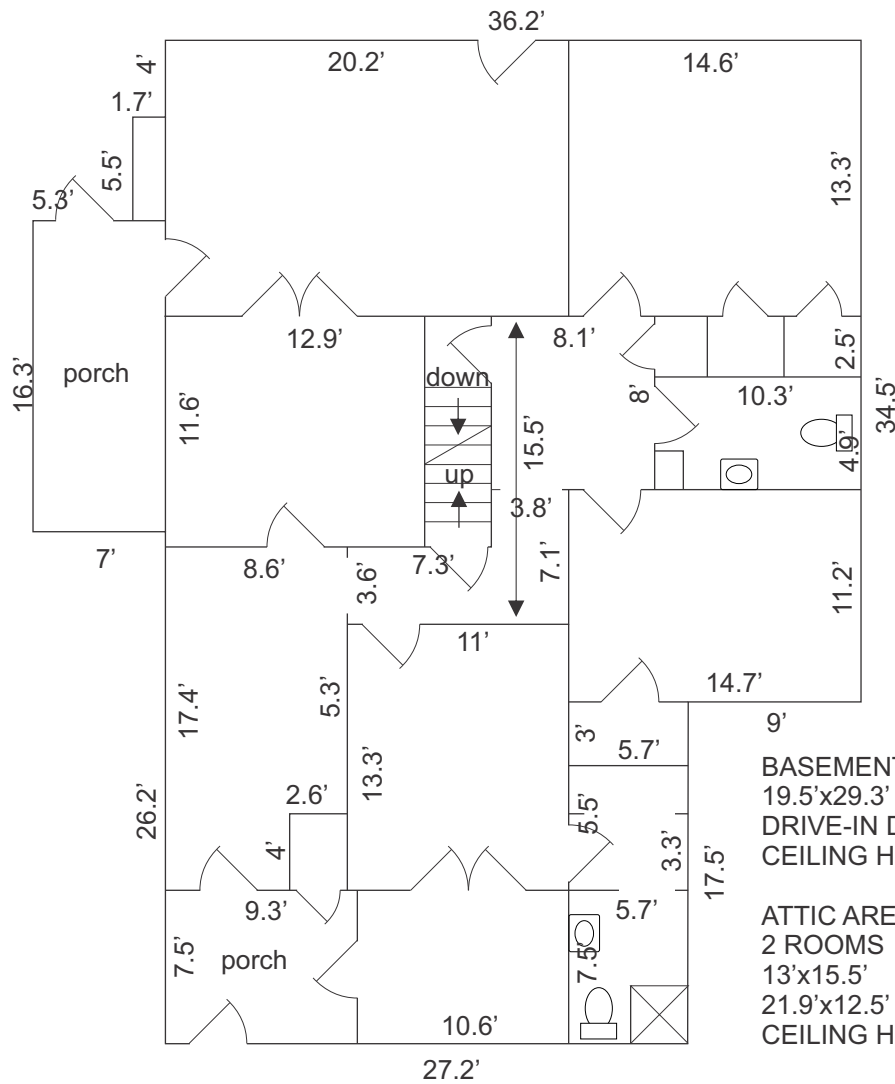
LANGSTON BLACK
REAL ESTATE, INC.

P.O. BOX 2167
GREER, S.C. 29652
BUS: 864-848-9070

214

www.langston-black.com





OLDER HOME WONDERFULLY CONVERTED FOR OFFICE USE

- PAVED OFF STREET PARKING
- 0.325+- ACRE PARCEL
- HARDWOOD FLOORS
- CEILING FANS IN ALL OFFICES
- TAX MAP G013.00-03-005.00
- HANDICAP RAMP TO REAR DOOR
- 7' x 16' SUNROOM
- 9' x 7.5' ENCLOSED REAR PORCH AT ENTRY FROM HANDICAP RAMP

BASEMENT:
 19.5'x29.3'
 DRIVE-IN DOOR
 CEILING HEIGHT: 7'

ATTIC AREA:
 2 ROOMS
 13'x15.5'
 21.9'x12.5'
 CEILING HEIGHT: 6.3'



