

## OFFICE SUITES FOR LEASE

BUILDING ALSO AVAILABLE FOR PURCHASE

556 MEMORIAL DRIVE EXTENSION, GREER



Greer  
Professional  
Park

- SUITE B: 2,227+- SF ON LOWER LEVEL
  - SUITE D: 5,340+- SF ON MAIN LEVEL & 2ND FLOOR (698+- SF ON 2ND FLOOR)
- SUITE A IS LEASED TO URGENT CARE UPSTATE

AMPLE ON-SITE PARKING

BUILDING EXTERIOR RECENTLY PAINTED

IMPROVEMENTS MADE TO THE PARKING LOT AND ENTIRE OFFICE COMPLEX

CONVENIENTLY LOCATED 1/2+- MILE FROM WADE HAMPTON BLVD. (HWY 29)

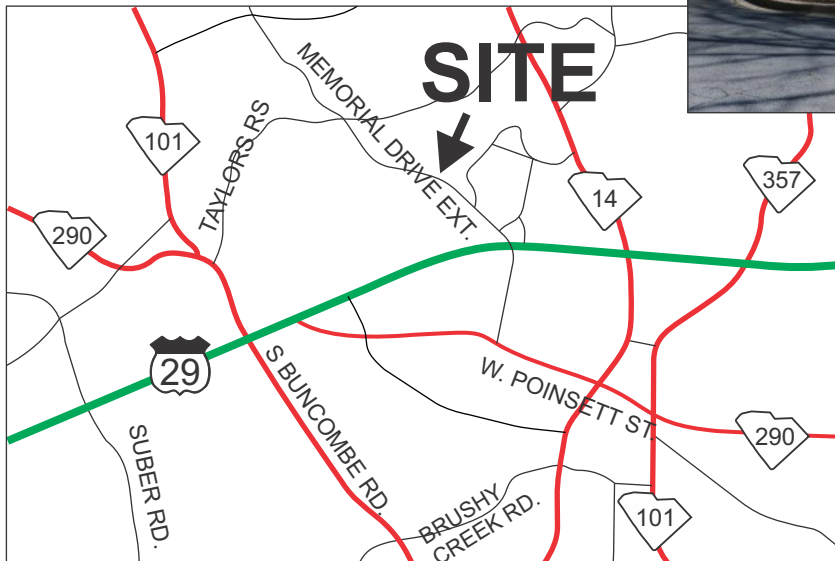
LEASE RATE: \$10/SF NNN

SALE PRICE: \$425,000



9,982+- SF BUILDING

[CLICK FOR 3D VISUAL TOUR](#)



FOR MORE INFORMATION CONTACT:

BRAD TOY, CCIM, AT 864-640-7429  
btoy@langston-black.com

JIM GRIFFIN AT 864-593-3000  
jgriffin@langston-black.com

**LANGSTON BLACK**  
REAL ESTATE, INC.

P.O. BOX 2167  
GREER, S.C. 29652  
BUS: 864-848-9070

302

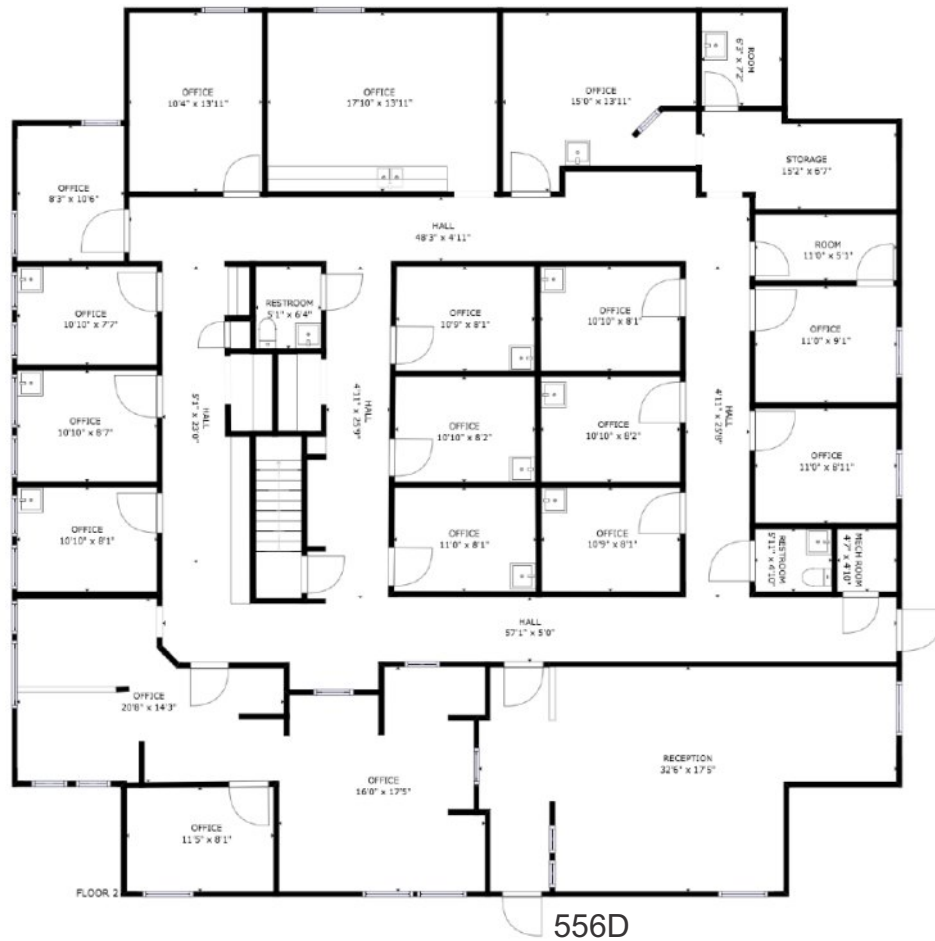
[www.langston-black.com](http://www.langston-black.com)

556 MEMORIAL DRIVE

556B

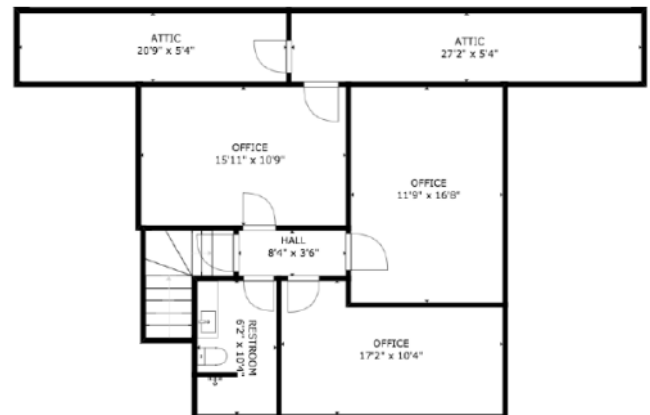


9,982+- sf total for building - 4,642+- sf per floor + 698+- sf on 2nd floor





UPSTAIRS SECTION OF 556D







0.5+- MILE FROM WADE HAMPTON BLVD. (HWY 29)

1.2+- MILES FROM THE INTERSECTION OF WADE HAMPTON BLVD. AND HWY 14

1.5+- MILES FROM THE INTERSECTION OF WADE HAMPTON BLVD. AND S. BUNCOMBE RD.

1.7+- MILES FROM DOWNTOWN GREER