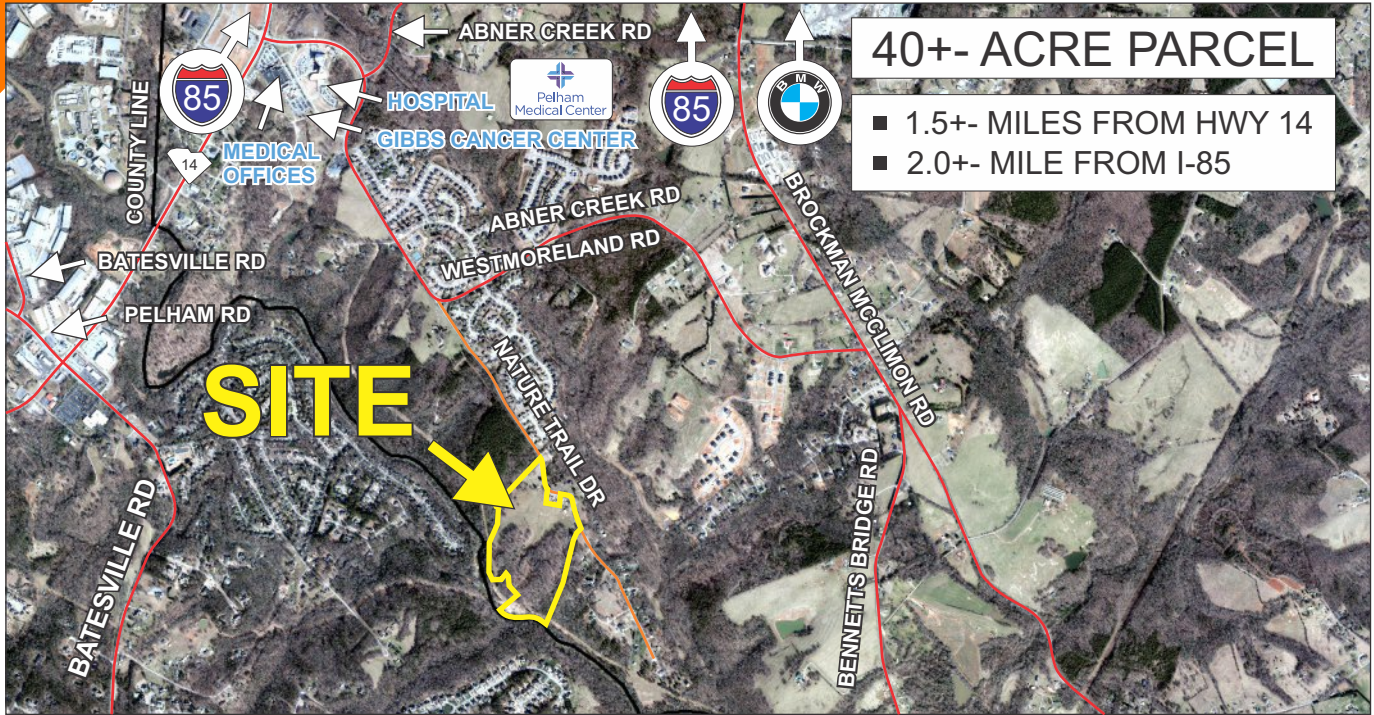
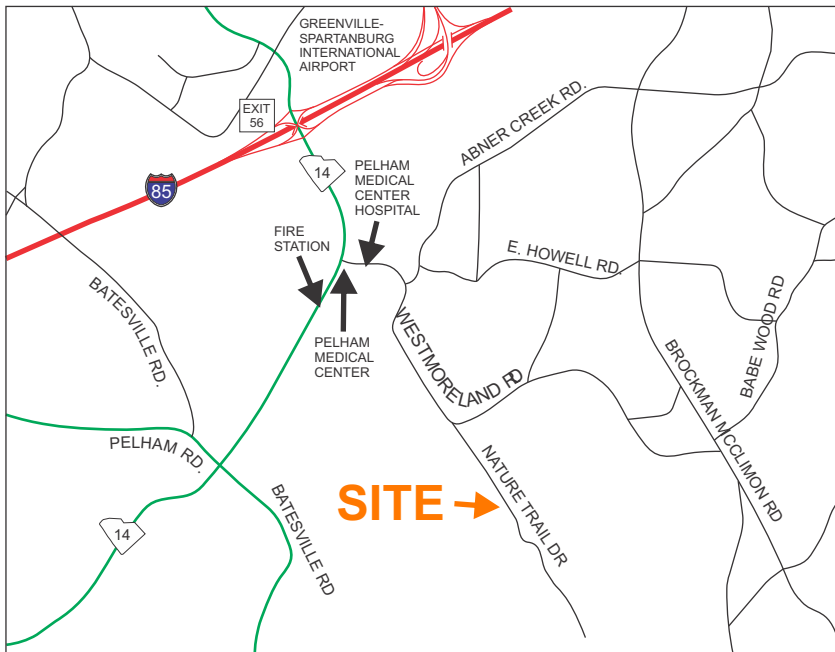


NATURE TRAIL DRIVE, GREER



40+- ACRE PARCEL

- 1.5+- MILES FROM HWY 14
- 2.0+- MILE FROM I-85



- ALL UTILITIES AVAILABLE
- ADJACENT TO GREER CITY LIMITS
- UNZONED IN SPARTANBURG COUNTY
- CLOSE TO AIRPORT & BMW

FOR MORE INFORMATION, INCLUDING PRICE, PLEASE CONTACT RICK HAMMETT AT 864-313-9507
rhammett@langston-black.com

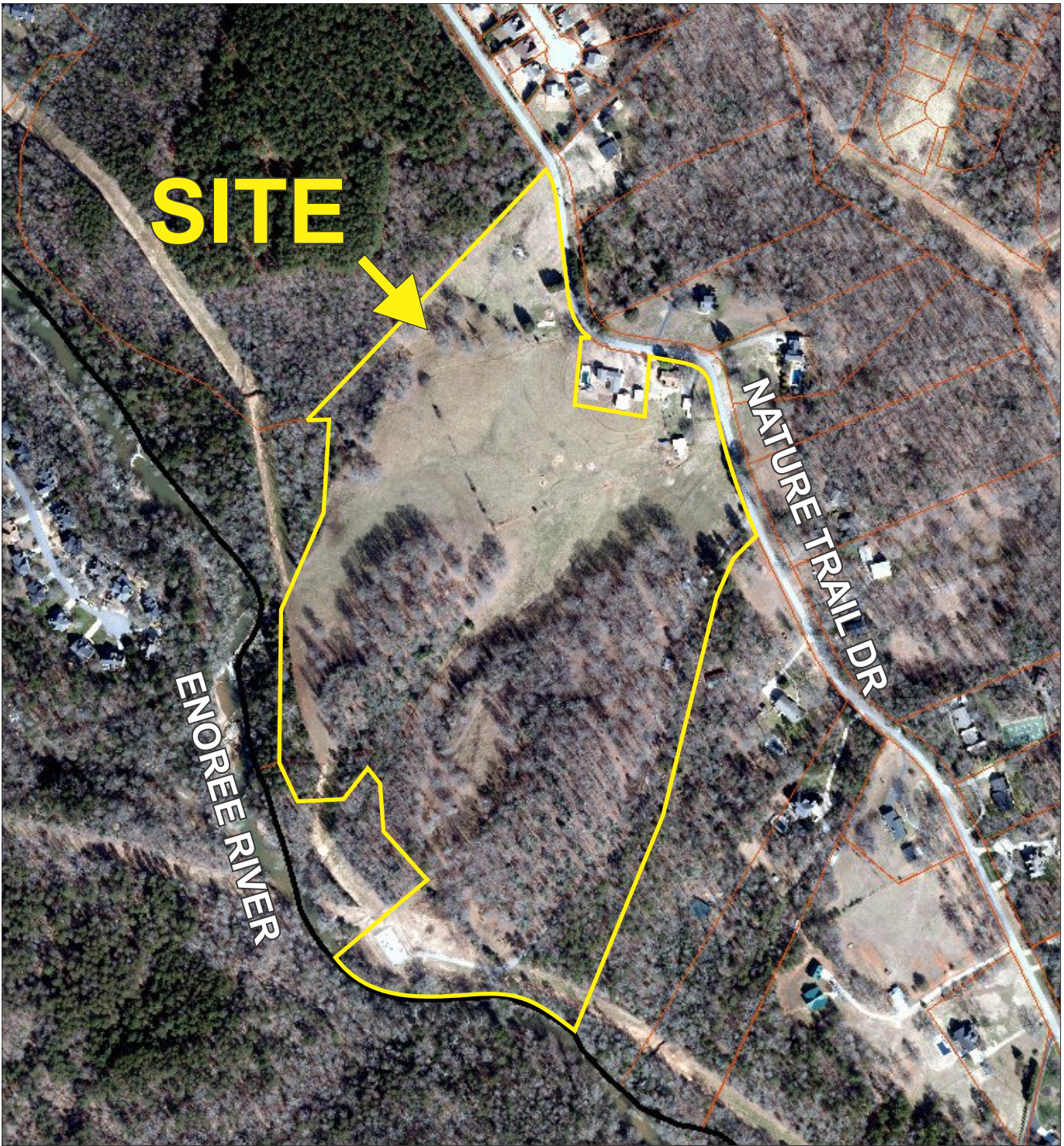
LANGSTON BLACK
REAL ESTATE, INC.

P.O. BOX 2167
GREER, S.C. 29652
BUS: 864-848-9070

008

www.langston-black.com

Every effort has been made to ensure the accuracy of the enclosed data, but we assume no responsibility for errors. All conditions and pricing subject to change without notice.
(LANGSTON-BLACK SITE #008)



- TAX MAP 9-08-00-003.00
- FRONTAGE ON THE ENOREE RIVER