

LANGSTON BLACK

REAL ESTATE, INC.

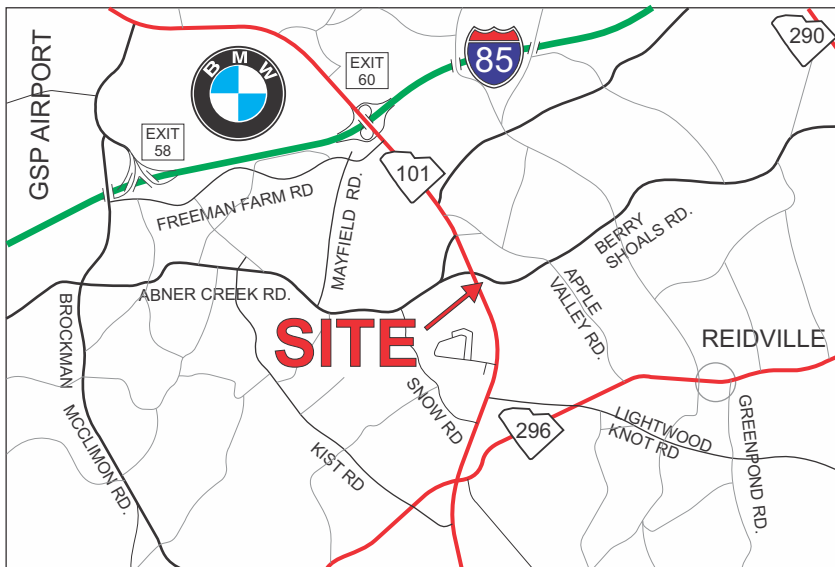
LAND FOR SALE

LOCATED ON SIGNALIZED INTERSECTION

CORNER OF HWY 101 & BERRY SHOALS ROAD, GREER



- TAX MAP 5-36-00-008.00
- UNZONED IN SPARTANBURG COUNTY
- ALL UTILITIES AVAILABLE
- POND CAN BE REMOVED OR POSSIBLY USED FOR DETENTION



\$850,000

FOR MORE INFORMATION CONTACT
RICK HAMMETT AT 864-313-9507
rhammett@langston-black.com

LANGSTON BLACK

REAL ESTATE, INC.

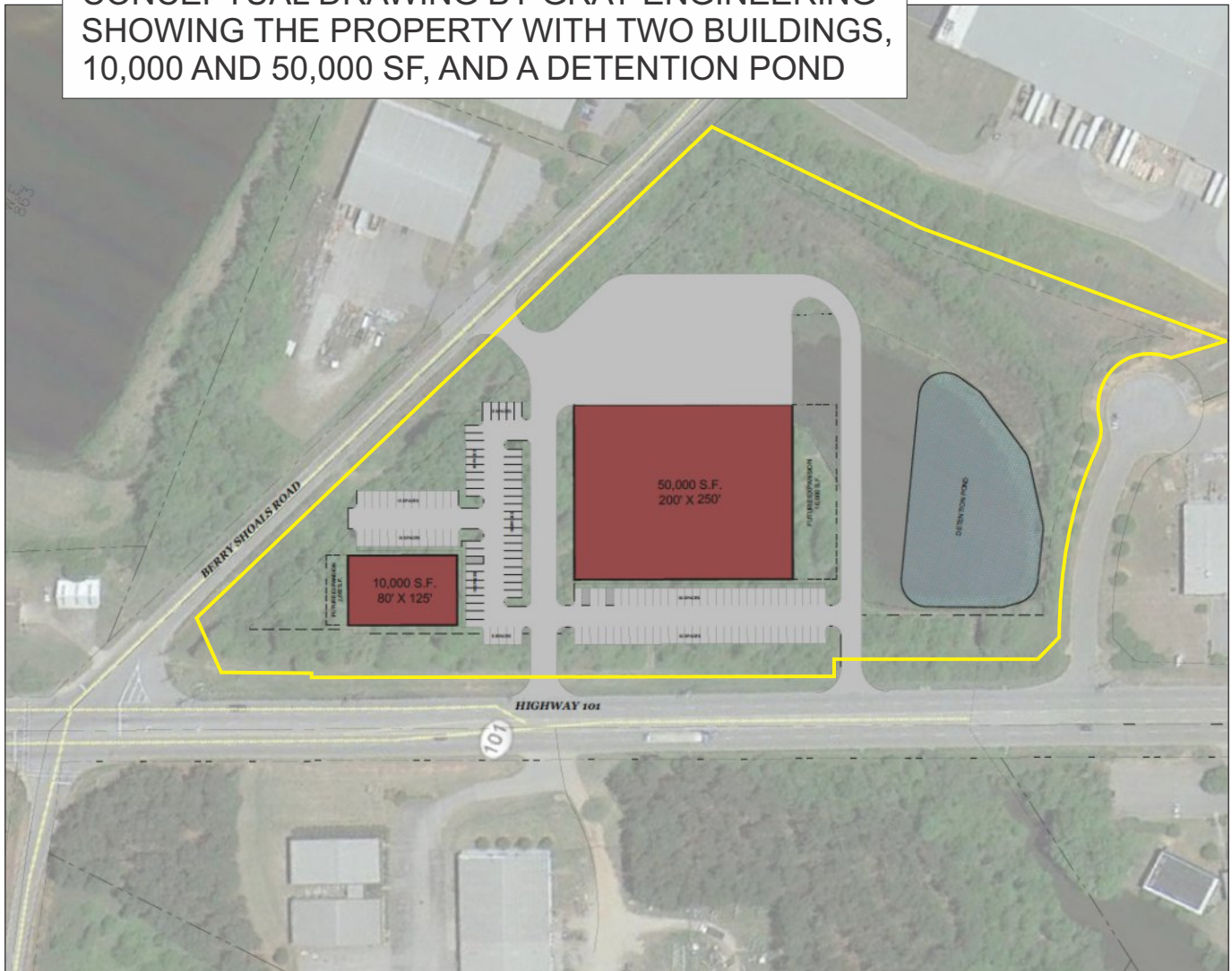
P.O. BOX 2167
GREER, S.C. 29652
BUS: 864-848-9070

036

www.langston-black.com

Every effort has been made to ensure the accuracy of the enclosed data, but we assume no responsibility for errors. All conditions and pricing subject to change without notice.
(LANGSTON-BLACK SITE #036)

CONCEPTUAL DRAWING BY GRAY ENGINEERING
SHOWING THE PROPERTY WITH TWO BUILDINGS,
10,000 AND 50,000 SF, AND A DETENTION POND



- 1.3+- MILES FROM I-85
- 2.7+- MILES FROM HWY 296
- 3.1+- MILES FROM BMW TRUCK ENTRANCE
- 3.5+- MILES FROM MICHELIN DISTRIBUTION CENTER
- 4.2+- MILES FROM FED EX TERMINAL AT GSP AIRPORT