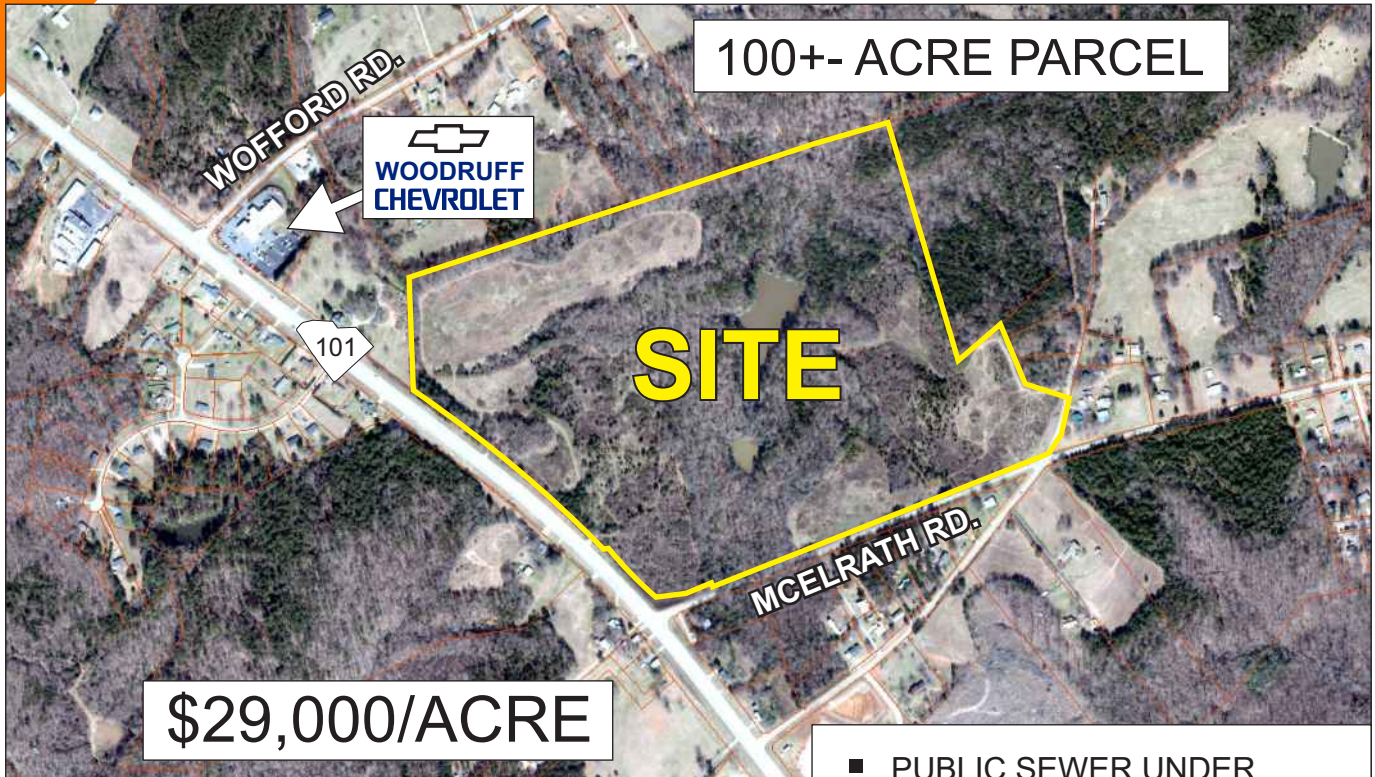


LAND FOR SALE

NEAR WOODRUFF CHEVEOLET

HWY 101 AND MCELRATH ROAD, WOODRUFF

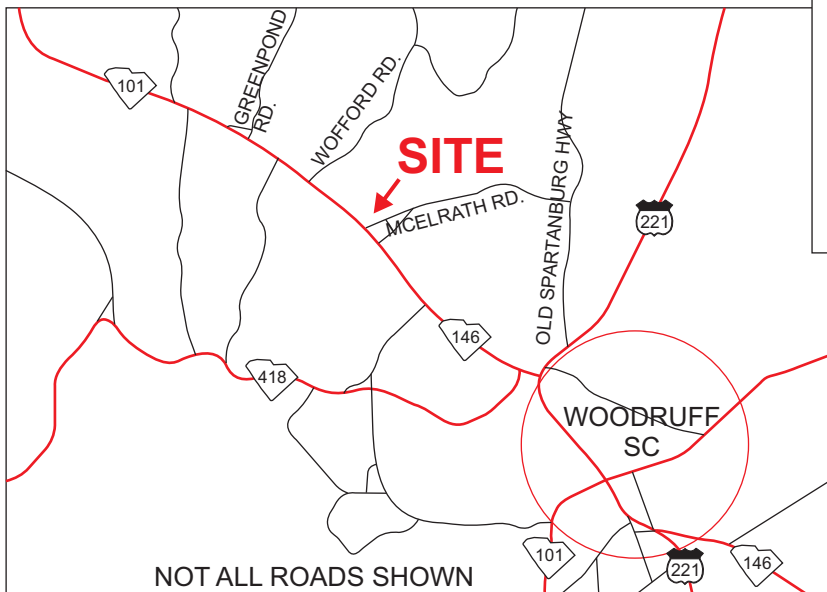


100+- ACRE PARCEL

SITE

\$29,000/ACRE

- PUBLIC SEWER UNDER STUDY
- PUBLIC WATER AVAILABLE
- TAX MAP 4-18-00-020.00
- UNZONED IN SPARTANBURG COUNTY



NOT ALL ROADS SHOWN

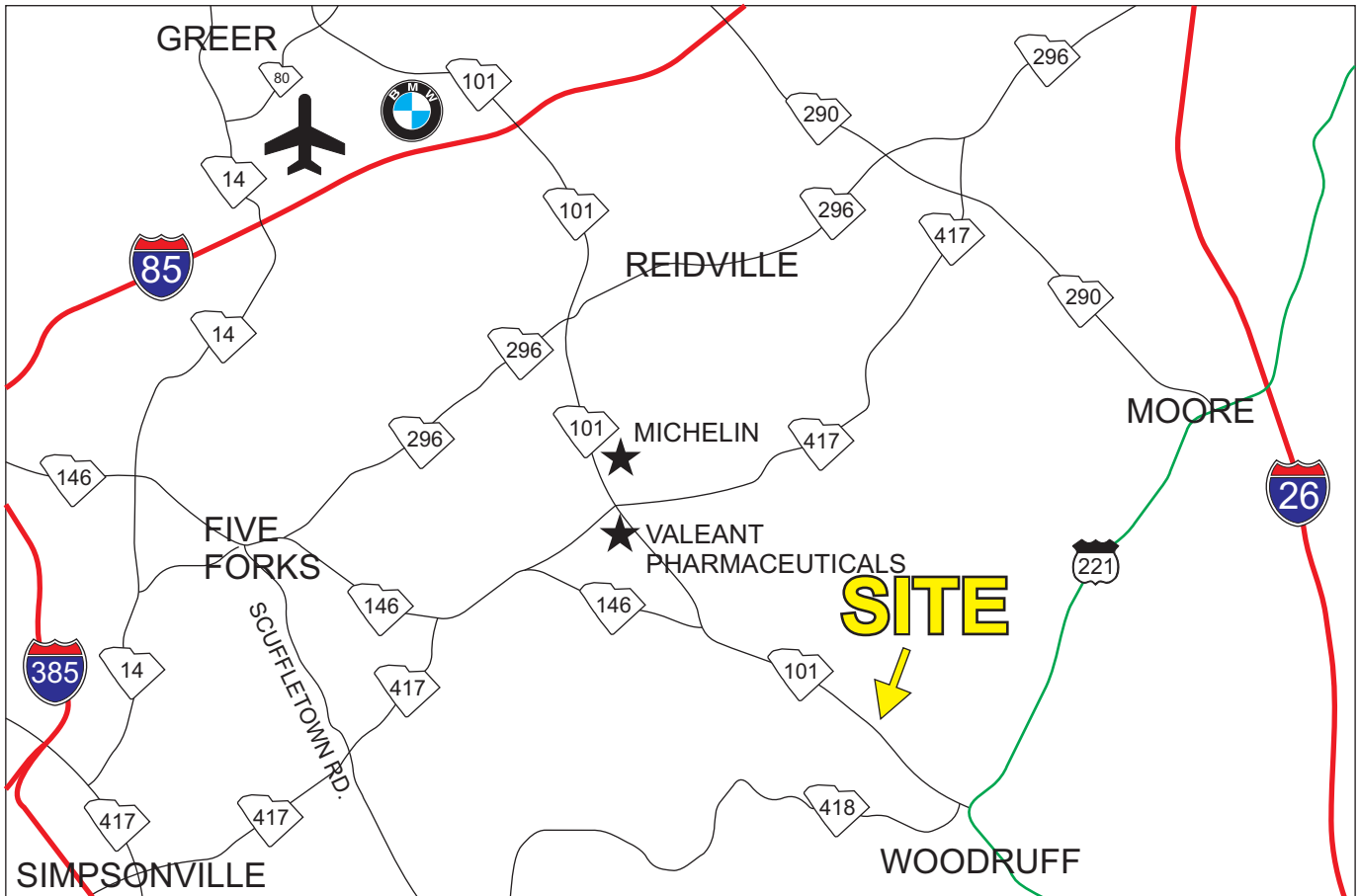
FOR MORE INFORMATION CONTACT
CHUCK LANGSTON AT 864-230-4302
clangston@langston-black.com

LANGSTON BLACK
REAL ESTATE, INC.

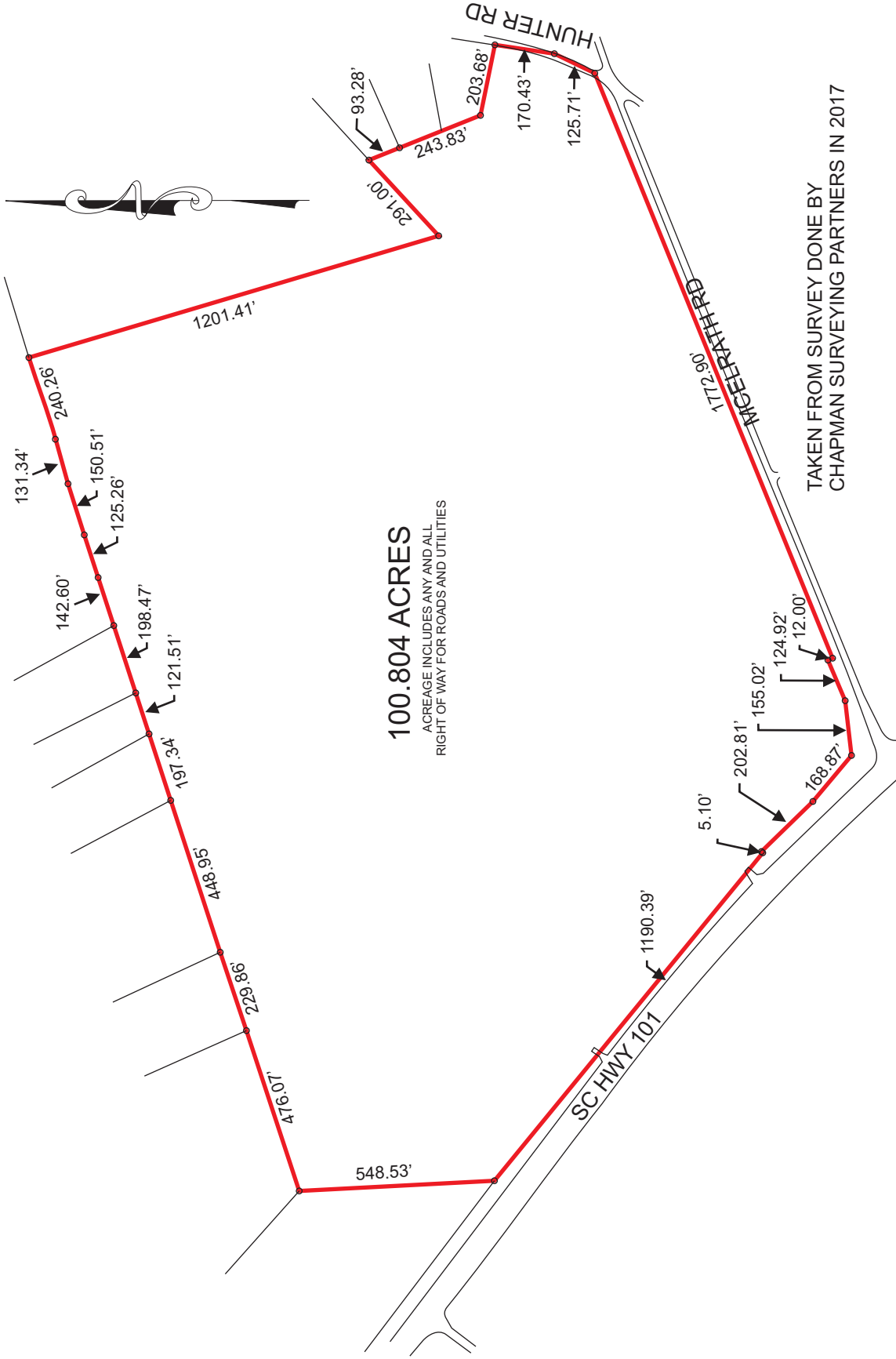
P.O. BOX 2167
GREER, S.C. 29652
BUS: 864-848-9070

014

www.langston-black.com



- 2.8+- MILES TO DOWNTOWN WOODRUFF
- 5+- MILES TO HWY 417 (MICHELIN DISTRIBUTION CENTER AND VALEANT PHARMACEUTICALS DISTRIBUTION CENTER)
- 8+- MILES TO I-26 (EXIT 35)
- 8+- MILES TO HWY 290
 - TORAY INDUSTRIES
 - DRAXLMAIER AUTOMOTIVE
 - KOBELCO CONSTRUCTION MACHINERY USA
 - STERLING CONTRACT PACKAGING HEADQUARTERS
- 11+- MILES TO FIVE FORKS AREA
- 11+- MILES TO I-85
- 11.5+- MILES TO BMW MANUFACTURING
- 14.5+- MILES TO GREENVILLE SPARTANBURG AIRPORT



TAKEN FROM SURVEY DONE BY
 CHAPMAN SURVEYING PARTNERS IN 2017