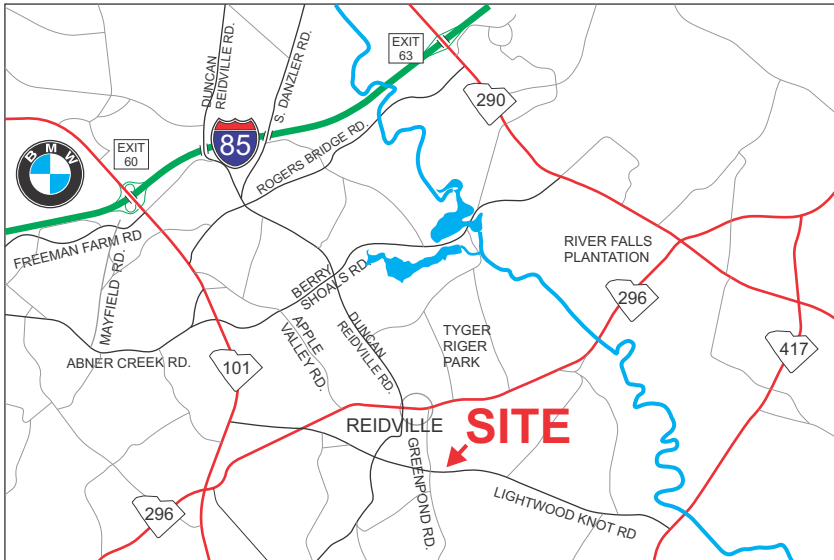
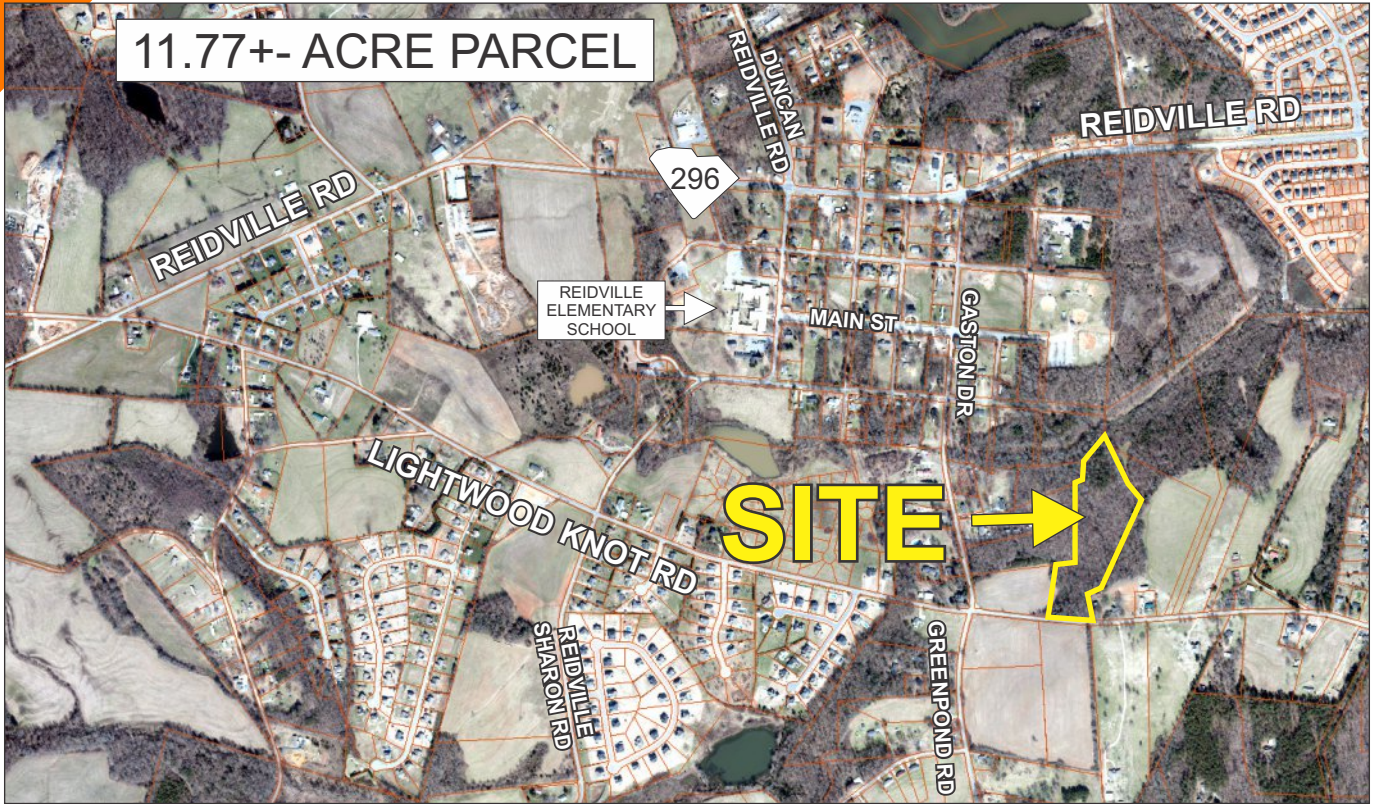


LIGHTWOOD KNOT ROAD, REIDVILLE

11.77+- ACRE PARCEL



PUBLIC WATER AND NATURAL
GAS AVAILABLE

IN REIDVILLE CITY LIMITS

SALES PRICE: ~~\$274,000~~

REDUCED TO \$199,000

FOR MORE INFORMATION CONTACT
BOB ASHWORTH AT 864-706-3488
bashworth@langston-black.com

LANGSTON BLACK
REAL ESTATE, INC.

P.O. BOX 2167
GREER, S.C. 29652
BUS: 864-848-9070

019

www.langston-black.com



SPARTANBURG COUNTY TAX MAP 5-36-00-097.05

- 0.7+- MILE FROM HWY 296 (REIDVILLE RD)
- 2.1+- MILES FROM HWY 101
- 2.3 MILES FROM HWY 417
- 3.5+- MILES FROM HWY 290 (HWY 290 / HWY 296 INTERCHANGE)