

## BANK / OFFICE SPACE FOR LEASE

400 MEMORIAL DRIVE EXT. @ HWY 29, GREER

8,810+- SF ON MAIN FLOOR  
DRIVE UP TELLER WINDOW WITH 6 LANES

- FLOOR CAN BE SUBDIVIDED
- WALK-IN VAULT
- LARGE PARKING LOT
- STANDBY GENERATOR

MULTIPLE PROPERTY OWNERS ARE LICENSED REAL ESTATE AGENTS



**FREE  
PARKING**

PREVIOUSLY BB&T BRANCH

LEASE RATE: \$24/SF NNN

FOR MORE INFORMATION CONTACT  
OWNER/AGENT CHUCK LANGSTON  
AT 864-230-4302

clangston@langston-black.com

**Langston Black**  
REAL ESTATE, INC.

P.O. BOX 2167

GREER, S.C. 29652

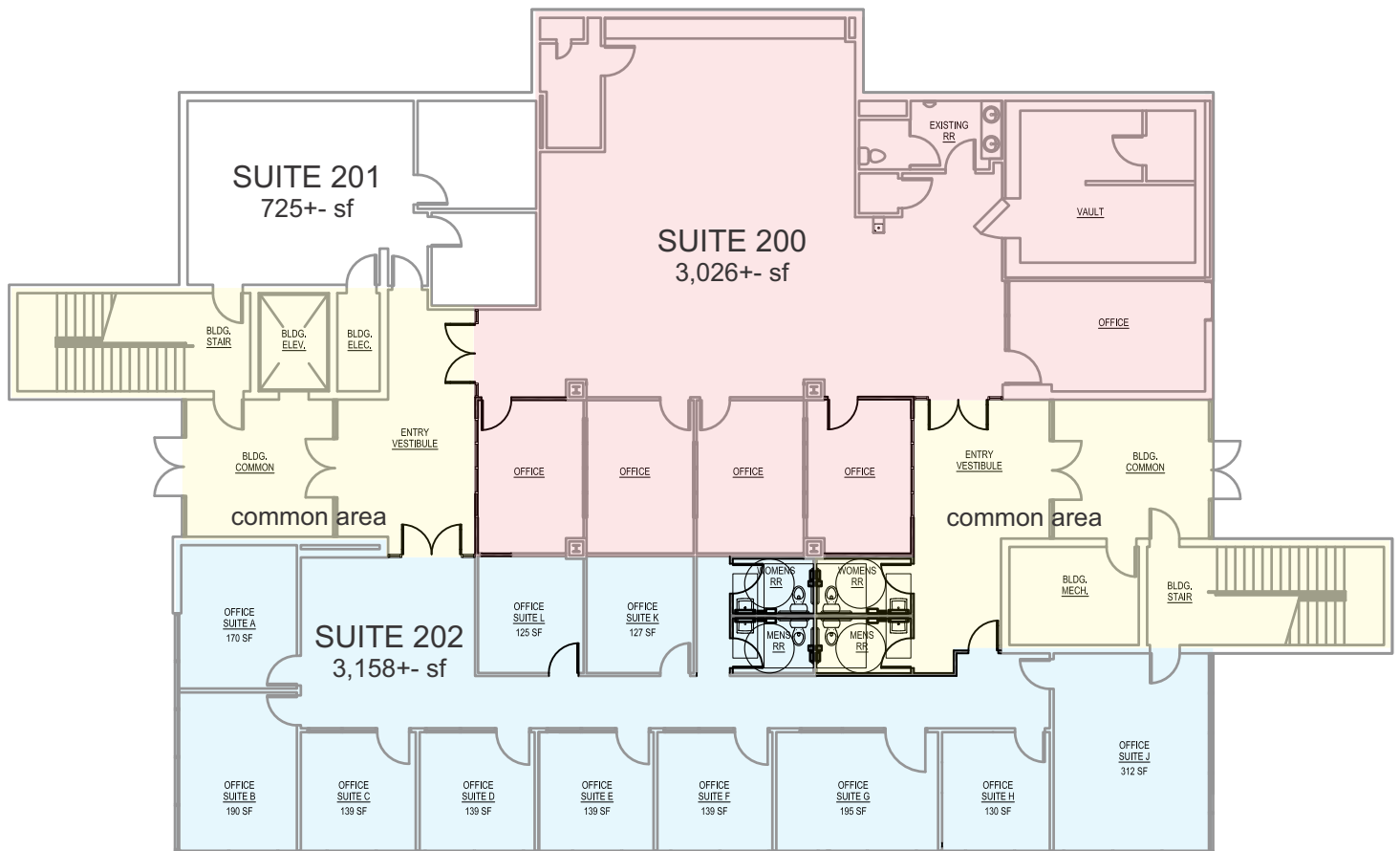
BUS: 864-848-9070

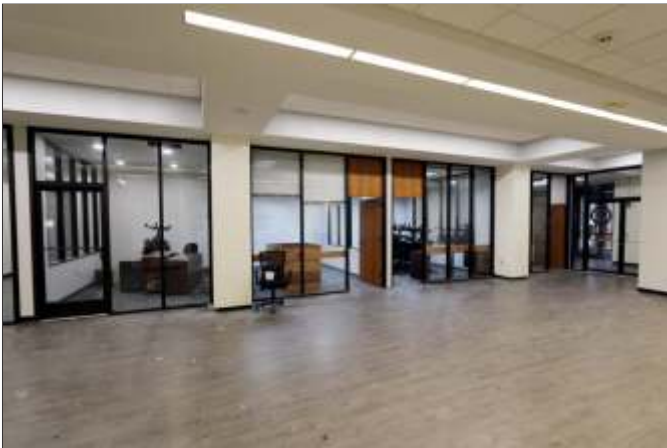
415.1

[www.langston-black.com](http://www.langston-black.com)



- SUITE 100 LEASED TO LANGSTON BLACK REAL ESTATE
- SUITE 300B LEASED TO OTB TAX
- SUITE 400 LEASED TO FAMILY DENTAL HEALTH







JUST BEHIND MCDONALDS WITH GREAT VISIBILITY FROM HWY 29



TAX MAP G018.00-05-007.05  
ZONED CITY OF GREER C3