

LANGSTON BLACK

REAL ESTATE, INC.

LAND FOR SALE

LOCATED 1+MILE OFF OF HWY 101

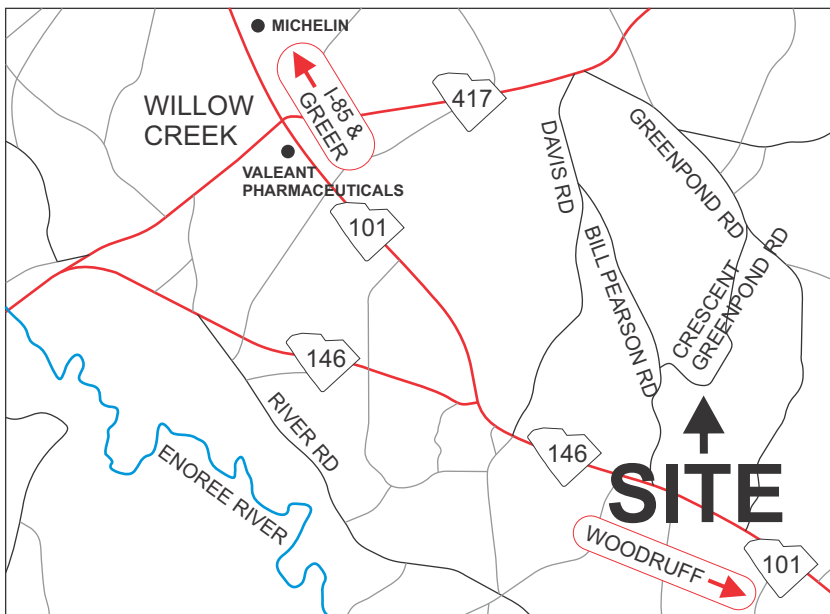
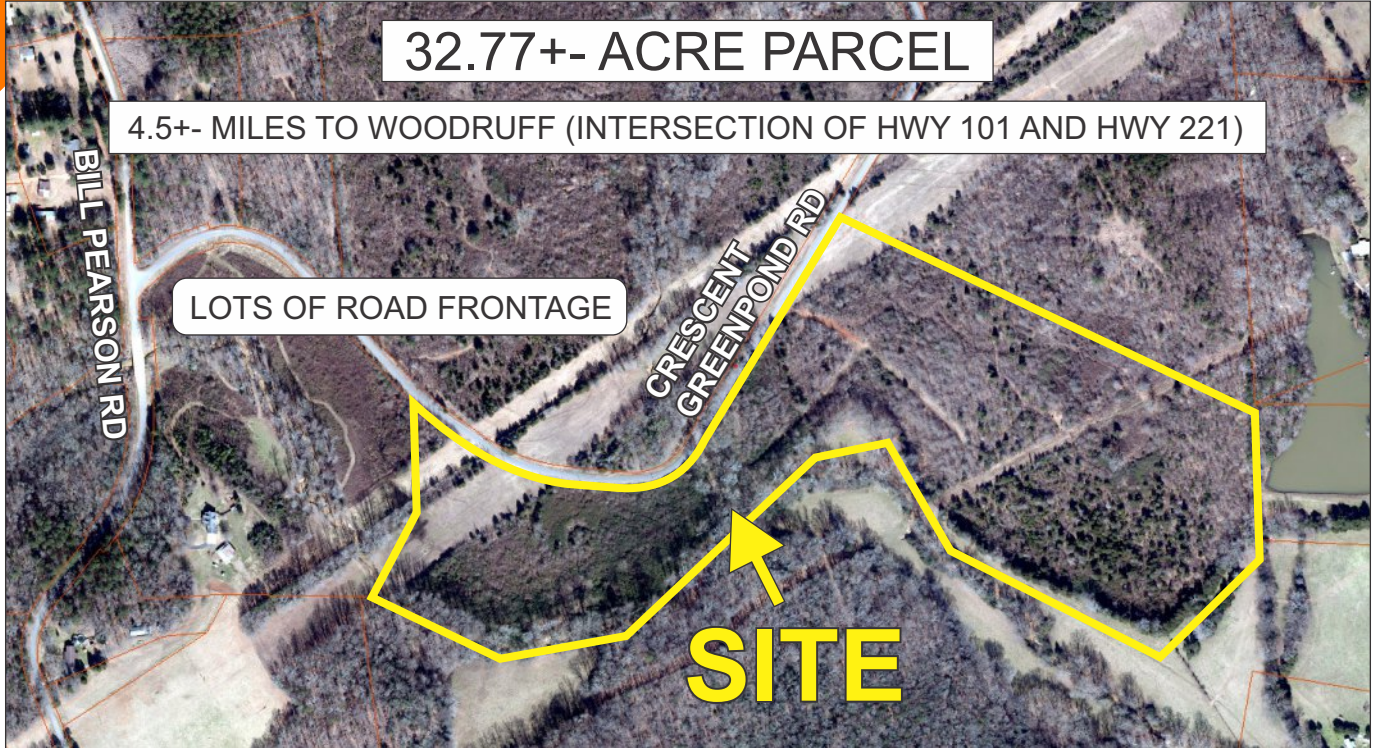
CRESCENT GREENPOND ROAD, WOODRUFF

32.77+- ACRE PARCEL

4.5+- MILES TO WOODRUFF (INTERSECTION OF HWY 101 AND HWY 221)

LOTS OF ROAD FRONTAGE

SITE



- PUBLIC WATER AVAILABLE (WOODRUFF ROEBUCK WATER DISTRICT)
- UNZONED IN SPARTANBURG COUNTY
- TAX MAP 4-12-00-018.02

\$150,000

FOR MORE INFORMATION CONTACT
CHUCK LANGSTON AT 864-230-4302
clangston@langston-black.com

LANGSTON BLACK
REAL ESTATE, INC.

P.O. BOX 2167
GREER, S.C. 29652
BUS: 864-848-9070

070

www.langston-black.com

Every effort has been made to ensure the accuracy of the enclosed data, but we assume no responsibility for errors. All conditions and pricing subject to change without notice.
(LANGSTON-BLACK SITE #070)



Taken from survey done in 2007. Every effort has been made to ensure the accuracy, but we assume no responsibility for errors.

