

# LANGSTON BLACK

REAL ESTATE, INC.

CALL CENTER  
CORPORATE HEADQUARTERS  
BANKING CENTER

400 MEMORIAL DRIVE EXT. @ HWY 29, GREER

## 8,810 TO 20,250 SF AVAILABLE

1ST FLOOR HAS DRIVE UP TELLER WINDOW WITH 6 LANES



PREVIOUSLY BB&T BRANCH AND SUPPORT OFFICE

AVAILABLE:

- 1ST FLOOR: 8,810+- SF
- 2ND FLOOR: 11,440+- SF

3RD FLOOR LEASED TO FAMILY  
DENTAL HEALTH

LOWER LEVEL LEASED TO  
LANGSTON BLACK REAL ESTATE

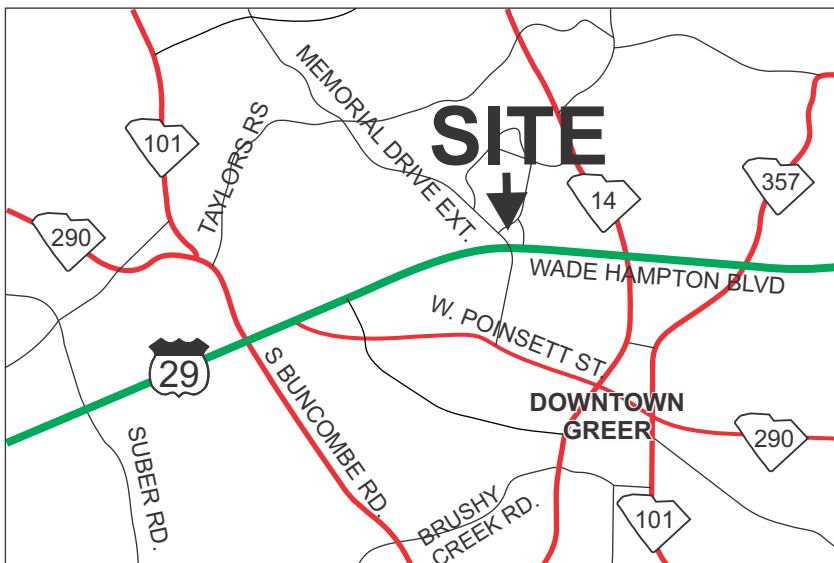
LEASE RATE: \$14.00/SF NNN

FOR MORE INFORMATION CONTACT  
CHUCK LANGSTON AT 864-230-4302  
clangston@langston-black.com

**LANGSTON BLACK**  
REAL ESTATE, INC.

P.O. BOX 2167  
GREER, S.C. 29652  
BUS: 864-848-9070

416



[www.langston-black.com](http://www.langston-black.com)

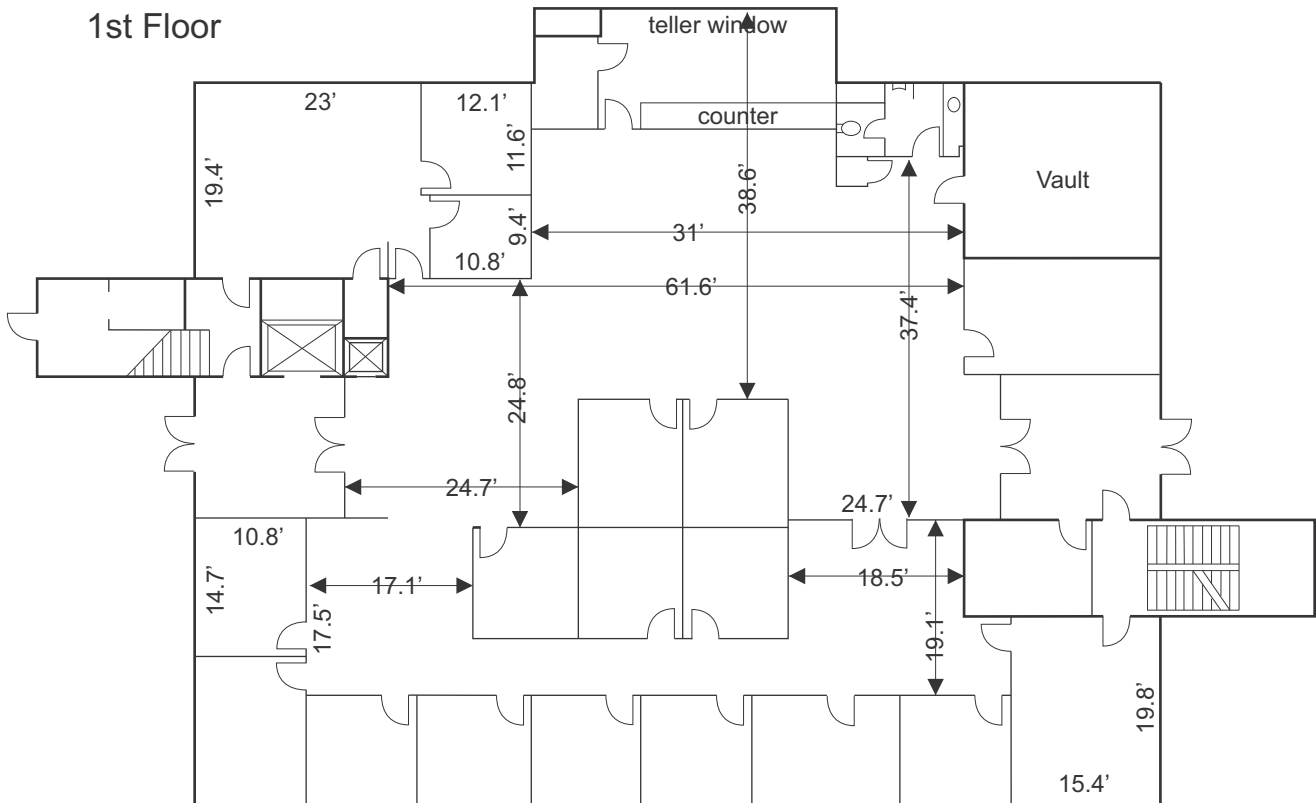
Every effort has been made to ensure the accuracy of the enclosed data, but we assume no responsibility for errors. All conditions and pricing subject to change without notice.  
(LANGSTON-BLACK SITE #416)



1ST FLOOR



1st Floor







STANDBY GENERATOR  
ENSURES BUILDING  
IS NEVER WITHOUT  
POWER



JUST BEHIND MCDONALDS WITH GREAT VIABILITY FROM HWY 29



TAX MAP G018.00-05-007.05  
ZONED CITY OF GREER C3

# SITE

