

LANGSTON BLACK

REAL ESTATE, INC.

SPACE FOR LEASE

HISTORIC TRAIN DEPOT

300 RANDALL ST.
DOWNTOWN GREER

LOCATED JUST OFF
POINSETT STREET
AND SC HWY 14
(MAIN STREET)

- GREAT HISTORIC ATMOSPHERE
- PLENTY OF PARKING
- HIGH CEILINGS
- ELECTRIC HEAT AND AIR

LEASE: \$1,000 PER MONTH

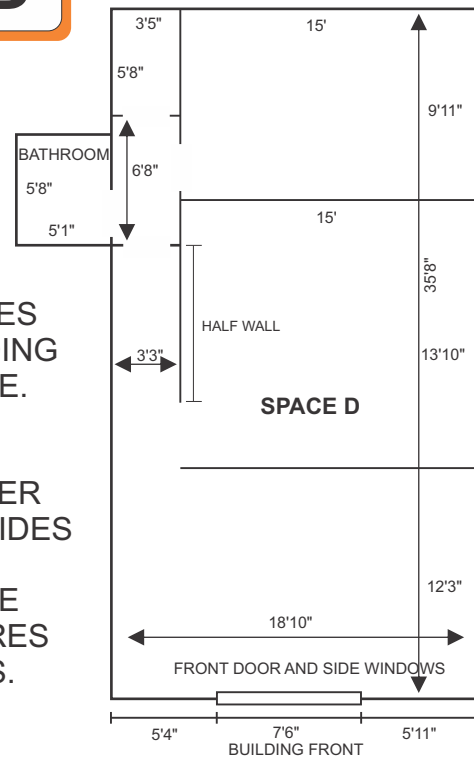


SUITE D

780+- SF

RENT INCLUDES:
WATER/
SEWER,
BLDG. TAXES
AND BUILDING
INSURANCE.

TENANT
PAYS POWER
AND PROVIDES
LIABILITY
INSURANCE
AND INSURES
CONTENTS.

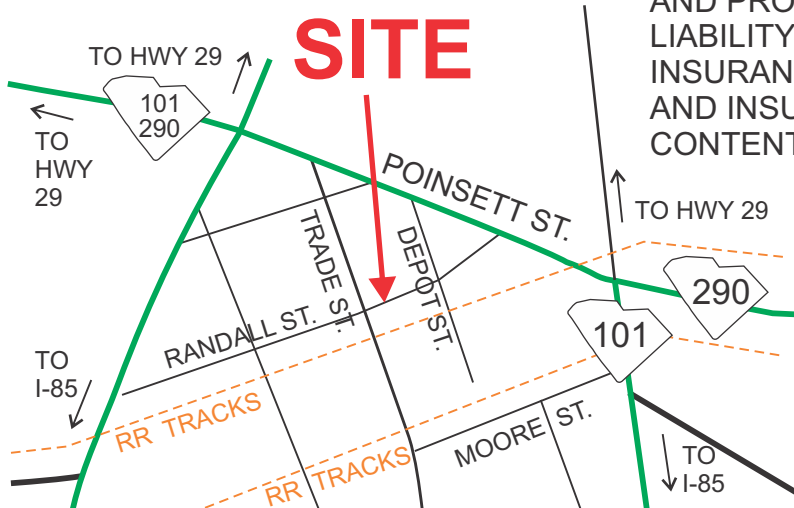


TAX MAP G020.00-04-013.00

LANGSTON BLACK
REAL ESTATE, INC.

P.O. BOX 2167
GREER, S.C. 29652
BUS: 864-848-9070

402



www.langston-black.com

Every effort has been made to ensure the accuracy of the enclosed data, but we assume no responsibility for errors. All conditions and pricing subject to change without notice.
(LANGSTON-BLACK SITE #402)

Downtown Greer



Greer Station (downtown Greer) has entered into a new era that has seen numerous new businesses open in the downtown area. With streetscape improvements, the construction of the city hall complex and park, restoration efforts on many buildings, and numerous events and festivals being held during the year, Greer Station has become a destination point. Visit the Greer Station web site at www.greerstation.com

