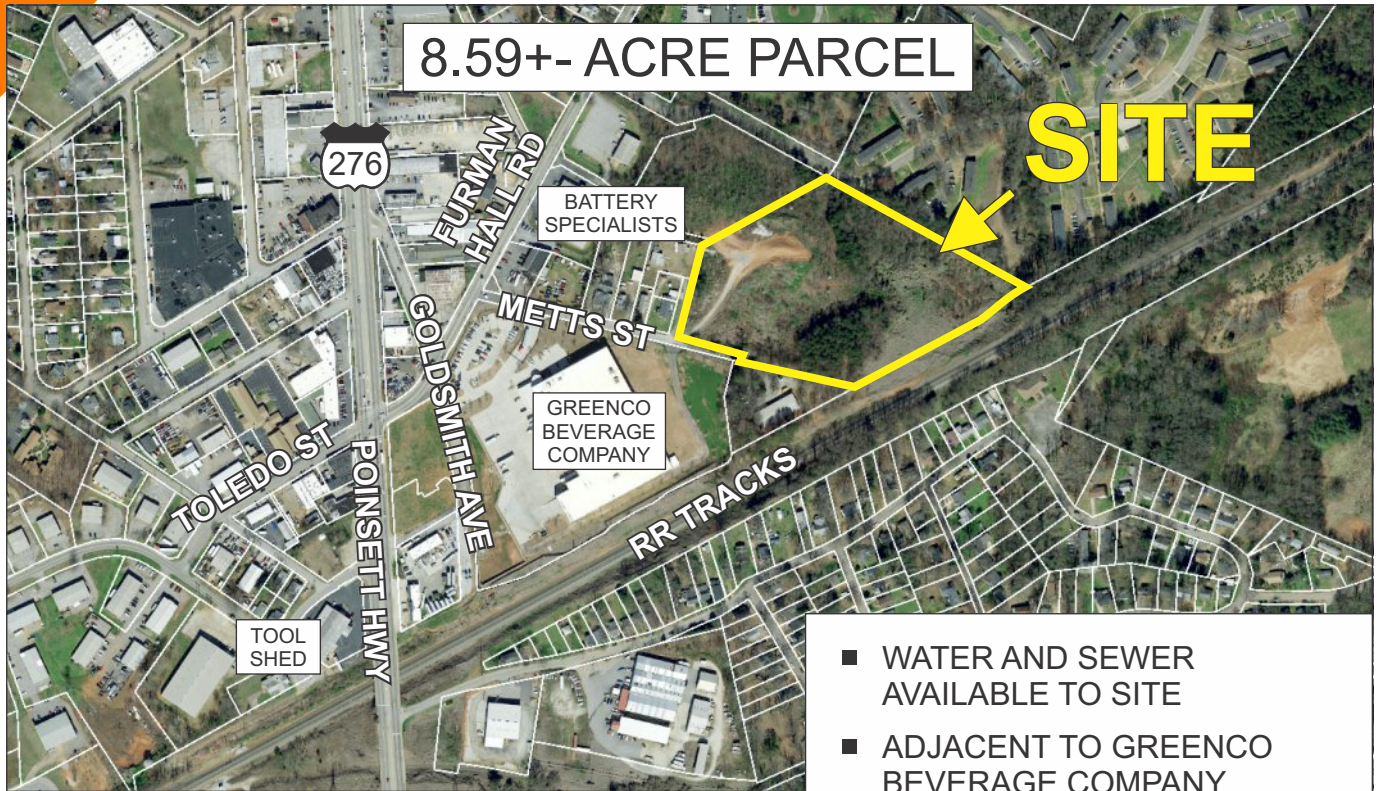
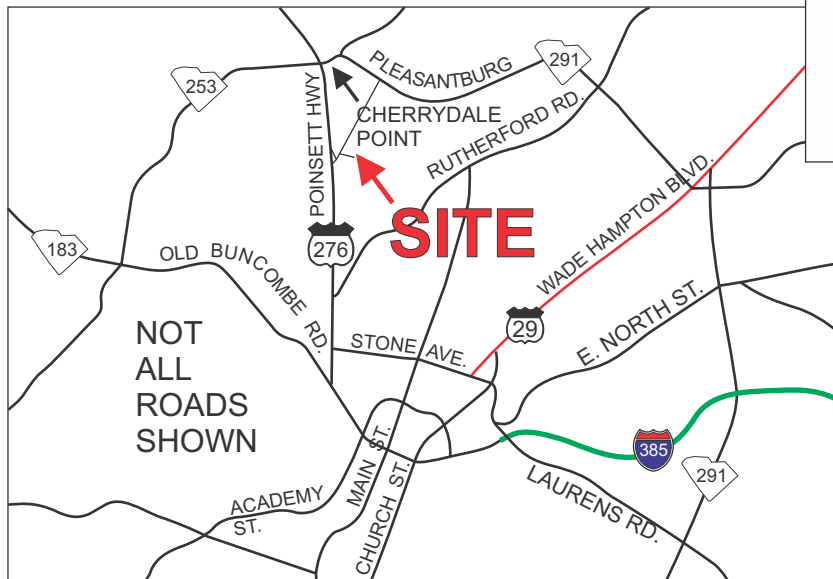


METTS STREET, GREENVILLE

8.59+- ACRE PARCEL



- WATER AND SEWER AVAILABLE TO SITE
- ADJACENT TO GREENCO BEVERAGE COMPANY
- CURRENTLY ZONED GREENVILLE COUNTY R-MHP
- TAX MAP 0174.04-01-004.07



\$446,680

FOR MORE INFORMATION CONTACT
RICK HAMMETT AT 864-313-9507
rhammett@langston-black.com

LANGSTON BLACK
REAL ESTATE, INC.

P.O. BOX 2167
GREER, S.C. 29652
BUS: 864-848-9070

047

www.langston-black.com

1.1+- MILE FROM THE INTERSECTION OF HWY 276 (POINSETT HWY) AND HWY 291 (NORTH PLEASANTBURG DR)

