

306 BENNETT CENTER DRIVE, GREER

5,970+- SF OFFICE



- JUST OFF OF W. POINSETT ST. AND CLOSE TO HWY 29
- LOCATED IN THE BENNETT CENTER OFFICE PARK
- ZONED CITY OF GREER OD
- TAX MAP G010.00-05-014.00

**SALES PRICE:** ~~\$620,000~~  
**REDUCED TO \$595,000**

**LEASE RATE: \$11.00/SF NNN**

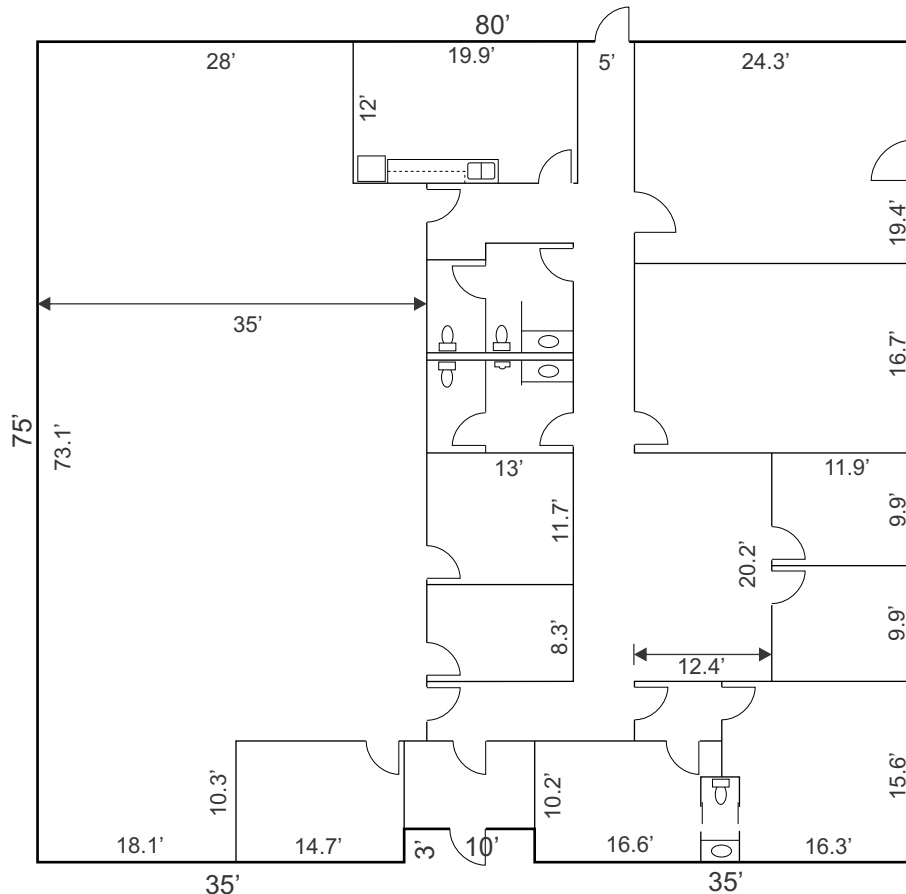
FOR MORE INFORMATION CONTACT  
CHUCK LANGSTON AT 864-230-4302  
clangston@langston-black.com

**LANGSTON BLACK**  
REAL ESTATE, INC.

P.O. BOX 2167  
GREER, S.C. 29652  
BUS: 864-848-9070

304

[www.langston-black.com](http://www.langston-black.com)



.7+- MILE FROM WADE HAMPTON BLVD. (HWY 29)  
 .3+- MILE FROM WEST POINSETT ST.

