

554 MEMORIAL DRIVE EXTENSION, GREER



Greer
Professional
Park

- SUITE B: 4,672+- SF UNFINISHED SPACE ON LOWER LEVEL
- SUITE C: 4,228+- SF ON MAIN LEVEL & 2ND FLOOR (521+- SF ON 2ND)
- SUITE D: 965+- SF ON MAIN LEVEL

AMPLE ON-SITE PARKING

BUILDING EXTERIOR RECENTLY PAINTED

IMPROVEMENTS MADE TO THE PARKING LOT AND ENTIRE OFFICE COMPLEX

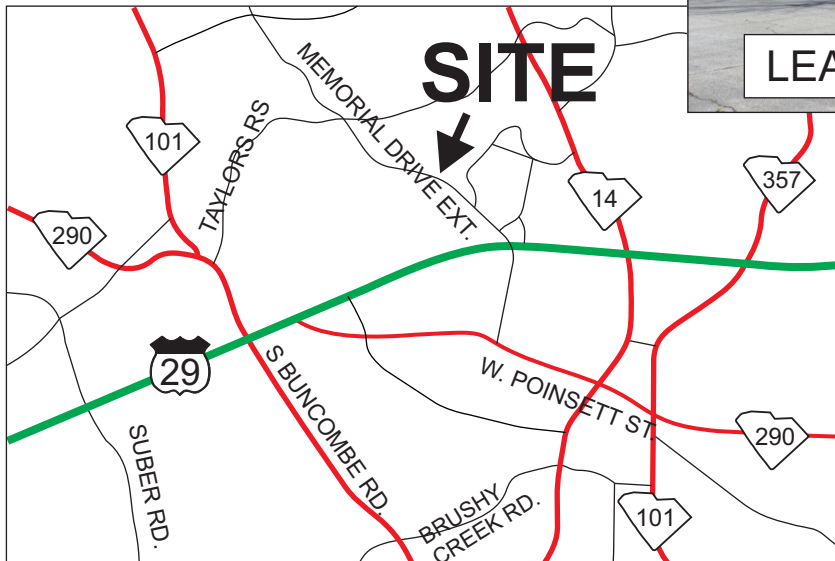
CONVIENTLY LOCATED 1/2+- MILE FROM WADE HAMPTON BLVD. (HWY 29)



[CLICK FOR 3D VISUAL TOUR](#)



LEASE RATE: \$10/SF NNN



FOR MORE INFORMATION CONTACT:

BRAD TOY, CCIM, AT 864-640-7429
btoy@langston-black.com

JIM GRIFFIN AT 864-593-3000
jgriffin@langston-black.com

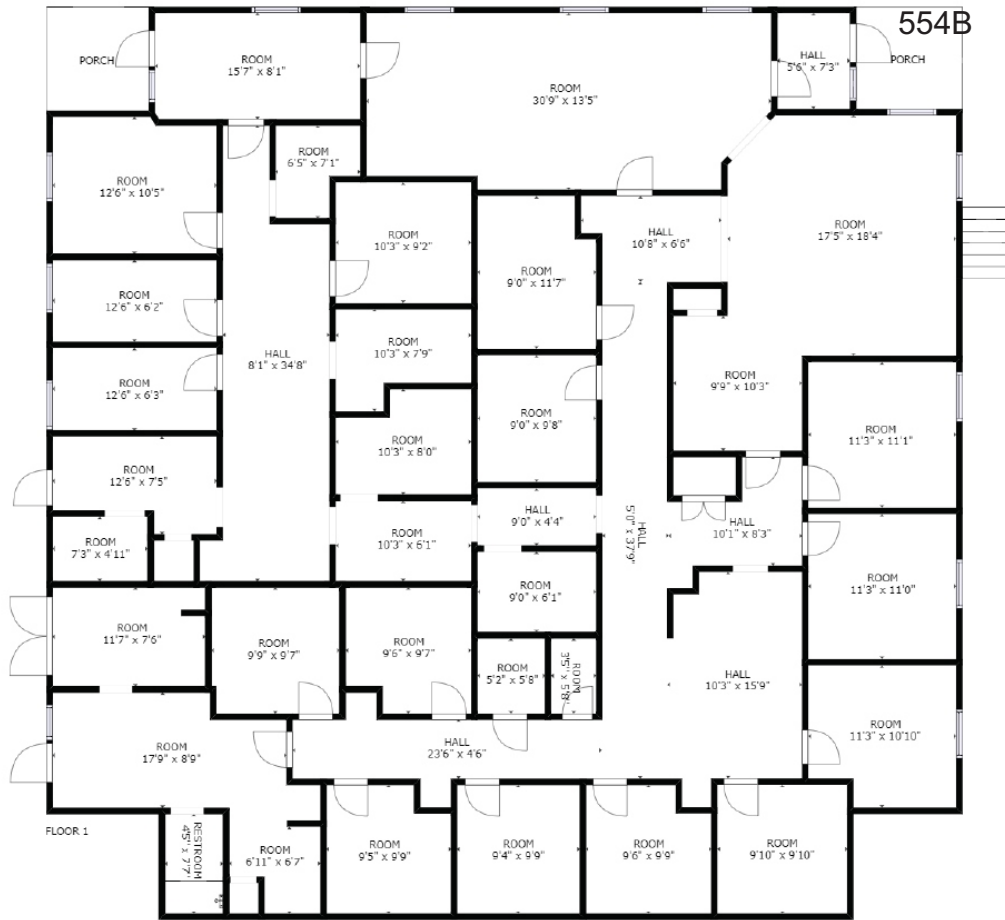
LANGSTON BLACK
REAL ESTATE, INC.

P.O. BOX 2167
GREER, S.C. 29652
BUS: 864-848-9070

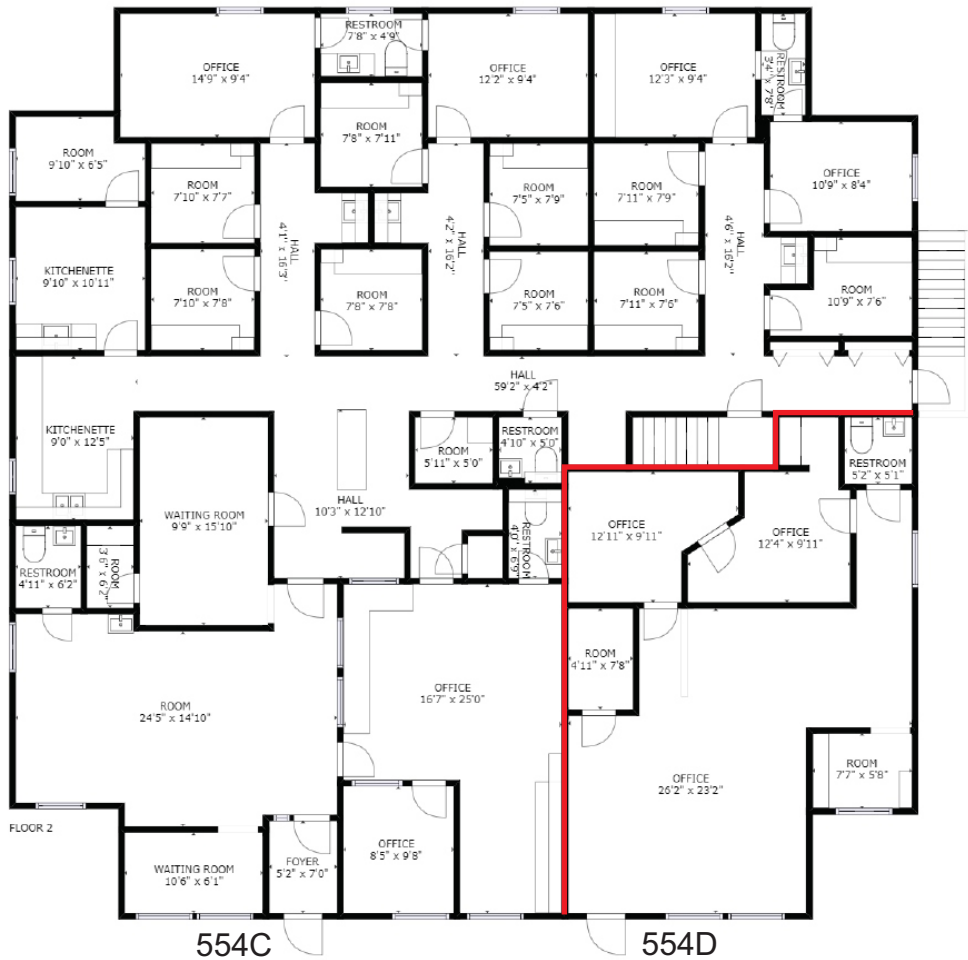
400.2

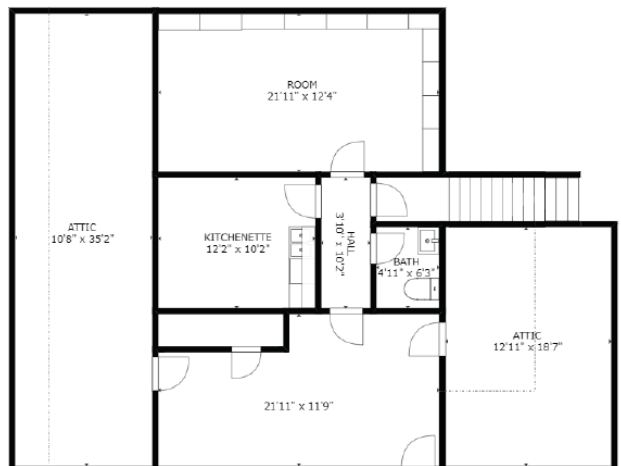
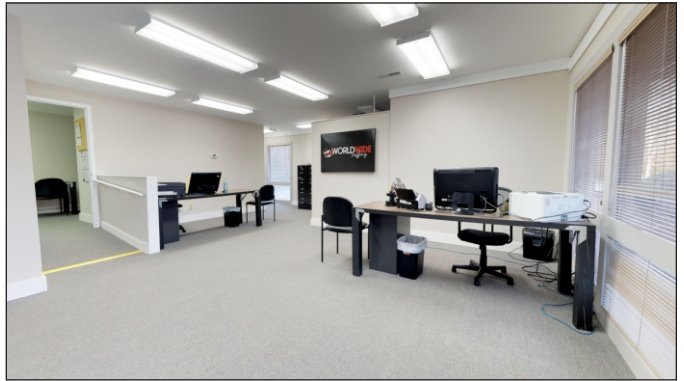
www.langston-black.com

554
MEMORIAL
DRIVE

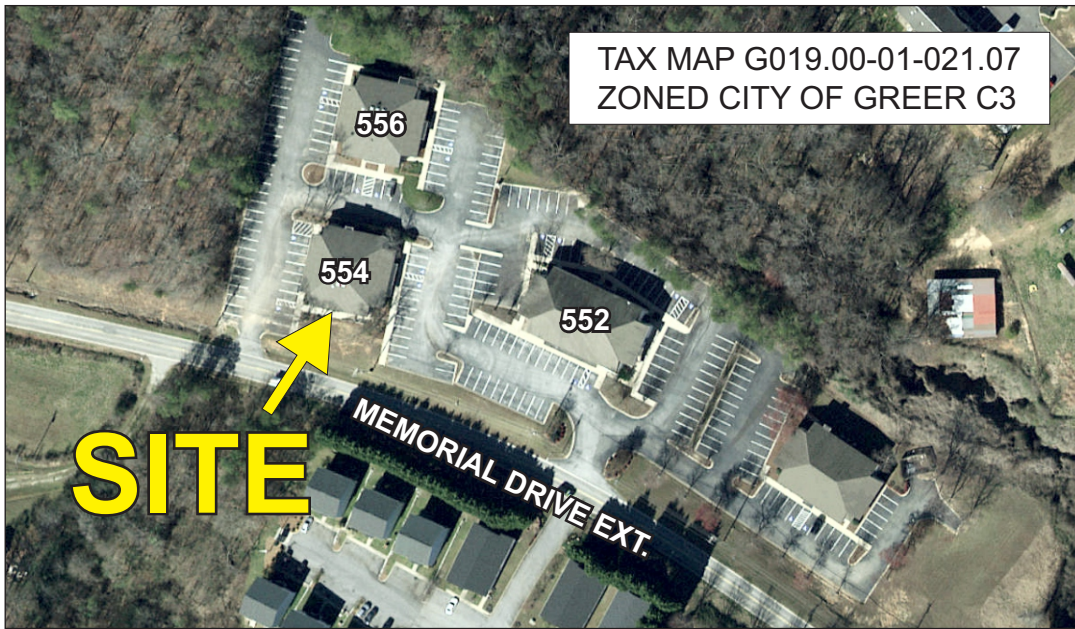


9,865+- sf total for building - 4,672+- sf per floor + 521+- sf on 2nd floor





UPSTAIRS SECTION OF 556D



0.5+- MILE FROM WADE HAMPTON BLVD. (HWY 29)

1.2+- MILES FROM THE INTERSECTION OF WADE HAMPTON BLVD. AND HWY 14

1.5+- MILES FROM THE INTERSECTION OF WADE HAMPTON BLVD. AND S. BUNCOMBE RD.

1.7+- MILES FROM DOWNTOWN GREER