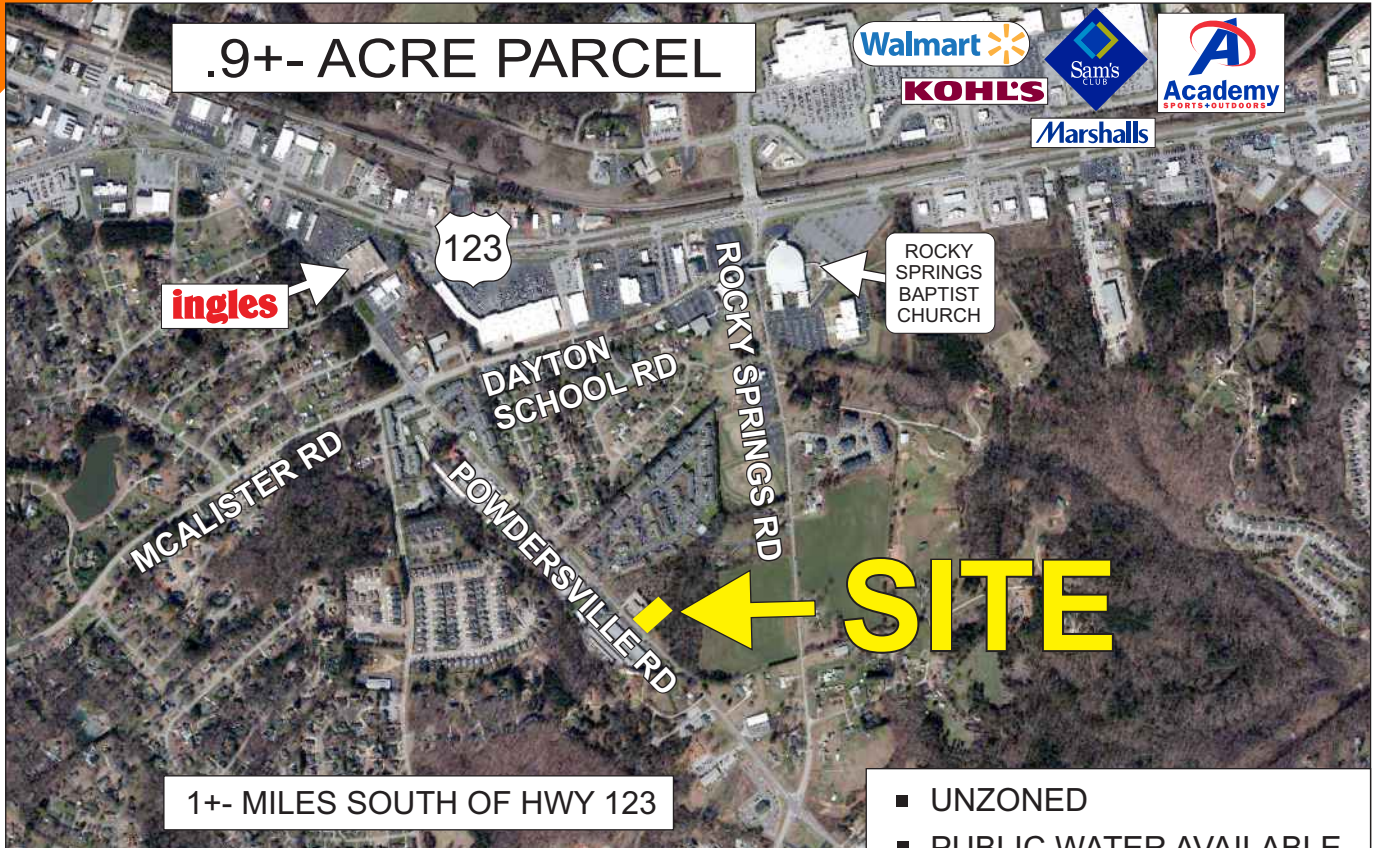


### POWDERSVILLE ROAD, EASLEY

.9+- ACRE PARCEL



1+- MILES SOUTH OF HWY 123

- UNZONED
- PUBLIC WATER AVAILABLE
- 155'+- FRONTAGE ON POWDERSVILLE ROAD

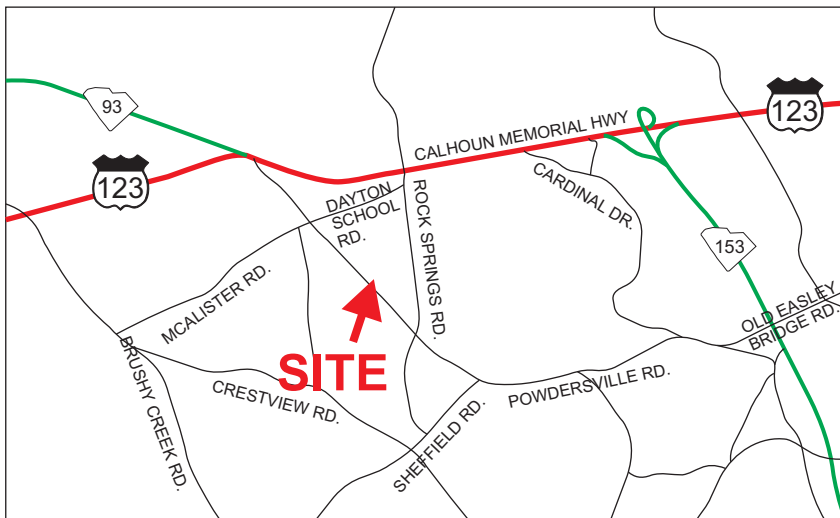
**\$125,000**

FOR MORE INFORMATION CONTACT  
JIM GRIFFIN AT 864-593-3000  
jgriffin@langston-black.com

**LANGSTON BLACK**  
REAL ESTATE, INC.

P.O. BOX 2167  
GREER, S.C. 29652  
BUS: 864-848-9070

135



[www.langston-black.com](http://www.langston-black.com)



PICKENS COUNTY TAX MAP 5038-06-39-7097