

# LANGSTON BLACK

REAL ESTATE, INC.

## LAND FOR SALE

### 8.38+- ACRE PARCEL

### NEW EASLEY HWY (HWY 123), GREENVILLE



JUST OFF OF WHITE HORSE RD. (HWY 25)  
375'+- FRONTAGE ON HWY 123  
ZONED GREENVILLE COUNTY S1  
WATER AND SEWER AVAILABLE



TAX MAP 0240.03-01-027.04

**SALES PRICE: ~~\$495,000~~  
REDUCED TO \$370,000**

FOR MORE INFORMATION CONTACT  
JIM GRIFFIN AT 864-593-3000  
jgriffin@langston-black.com

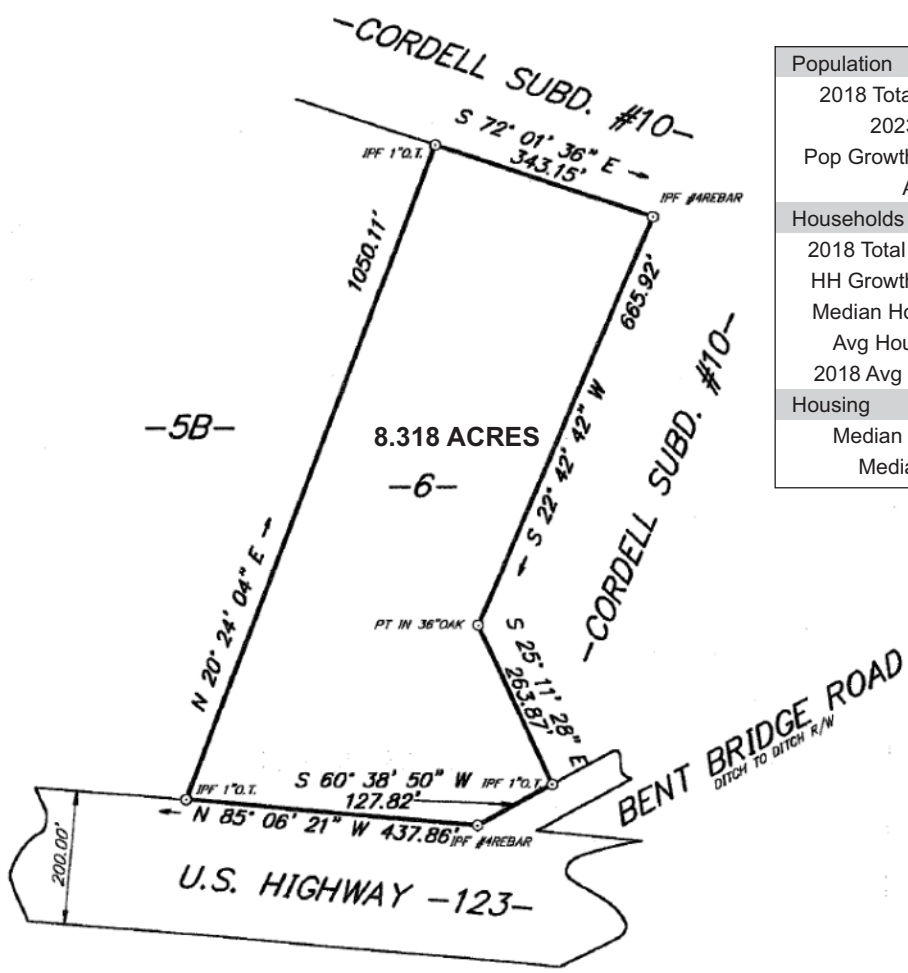
**LANGSTON BLACK**  
REAL ESTATE, INC.

P.O. BOX 2167  
GREER, S.C. 29652  
BUS: 864-848-9070

034

[www.langston-black.com](http://www.langston-black.com)

Every effort has been made to ensure the accuracy of the enclosed data, but we assume no responsibility for errors. All conditions and pricing subject to change without notice.  
(LANGSTON-BLACK SITE #034)



Population	1 Mile	3 Miles	5 Mile
2018 Total Population:	5,314	50,658	121,709
2023 Population:	5,683	54,665	131,009
Pop Growth 2018-2023:	6.94%	7.91%	7.64%
Average Age:	38.20	38.60	38.50
Households			
2018 Total Households:	2,063	19,979	48,904
HH Growth 2018-2023:	7.03%	7.95%	7.65%
Median Household Inc:	\$36,795	\$33,956	\$39,098
Avg Household Size:	2.50	2.50	2.40
2018 Avg HH Vehicles:	2.00	2.00	2.00
Housing			
Median Home Value:	\$67,856	\$90,301	\$139,181
Median Year Built:	1962	1965	1966