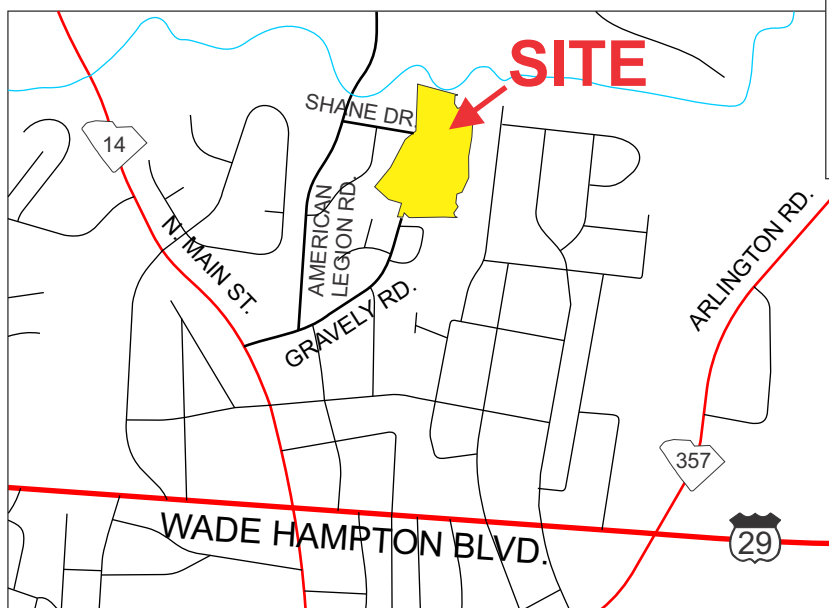
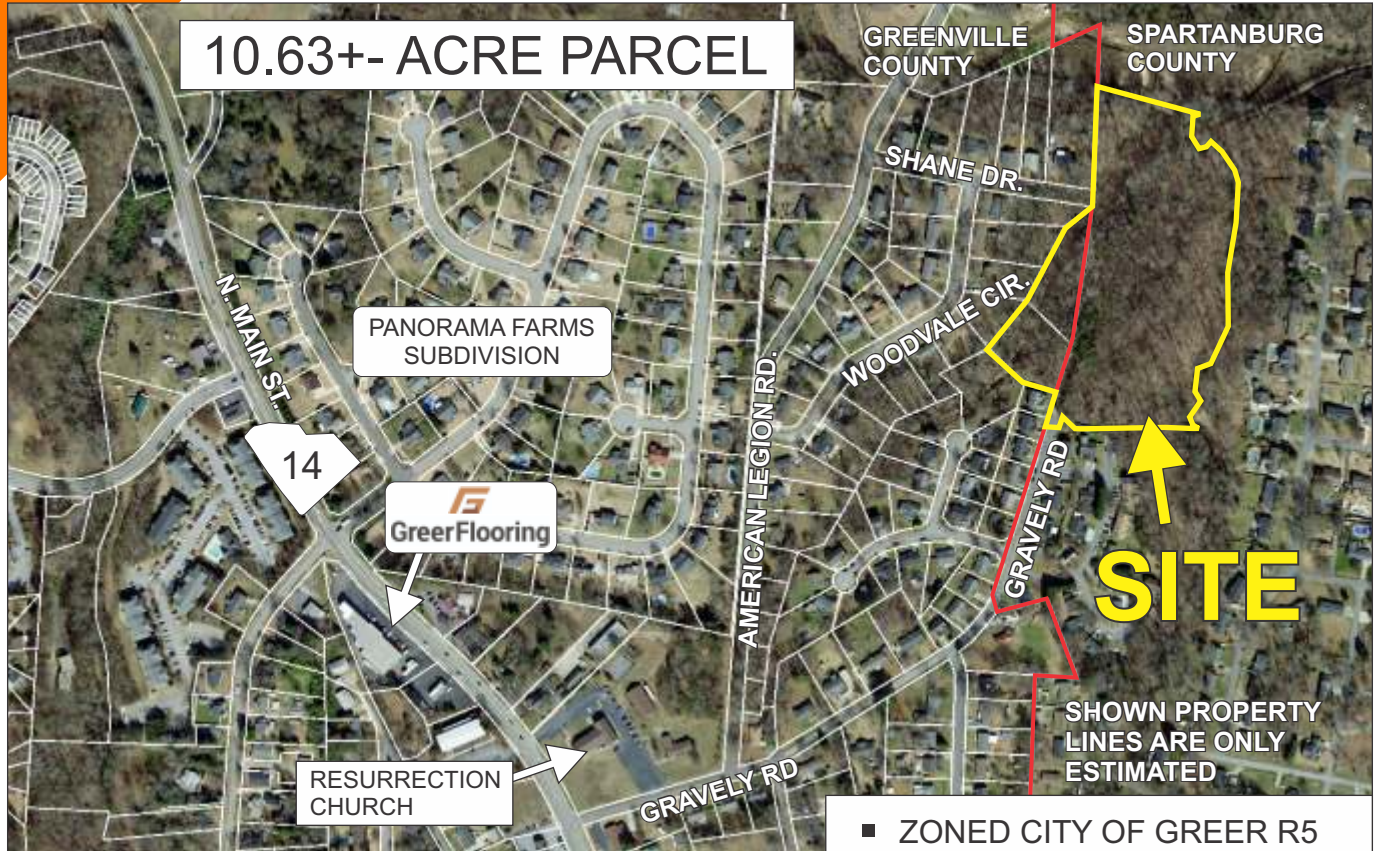


LAND FOR SALE

GRAVELY ROAD, GREER



- ZONED CITY OF GREER R5
- ALL UTILITIES AVAILABLE
- STAKEOUT PLAN AVAILABLE FOR PROPOSED 31 LOT SUBDIVISION

\$225,000

FOR MORE INFORMATION CONTACT
CHUCK LANGSTON AT 864-230-4302
clangston@langston-black.com

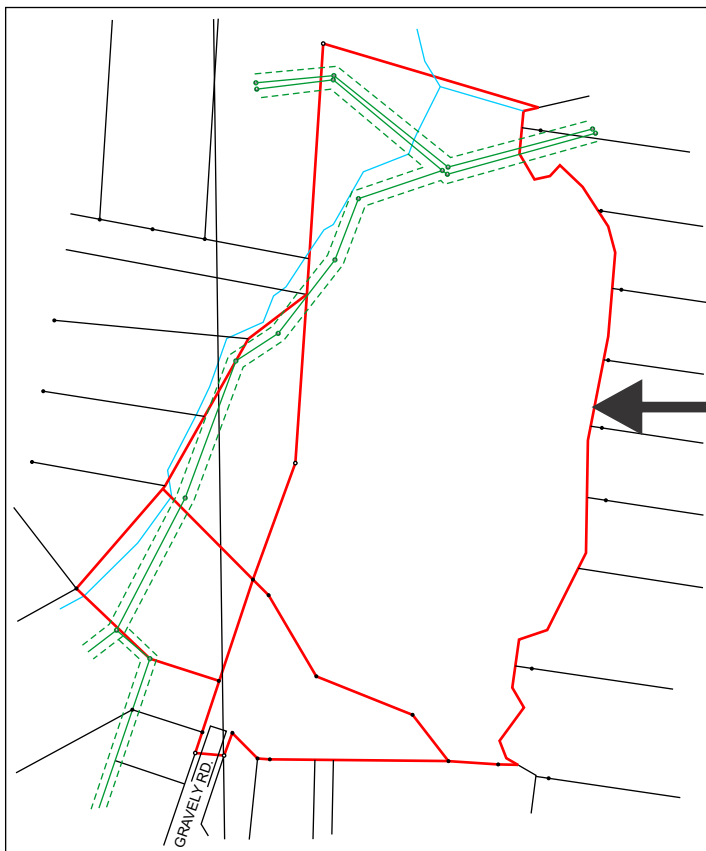
LANGSTON BLACK

REAL ESTATE, INC.

P.O. BOX 2167
GREER, S.C. 29652
BUS: 864-848-9070

027

www.langston-black.com



GREENVILLE COUNTY TAX MAP
G018.00-02-009.33 AND 009.34

SPARTANBURG COUNTY TAX MAP
9-03-01-020.00 AND 020.01

G018.00-02-009.34: 0.85 ACRE
 G018.00-02-009.33: 0.93 ACRE
 9-03-01-020.00: 7.93 ACRES
 9-03-01-020.01: 0.92 ACRE
 FROM SURVEY DONE 9/18/1999

- 0.4+- MILE FROM HWY 14 (NORTH MAIN STREET)
- 0.7+- MILE FROM THE INTERSECTION OF HWY 14 (NORTH MAIN ST.) AND WADE HAMPTON BLVD. (HWY 29)
- 1.4+- MILES FROM DOWNTOWN GREER