

LANGSTON BLACK

REAL ESTATE, INC.

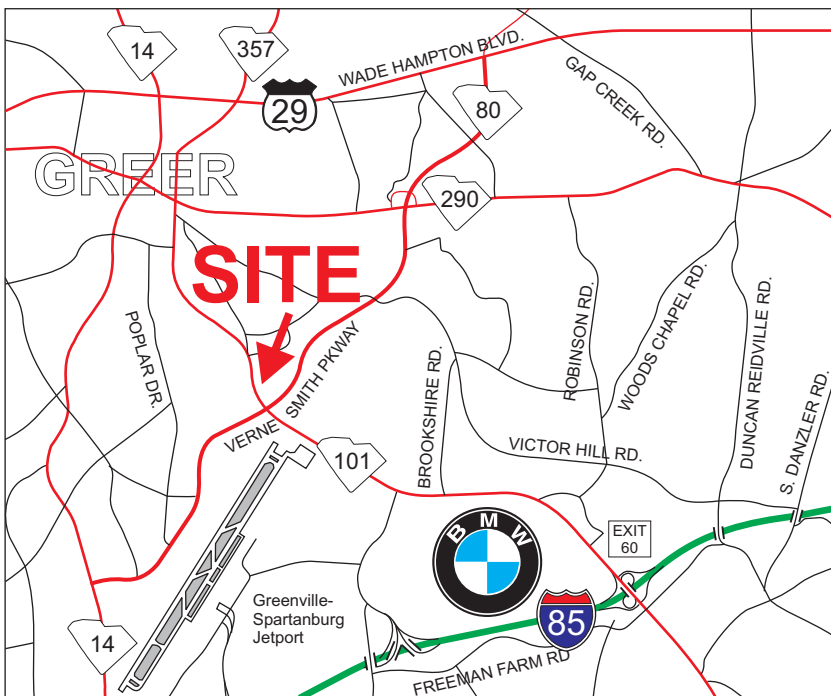
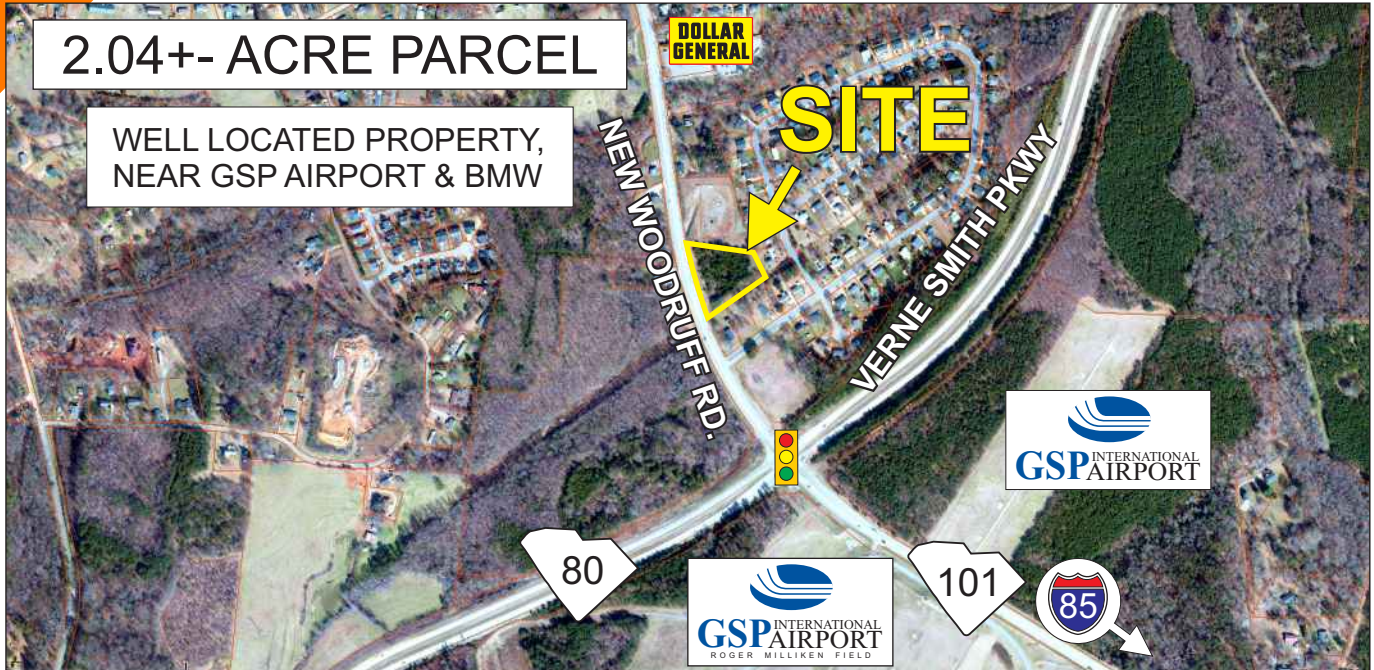
LAND FOR SALE

CLOSE TO THE INTERSECTION OF HWY 101
AND VERNE SMITH PARKWAY (HWY 80)

NEW WOODRUFF RD. (HWY 101), GREER

2.04+- ACRE PARCEL

WELL LOCATED PROPERTY,
NEAR GSP AIRPORT & BMW



- ALL UTILITIES AVAILABLE
- ZONED CITY OF GREER C2
- TAX MAP 9-05-02-008.06

\$150,000

**OWNER WILL CONSIDER
ALL OFFERS**

FOR MORE INFORMATION CONTACT
JIM GRIFFIN AT 864-593-3000
jgriffin@langston-black.com

LANGSTON BLACK
REAL ESTATE, INC.

P.O. BOX 2167
GREER, S.C. 29652
BUS: 864-848-9070

011

www.langston-black.com

Every effort has been made to ensure the accuracy of the enclosed data, but we assume no responsibility for errors. All conditions and pricing subject to change without notice.
(LANGSTON-BLACK SITE #011)

