

LAND FOR SALE

ON A SIGNALIZED INTERSECTION

700 & 702 POINSETT HWY, GREENVILLE

.904+- ACRE PARCEL



- TAX MAP 0175.00-01-008.00
- ALL UTILITIES AVAILABLE
- ZONED GREENVILLE COUNTY C2
- TWO BUILDING ON THE PROPERTY

\$599,000

FOR MORE INFORMATION CONTACT
BRAD TOY, CCIM, AT 864-640-7429
btoy@langston-black.com

Langston Black
REAL ESTATE, INC.

P.O. BOX 2167
GREER, S.C. 29652
BUS: 864-848-9070

010

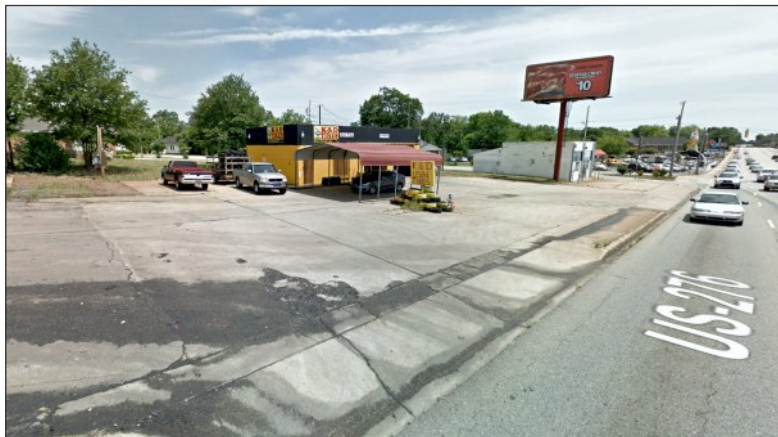
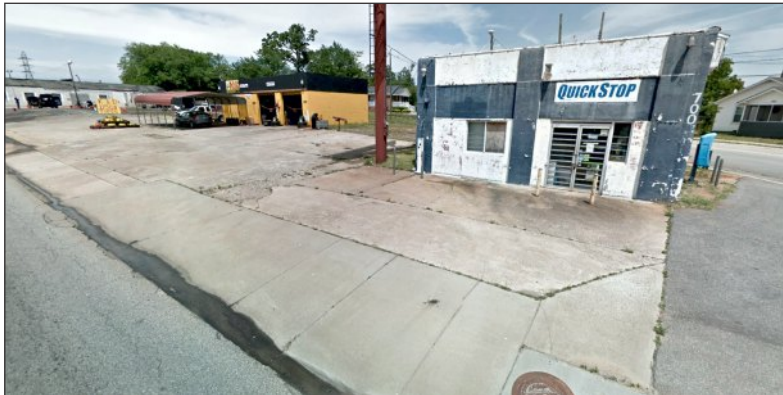


www.langston-black.com

LESS THAN 1 MILE FROM FROM CHERRYDALE POINT



2015 POINSETT HWY TRAFFIC COUNT: 24,700 VPD



RADIUS	1 MILE	3 MILE	5 MILE
2016 EST. POPULATION	9,430	72,556	154,658
2016 AVG. HH INCOME	\$50,753	\$50,283	\$57,980