

### LAURENS ROAD, GREENVILLE



- PORTION OF TAX MAP 0266.00-01-001.13 & 0266.00-01-322.01
- ZONED CITY OF GREENVILLE C3
- ALL UTILITIES AVAILABLE

**SALE PRICE: \$650,000**

FOR MORE INFORMATION,  
INCLUDING LEASE RATE,  
CONTACT BRAD TOY AT  
864-640-7429  
btoy@langston-black.com

**LANGSTON BLACK**  
REAL ESTATE, INC.

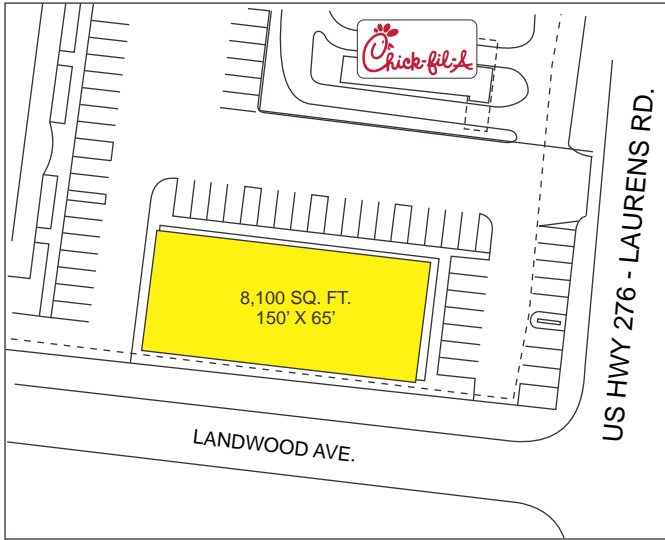
P.O. BOX 2167  
GREER, S.C. 29652  
BUS: 864-848-9070

458



[www.langston-black.com](http://www.langston-black.com)

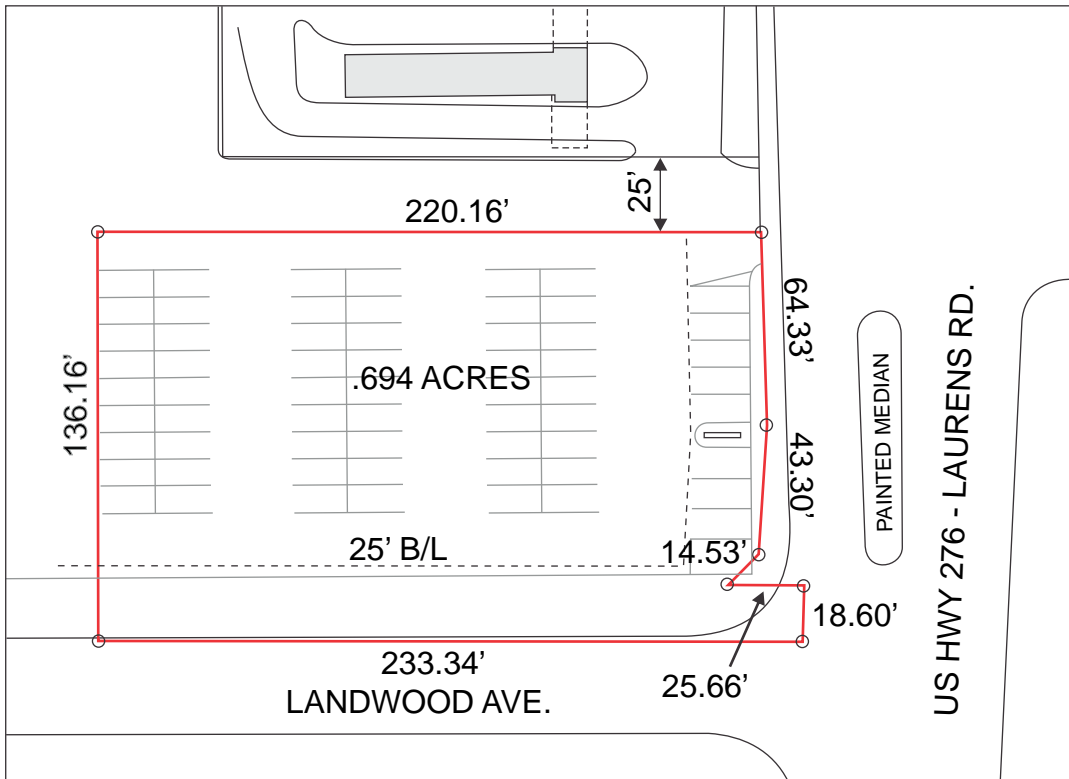
## TWO POSSIBLE BUILDING CONFIGERATIONS



LAYOUT A



LAYOUT B



## DEMOGRAPHIC INFORMATION

RADIUS	1 MILE	3 MILE	5 MILE
2010 TOTAL POPULATION	6,504	60,015	155,884
2007 DAYTIME POPULATION	14,531	89,105	189,531
2010 AVG. HH INCOME	\$47,310	\$61,912	\$58,996

### 2010 AVERAGE DAILY TRAFFIC

PLEASANTBURG DRIVE	21,200 VPD
LAURENS ROAD	22,600 VPD