

# LANGSTON BLACK

REAL ESTATE, INC.

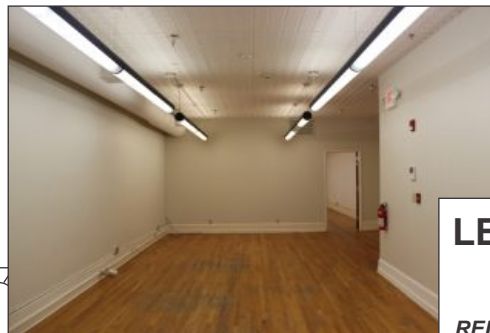
## OFFICE SPACE FOR LEASE

DOWNTOWN GREENVILLE

241-A NORTH MAIN STREET



2,400+/- SF



LOCATED  
ACROSS FROM  
THE HYATT

SECOND  
STORY  
SPACE

ACCESSED  
VIA EXTERIOR  
STAIRS FROM  
N. MAIN ST.

LARGE  
WINDOWS  
OVERLOOKING  
N. MAIN ST.

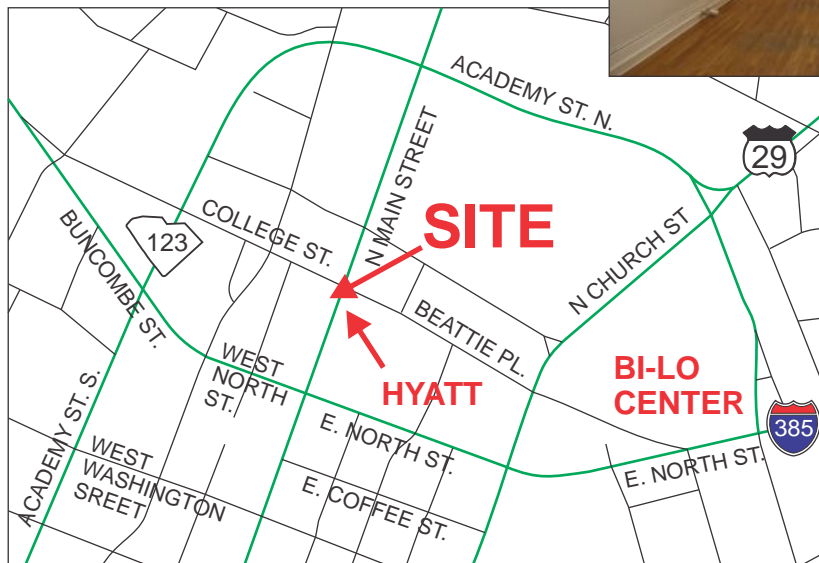
MAIN FLOOR  
OCCUPIED BY  
OFFICES OF  
DARK CORNER  
DISTILLERY

LEASE RATE:

~~\$14.50/SF~~

REDUCED TO **\$12.50**

NNN LEASE TERMS



FOR MORE INFORMATION  
CONTACT PHILIP WHISNANT  
AT 864-551-3524  
philip@langston-black.com

**LANGSTON BLACK**  
REAL ESTATE, INC.

P.O. BOX 2167  
GREER, S.C. 29652  
BUS: 864-848-9070

434

[www.langston-black.com](http://www.langston-black.com)

Every effort has been made to ensure the accuracy of the enclosed data, but we assume no responsibility for errors. All conditions and pricing subject to change without notice.  
(LANGSTON-BLACK SITE #434)



TAX MAP 0002.00-06-028.00  
ZONED CITY OF GREENVILLE C4

