

# LANGSTON BLACK

REAL ESTATE, INC.

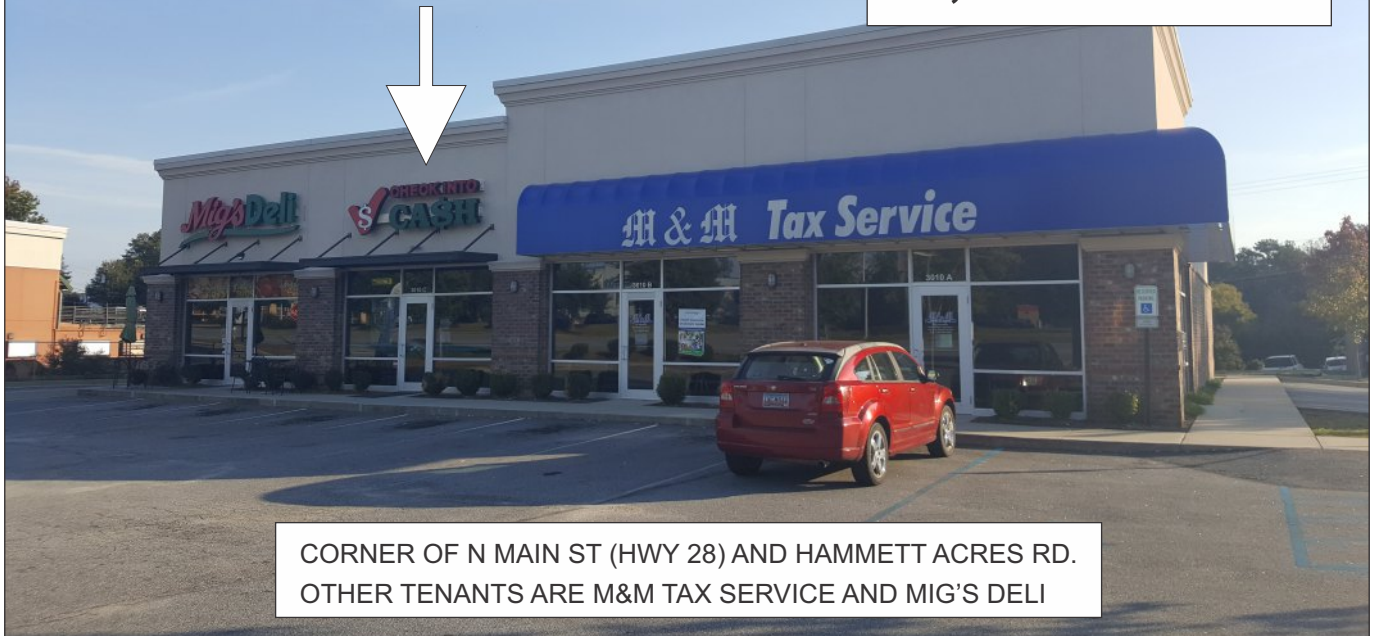
## SPACE FOR LEASE

### CLOSE TO ANDERSON MALL

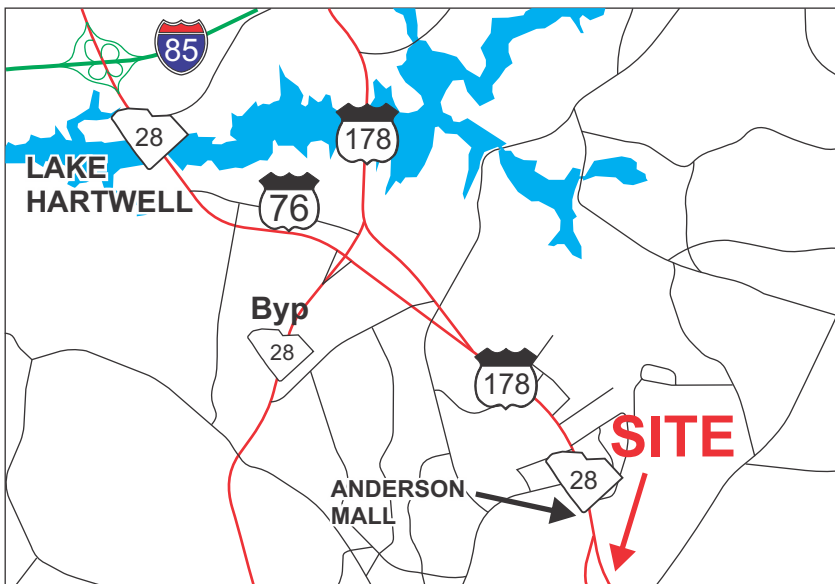
3010 NORTH MAIN STREET (HWY 28), ANDERSON, SC

## AVAILABLE

## 1,276+- SF



CORNER OF N MAIN ST (HWY 28) AND HAMMETT ACRES RD.  
OTHER TENANTS ARE M&M TAX SERVICE AND MIG'S DELI



LEASE RATE:

## \$16/SF NNN

NNN IS \$3.50/SF

FOR MORE INFORMATION CONTACT:

BRAD TOY, CCIM, AT 864-640-7429

btoy@langston-black.com

R.W. ABEL AT 864-729-3304

rabel@langston-black.com

## LANGSTON BLACK

REAL ESTATE, INC.

P.O. BOX 2167

GREER, S.C. 29652

BUS: 864-848-9070

426

[www.langston-black.com](http://www.langston-black.com)

Every effort has been made to ensure the accuracy of the enclosed data, but we assume no responsibility for errors. All conditions and pricing subject to change without notice.

(LANGSTON-BLACK SITE #426)





ANDERSON COUNTY TAX MAP 12213-02001

RADIUS	1 MILE	3 MILE	5 MILE
2016 TOTAL POPULATION	6,020	39,147	70,996
2016 AVG. HH INCOME	\$57,966	\$49,991	\$50,587