

# LANGSTON BLACK

REAL ESTATE, INC.

## TRUCK SHOP FOR LEASE

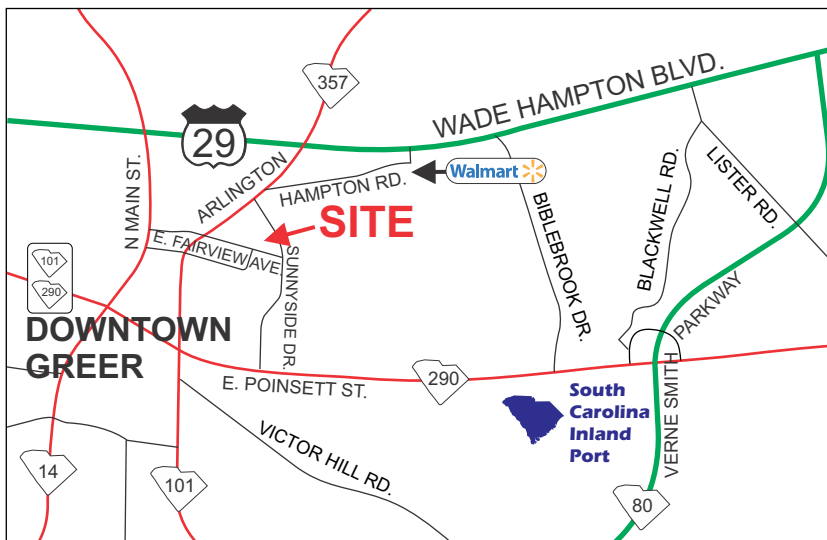
507 EAST FAIRVIEW AVENUE, GREER

4,550+- SF SHOP BUILDING  
ON 1.77+- ACRE PARCEL

(4) 12'x15' & (2) 12'x14'  
DRIVE-IN DOORS



- ZONED CITY OF GREER C2
- PUBLIC WATER AND SEWER
- TAX MAP 9-03-14-029.00



LEASE RATE:  
**\$2,500/MO. NNN**

FOR MORE INFORMATION CONTACT  
CHUCK LANGSTON AT 864-230-4302  
clangston@langston-black.com

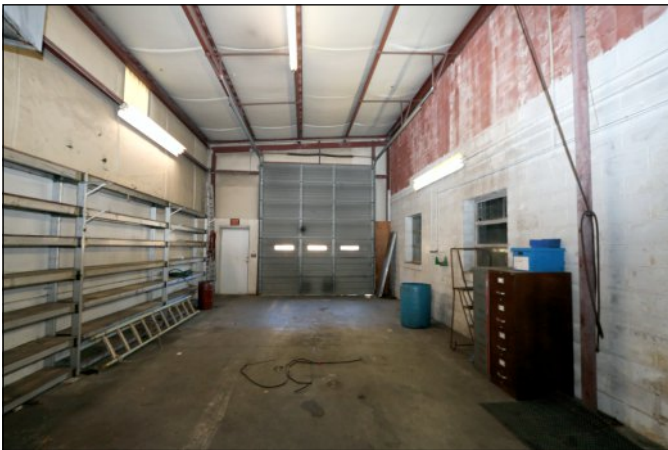
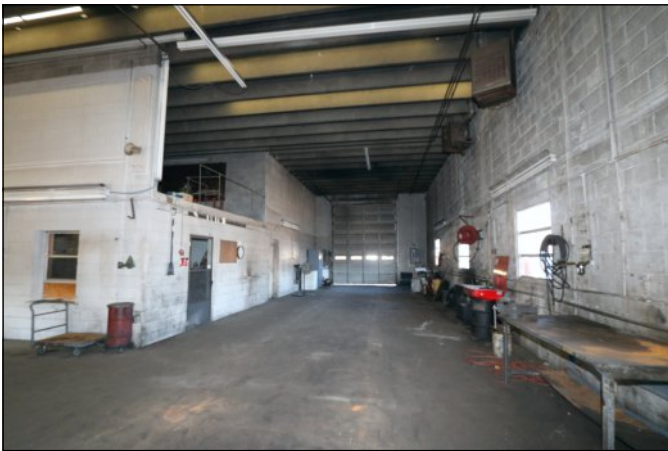
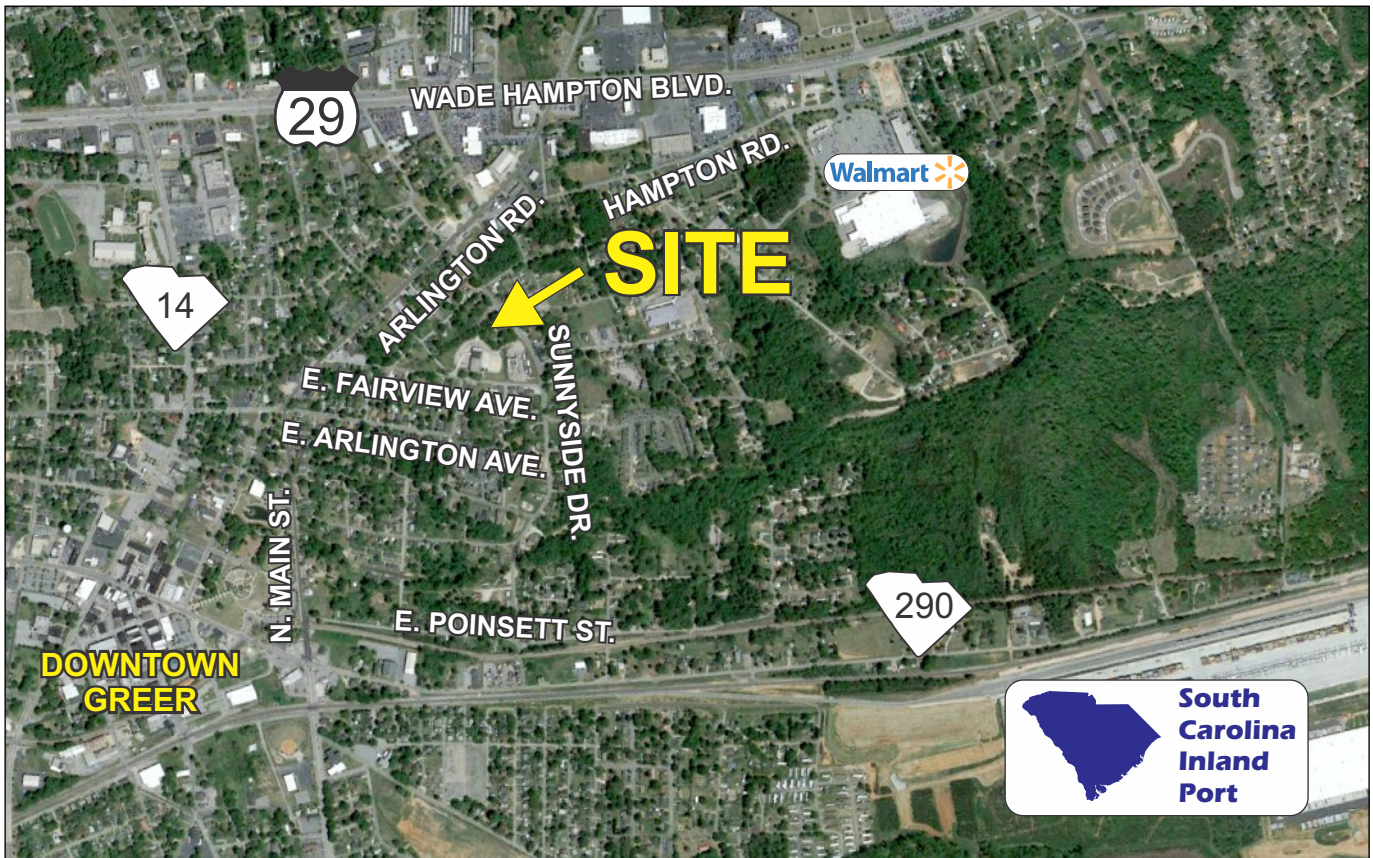
**LANGSTON BLACK**  
REAL ESTATE, INC.

P.O. BOX 2167  
GREER, S.C. 29652  
BUS: 864-848-9070

425

[www.langston-black.com](http://www.langston-black.com)

Every effort has been made to ensure the accuracy of the enclosed data, but we assume no responsibility for errors. All conditions and pricing subject to change without notice.  
(LANGSTON-BLACK SITE #425)



- .2+- MILE FROM ARLINGTON RD. (HWY 357)
- .5+- MILE FROM NORTH MAIN STREET (HWY 14)
- .7+- MILE FROM WADE HAMPTON BLVD. (HWY 29)
- .7+- MILE FROM POINSETT STREET (HWY 101 & HWY 290)
- 2.7+- MILES FROM SC INLAND PORT

- FAR RIGHT AND FAR LEFT BAYS ALLOW DRIVE THROUGH ACCESS
- SERVICE BAY CEILING HEIGHTS: 15' AND 17'
- 12' X 60' COVERED AREA ALONG SIDE OF BUILDING