

# LANGSTON BLACK

REAL ESTATE, INC.

## SPACE FOR LEASE

### HISTORIC TRAIN DEPOT

300 RANDALL ST.  
DOWNTOWN GREER

LOCATED JUST OFF  
POINSETT STREET  
AND SC HWY 14  
(MAIN STREET)

- GREAT HISTORIC ATMOSPHERE
- PLENTY OF PARKING
- HIGH CEILINGS
- ELECTRIC HEAT AND AIR

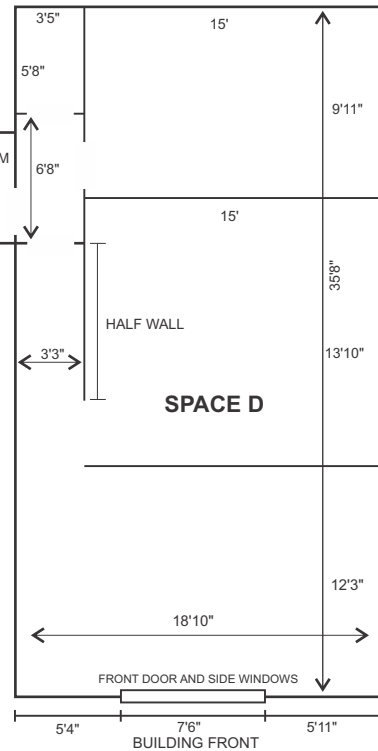
LEASE: \$1,000 PER MONTH

### SUITE D

780+- SF

RENT INCLUDES:  
WATER/  
SEWER,  
BLDG. TAXES  
AND BUILDING  
INSURANCE.

TENANT  
PAYS POWER  
AND PROVIDES  
LIABILITY  
INSURANCE  
AND INSURES  
CONTENTS.

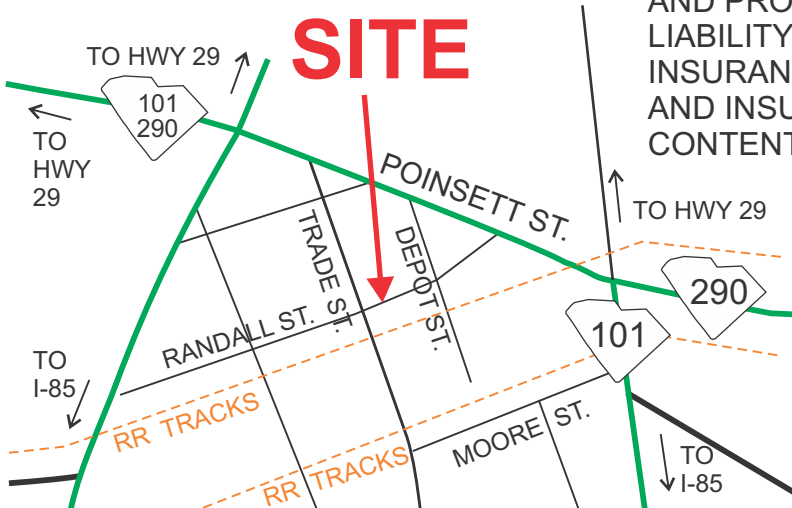


TAX MAP G020.00-04-013.00

**LANGSTON BLACK**  
REAL ESTATE, INC.

P.O. BOX 2167  
GREER, S.C. 29652  
BUS: 864-848-9070

416D



[www.langston-black.com](http://www.langston-black.com)

Every effort has been made to ensure the accuracy of the enclosed data, but we assume no responsibility for errors. All conditions and pricing subject to change without notice.  
(LANGSTON-BLACK SITE #416D)

# Downtown Greer



Greer Station (downtown Greer) has entered into a new era that has seen numerous new businesses open in the downtown area. With streetscape improvements, the construction of the city hall complex and park, restoration efforts on many buildings, and numerous events and festivals being held during the year, Greer Station has become a destination point. Visit the Greer Station web site at [www.greerstation.com](http://www.greerstation.com)