

### HISTORIC DEPOT BUILDING

300 RANDALL ST.  
DOWNTOWN GREER

LOCATED JUST OFF  
POINSETT STREET  
AND SC HWY 14  
(MAIN STREET)



**SUITE D**

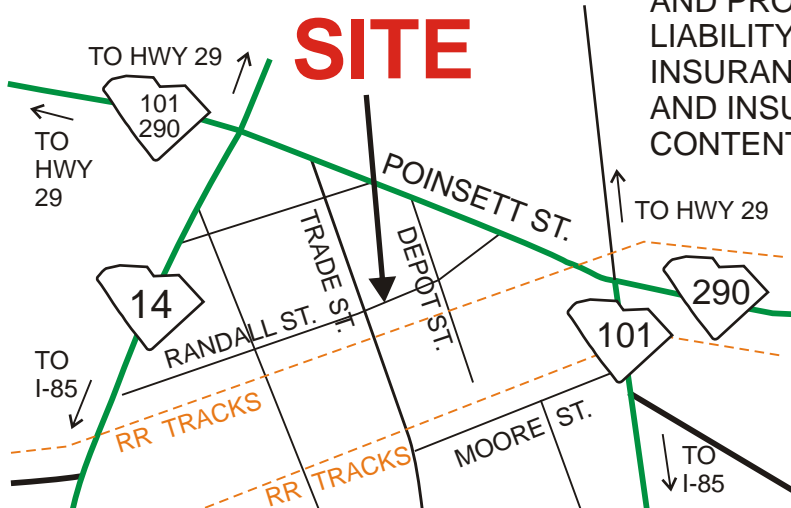
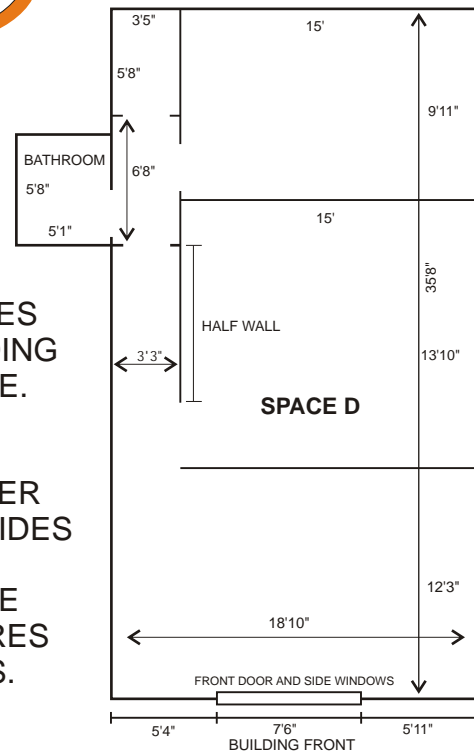
- GREAT HISTORIC ATMOSPHERE
- PLENTY OF PARKING
- HIGH CEILINGS
- ELECTRIC HEAT AND AIR

**750+- SF**

RENT INCLUDES:  
WATER/  
SEWER,  
BLDG. TAXES  
AND BUILDING  
INSURANCE.

TENANT  
PAYS POWER  
AND PROVIDES  
LIABILITY  
INSURANCE  
AND INSURES  
CONTENTS.

LEASE: \$750 PER MONTH



**LANGSTON BLACK**  
REAL ESTATE, INC.

P.O. BOX 2167  
GREER, S.C. 29652  
BUS: 864-848-9070  
FAX: 864-879-6696

405D

[www.langston-black.com](http://www.langston-black.com)

## Downtown Greer



Greer Station (downtown Greer) has entered into a new era that has seen over thirty new businesses open in the downtown area. With streetscape improvements, the opening of the new city hall complex, restoration efforts on many buildings, and numerous events and festivals being held during the year, Greer Station is again becoming a destination point. Visit the Greer Station web site at [www.greerstation.com](http://www.greerstation.com)