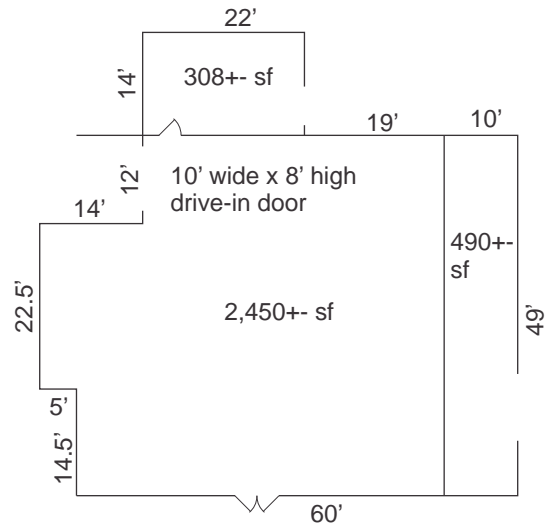


102 PARK AVENUE, DOWNTOWN GREER



JUST OFF HWY 101, BEHIND VICTOR PARK AND BASEBALL FIELD

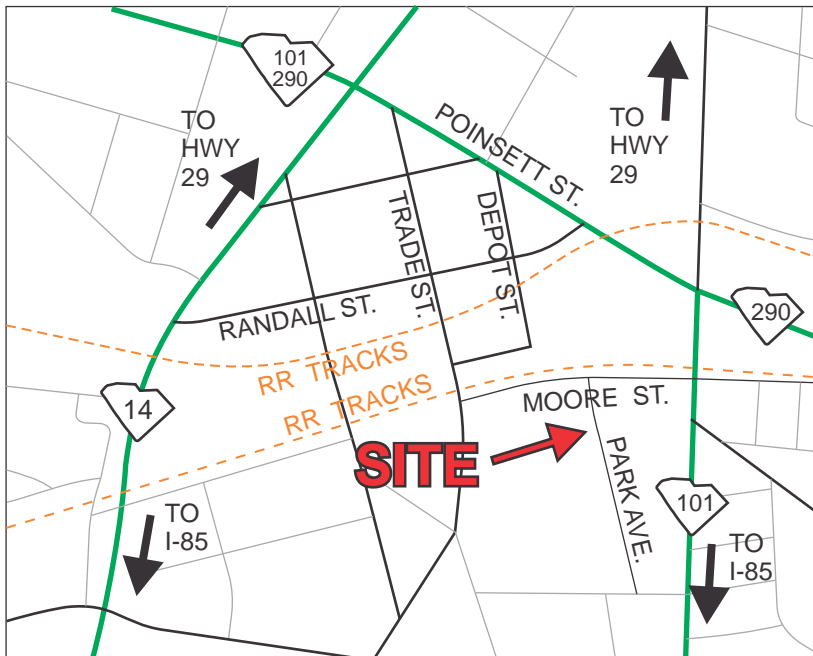
**2,450+- SF BUILDING ON
.7+- ACRE FENCED LOT**



TAX MAP G027.00-02-001.00 AND 002.00

LEASE RATE:
\$750/MONTH
SALE PRICE: \$225,000

ZONED CITY OF GREER C1



FOR MORE INFORMATION
CONTACT CHUCK LANGSTON
AT 230-4302
clangston@langston-black.com

LANGSTON BLACK
REAL ESTATE, INC.

P.O. BOX 2167
GREER, S.C. 29652
BUS: 864-848-9070

316

www.langston-black.com

Every effort has been made to ensure the accuracy of the enclosed data, but we assume no responsibility for errors. All conditions and pricing subject to change without notice.
(LANGSTON-BLACK SITE #316)

