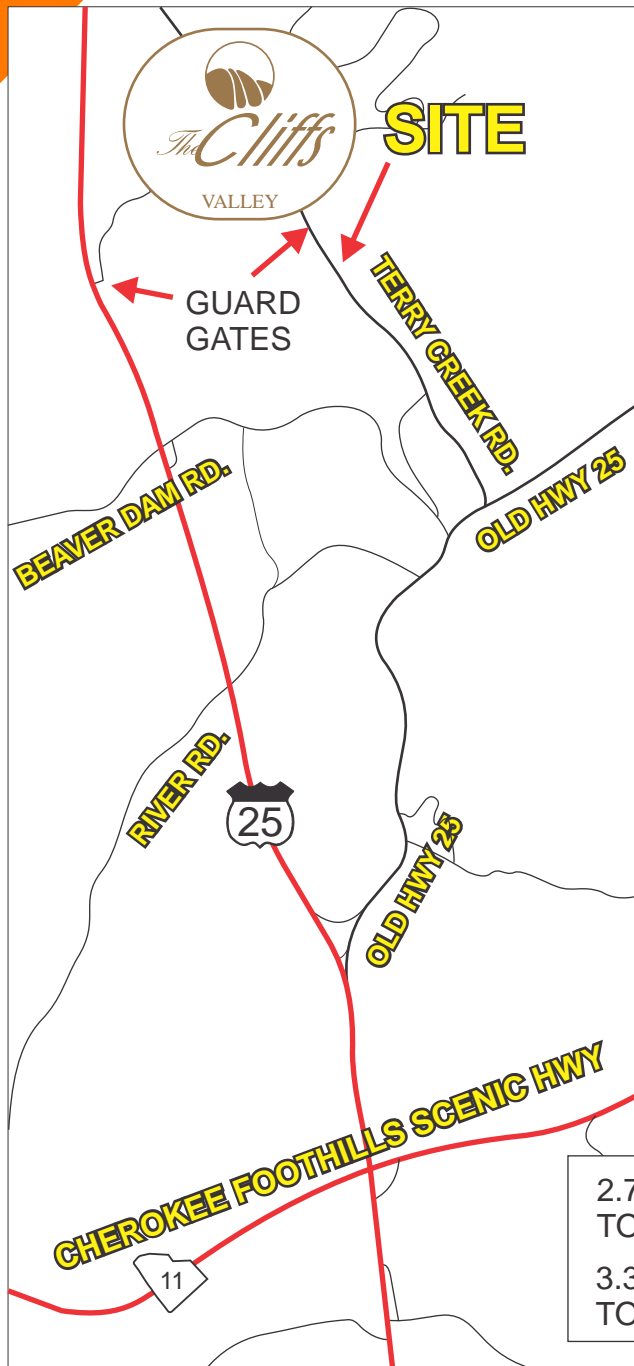


SIX LOTS FOR SALE

◆ BANK OWNED ◆

COUNTRY PLACE SUBDIVISION, TRAVELERS REST



LOCATED OUTSIDE THE REAR ENTRANCE
TO THE CLIFFS VALLEY.



13 LOT PRIVATE SUBDIVISION
WITH 7 EXISTING HOMES



CONDOMINIUM STYLE DEVELOPMENT

TAX MAP 0663.06-01-001.00, 007.00, 008.00,
009.00, 012.00 AND 013.00.

ALL SIX LOTS FOR ~~\$199,000~~
REDUCED TO **\$124,900**

FOR MORE INFORMATION CONTACT:

TIM ALLENDER AT 864-884-2198
tallender@langston-black.com

CHUCK LANGSTON AT 864-230-4302
clangston@langston-black.com

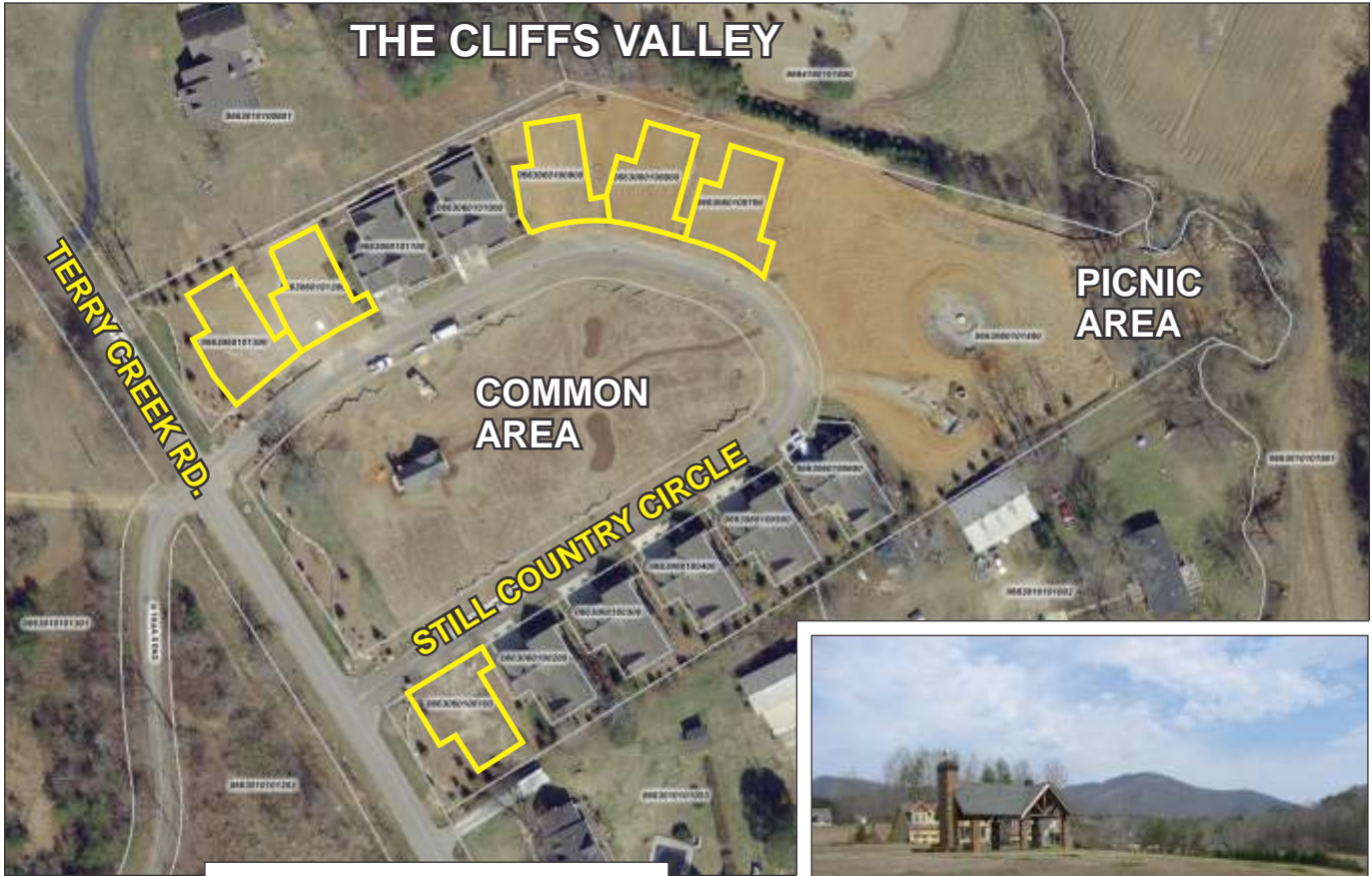
2.7+- MILES
TO HWY 25

3.3+- MILES
TO HWY 11

127

www.langston-black.com

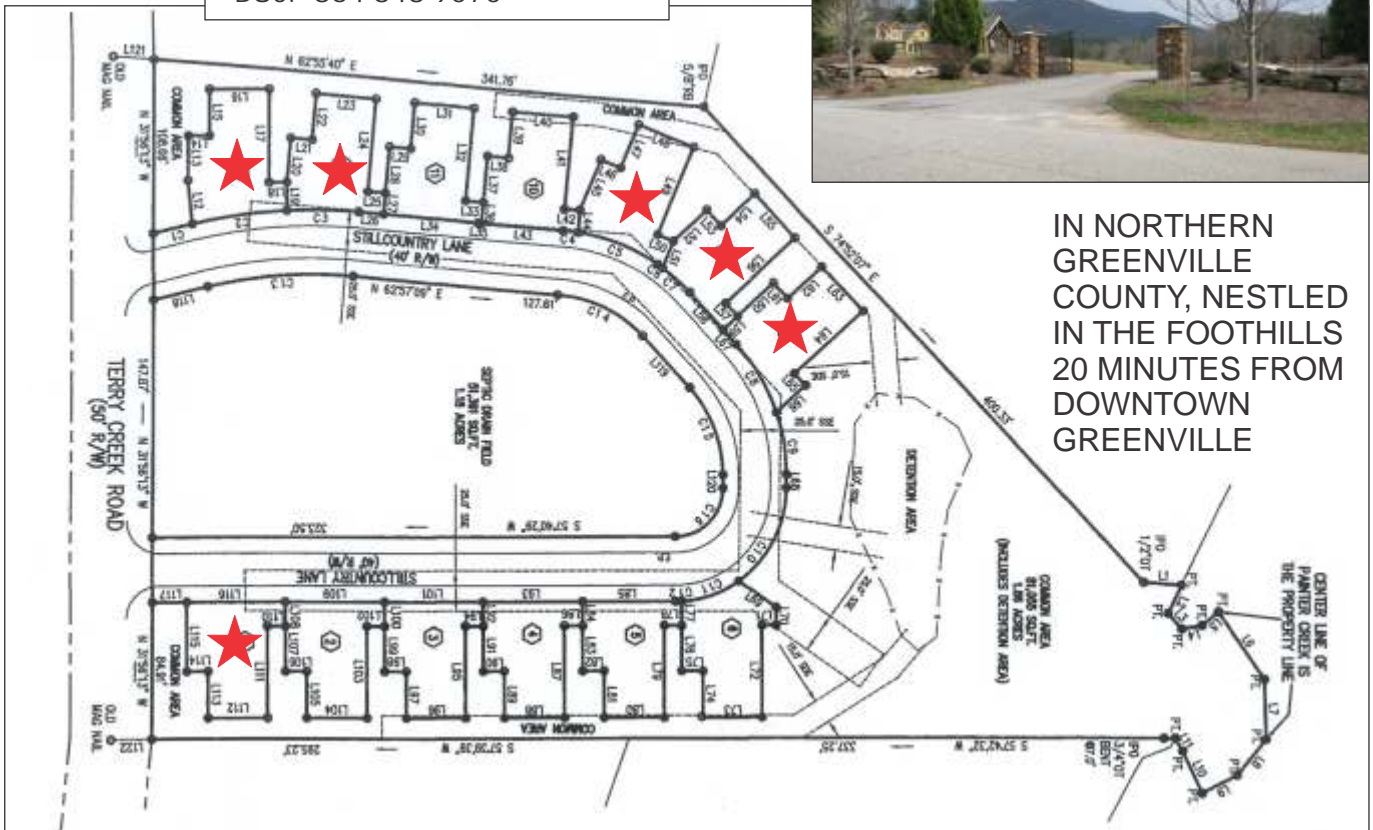
THE CLIFFS VALLEY



PROPERTY MARKETED BY:

Langston Black
REAL ESTATE, INC.

P.O. BOX 2167
GREER, S.C. 29652
BUS: 864-848-9070



IN NORTHERN GREENVILLE COUNTY, NESTLED IN THE FOOTHILLS 20 MINUTES FROM DOWNTOWN GREENVILLE