

LANGSTON BLACK

REAL ESTATE, INC.

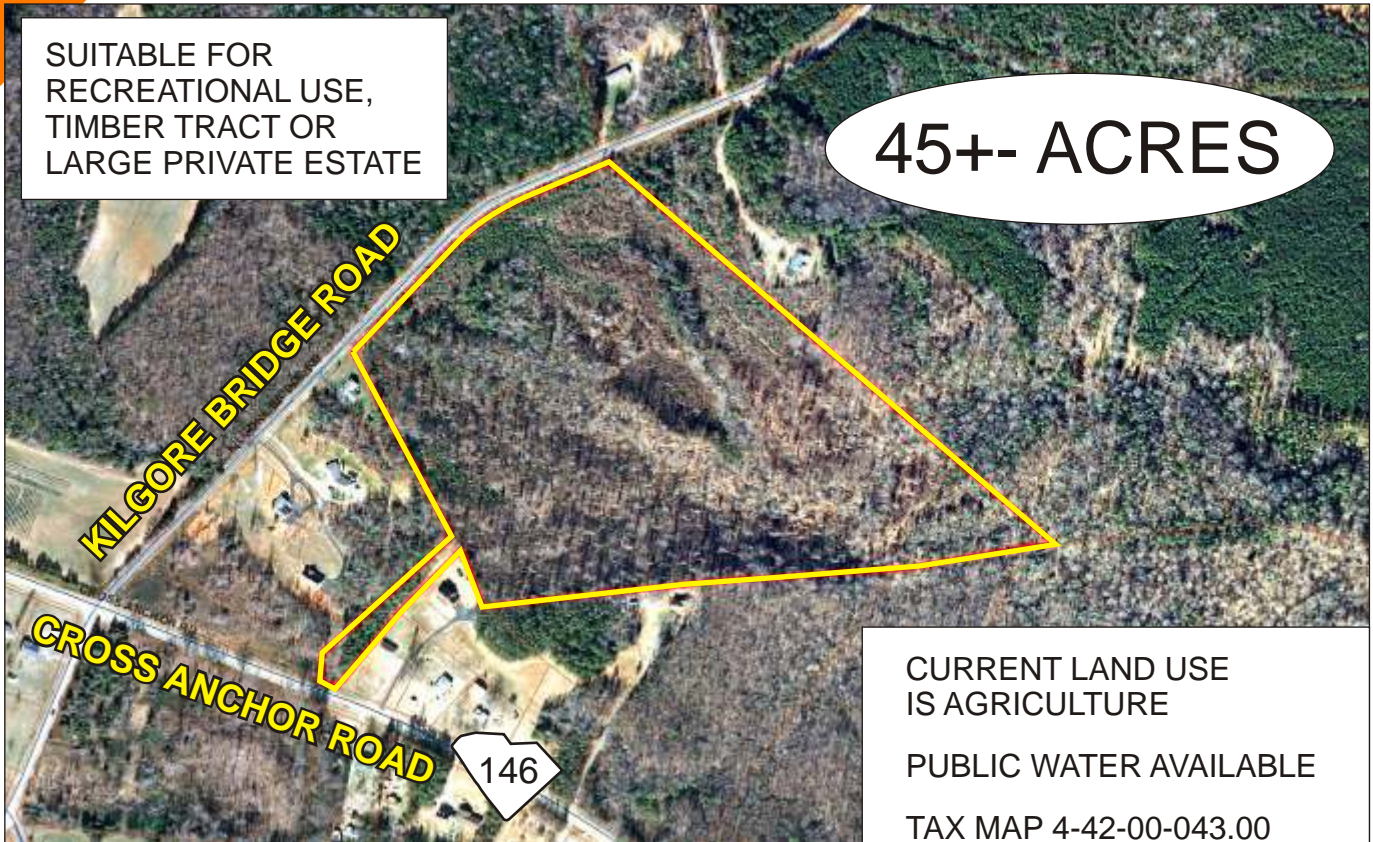
LAND FOR SALE

BETWEEN WOODRUFF AND I-26

HWY 146 AND KILGORE BRIDGE ROAD, WOODRUFF

SUITABLE FOR
RECREATIONAL USE,
TIMBER TRACT OR
LARGE PRIVATE ESTATE

45+- ACRES



CURRENT LAND USE
IS AGRICULTURE

PUBLIC WATER AVAILABLE

TAX MAP 4-42-00-043.00

\$5,400/ACRE

FOR MORE INFORMATION CONTACT

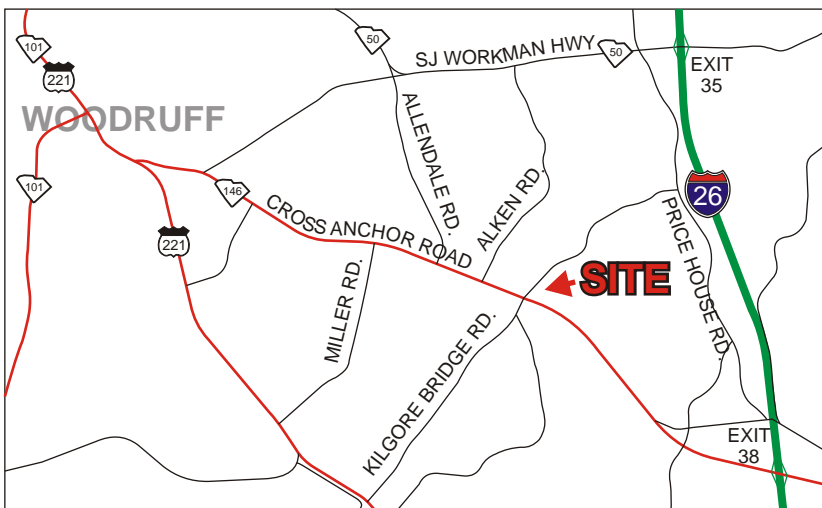
ROGER BARNES AT 915-4622
rbarnes@langston-black.com

CHUCK LANGSTON AT 230-4302
clangston@langston-black.com

LANGSTON BLACK
REAL ESTATE, INC.

P.O. BOX 2167
GREER, S.C. 29652
BUS: 864-848-9070

093



www.langston-black.com

Every effort has been made to ensure the accuracy of the enclosed data, but we assume no responsibility for errors. All conditions and pricing subject to change without notice.
(LANGSTON-BLACK SITE #093)

