

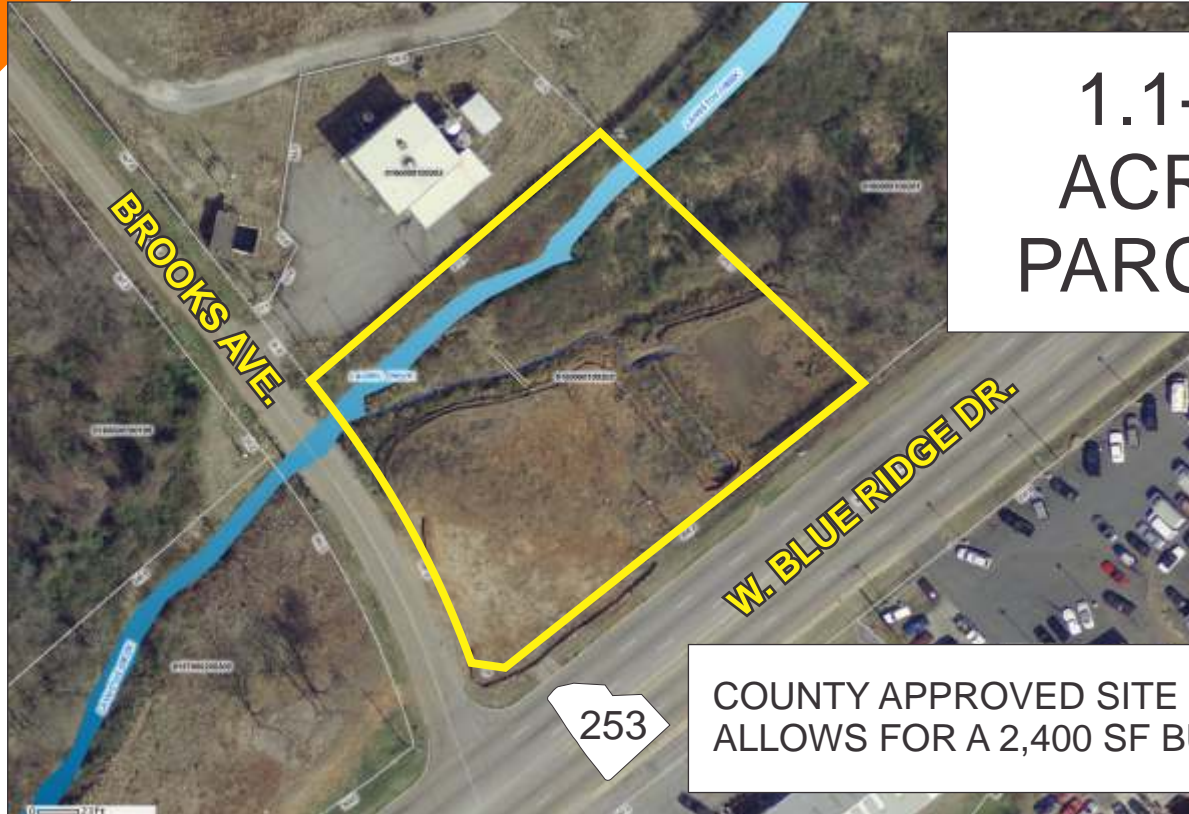
LANGSTON BLACK

REAL ESTATE, INC.

LAND FOR SALE

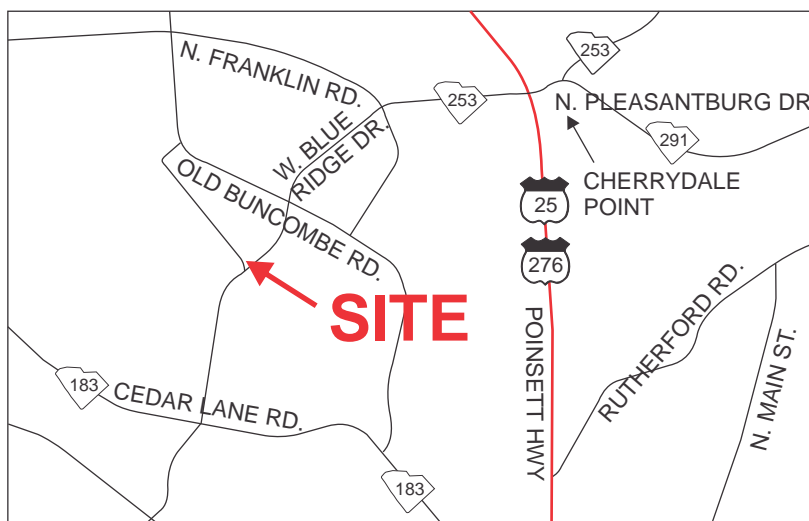
CORNER OF BROOKS AVE. AND W. BLUE RIDGE DR.

1300 WEST BLUE RIDGE DRIVE, (HWY 253) GREENVILLE



1.1+
ACRE
PARCEL

COUNTY APPROVED SITE PLAN
ALLOWS FOR A 2,400 SF BUILDING



TAX MAP 0160.00-01-002.03

SALES PRICE: ~~\$75,000~~
REDUCED TO \$69,000

FOR MORE INFORMATION CONTACT
MARK GRIFFIN AT 525-8562
mgriffin@langston-black.com

LANGSTON BLACK
REAL ESTATE, INC.

P.O. BOX 2167
GREER, S.C. 29652
BUS: 864-848-9070

89

www.langston-black.com

Every effort has been made to ensure the accuracy of the enclosed data, but we assume no responsibility for errors. All conditions and pricing subject to change without notice.
(LANGSTON-BLACK SITE #89)



ZONED GREENVILLE COUNTY C2 AND I1



- CLOSE TO CHERRYDALE SHOPPING
- ACROSS FROM BREAKERS C-STORE/ GAS STATION
- IN FRONT OF MILL SITE TO BE DEMOLISHED SPRING/SUMMER 2011
- GREAT INDUSTRIAL OR COMMERCIAL CORNER SITE

Artist rendering of one way the property might be developed. No governmental approval has been given for this layout.